

## Product datasheet

# Biotin Anti-Integrin beta 4 antibody [439-9B] ab95584

[2 References](#) [1 Image](#)

### Overview

|                            |                                                                                                                                                                                                                                                                                                                                                                                                                                                                                                                                                                                                                                                                                                                    |
|----------------------------|--------------------------------------------------------------------------------------------------------------------------------------------------------------------------------------------------------------------------------------------------------------------------------------------------------------------------------------------------------------------------------------------------------------------------------------------------------------------------------------------------------------------------------------------------------------------------------------------------------------------------------------------------------------------------------------------------------------------|
| <b>Product name</b>        | Biotin Anti-Integrin beta 4 antibody [439-9B]                                                                                                                                                                                                                                                                                                                                                                                                                                                                                                                                                                                                                                                                      |
| <b>Description</b>         | Biotin Rat monoclonal [439-9B] to Integrin beta 4                                                                                                                                                                                                                                                                                                                                                                                                                                                                                                                                                                                                                                                                  |
| <b>Host species</b>        | Rat                                                                                                                                                                                                                                                                                                                                                                                                                                                                                                                                                                                                                                                                                                                |
| <b>Conjugation</b>         | Biotin                                                                                                                                                                                                                                                                                                                                                                                                                                                                                                                                                                                                                                                                                                             |
| <b>Tested applications</b> | <b>Suitable for:</b> Flow Cyt                                                                                                                                                                                                                                                                                                                                                                                                                                                                                                                                                                                                                                                                                      |
| <b>Species reactivity</b>  | <b>Reacts with:</b> Human                                                                                                                                                                                                                                                                                                                                                                                                                                                                                                                                                                                                                                                                                          |
| <b>Immunogen</b>           | Full length protein corresponding to Human Integrin beta 4. Native protein<br>Database link: <a href="#">P16144</a>                                                                                                                                                                                                                                                                                                                                                                                                                                                                                                                                                                                                |
| <b>Positive control</b>    | Flow Cyt: EDTA treated A549 cell line.                                                                                                                                                                                                                                                                                                                                                                                                                                                                                                                                                                                                                                                                             |
| <b>General notes</b>       | <p>ab95584 has been reported to have no effect on adhesion of Human colon adenocarcinoma cells</p> <p>The Life Science industry has been in the grips of a reproducibility crisis for a number of years. Abcam is leading the way in addressing this with our range of recombinant monoclonal antibodies and knockout edited cell lines for gold-standard validation. Please check that this product meets your needs before purchasing.</p> <p>If you have any questions, special requirements or concerns, please send us an inquiry and/or contact our Support team ahead of purchase. Recommended alternatives for this product can be found below, along with publications, customer reviews and Q&amp;As</p> |

### Properties

|                               |                                                                                                           |
|-------------------------------|-----------------------------------------------------------------------------------------------------------|
| <b>Form</b>                   | Liquid                                                                                                    |
| <b>Storage instructions</b>   | Shipped at 4°C. Store at +4°C short term (1-2 weeks). Store at -20°C or -80°C. Avoid freeze / thaw cycle. |
| <b>Storage buffer</b>         | pH: 7.20<br>Preservative: 0.09% Sodium azide<br>Constituent: PBS                                          |
| <b>Purity</b>                 | Protein G purified                                                                                        |
| <b>Primary antibody notes</b> | ab95584 has been reported to have no effect on adhesion of Human colon adenocarcinoma cells               |
| <b>Clonality</b>              | Monoclonal                                                                                                |

|              |        |
|--------------|--------|
| Clone number | 439-9B |
| Isotype      | IgG2b  |

## Applications

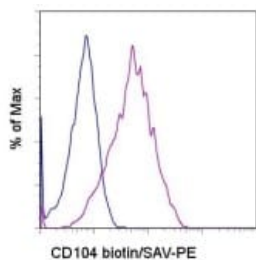
**The Abpromise guarantee** Our **Abpromise guarantee** covers the use of ab95584 in the following tested applications. The application notes include recommended starting dilutions; optimal dilutions/concentrations should be determined by the end user.

| Application | Abreviews | Notes                                                                                                                                           |
|-------------|-----------|-------------------------------------------------------------------------------------------------------------------------------------------------|
| Flow Cyt    |           | Use 0.25µg for 10 <sup>5-8</sup> cells.<br><b>ab18542</b> - Rat monoclonal IgG2b, is suitable for use as an isotype control with this antibody. |

## Target

|                               |                                                                                                                                                                                                                                                                                                                                                                                                                                                                                                                                                                                                                                                                                                                                                                                                                                                                                                                                                                             |
|-------------------------------|-----------------------------------------------------------------------------------------------------------------------------------------------------------------------------------------------------------------------------------------------------------------------------------------------------------------------------------------------------------------------------------------------------------------------------------------------------------------------------------------------------------------------------------------------------------------------------------------------------------------------------------------------------------------------------------------------------------------------------------------------------------------------------------------------------------------------------------------------------------------------------------------------------------------------------------------------------------------------------|
| <b>Function</b>               | Integrin alpha-6/beta-4 is a receptor for laminin. It plays a critical structural role in the hemidesmosome of epithelial cells.                                                                                                                                                                                                                                                                                                                                                                                                                                                                                                                                                                                                                                                                                                                                                                                                                                            |
| <b>Tissue specificity</b>     | Integrin alpha-6/beta-4 is predominantly expressed by epithelia. Isoform beta-4D is also expressed in colon and placenta. Isoform beta-4E is also expressed in epidermis, lung, duodenum, heart, spleen and stomach.                                                                                                                                                                                                                                                                                                                                                                                                                                                                                                                                                                                                                                                                                                                                                        |
| <b>Involvement in disease</b> | Defects in ITGB4 are a cause of epidermolysis bullosa letalis with pyloric atresia (EB-PA) [MIM:226730]; also known as junctional epidermolysis bullosa with pyloric atresia (PA-JEB) or aplasia cutis congenita with gastrointestinal atresia. EB-PA is an autosomal recessive, frequently lethal, epidermolysis bullosa with variable involvement of skin, nails, mucosa, and with variable effects on the digestive system. It is characterized by mucocutaneous fragility, aplasia cutis congenita, and gastrointestinal atresia, which most commonly affects the pylorus. Pyloric atresia is a primary manifestation rather than a scarring process secondary to epidermolysis bullosa. Defects in ITGB4 are a cause of generalized atrophic benign epidermolysis bullosa (GABEB) [MIM:226650]. GABEB is a non-lethal, adult form of junctional epidermolysis bullosa characterized by life-long blistering of the skin, associated with hair and tooth abnormalities. |
| <b>Sequence similarities</b>  | Belongs to the integrin beta chain family.<br>Contains 1 Calx-beta domain.<br>Contains 4 fibronectin type-III domains.<br>Contains 1 PSI domain.<br>Contains 1 VWFA domain.                                                                                                                                                                                                                                                                                                                                                                                                                                                                                                                                                                                                                                                                                                                                                                                                 |
| <b>Domain</b>                 | The fibronectin type-III-like domains bind BPAG1 and plectin and probably also recruit BP230.                                                                                                                                                                                                                                                                                                                                                                                                                                                                                                                                                                                                                                                                                                                                                                                                                                                                               |
| <b>Cellular localization</b>  | Membrane.                                                                                                                                                                                                                                                                                                                                                                                                                                                                                                                                                                                                                                                                                                                                                                                                                                                                                                                                                                   |

## Images



Flow Cytometry - Biotin Anti-Integrin beta 4 antibody  
[439-9B] (ab95584)

Staining of the A549 cell line with 0.125 µg of Rat IgG2b ? Isotype Control Biotin (open histogram) or 0.125 µg of ab95584 (filled histogram) followed by Streptavidin PE. Total viable cells were used for analysis.

**Please note:** All products are "FOR RESEARCH USE ONLY. NOT FOR USE IN DIAGNOSTIC PROCEDURES"

### Our Abpromise to you: Quality guaranteed and expert technical support

- Replacement or refund for products not performing as stated on the datasheet
- Valid for 12 months from date of delivery
- Response to your inquiry within 24 hours
- We provide support in Chinese, English, French, German, Japanese and Spanish
- Extensive multi-media technical resources to help you
- We investigate all quality concerns to ensure our products perform to the highest standards

If the product does not perform as described on this datasheet, we will offer a refund or replacement. For full details of the Abpromise, please visit <https://www.abcam.com/abpromise> or contact our technical team.

### Terms and conditions

- Guarantee only valid for products bought direct from Abcam or one of our authorized distributors