

Product datasheet

Biotin Anti-IP10 antibody ab271283

[2 Images](#)

Overview

Product name	Biotin Anti-IP10 antibody
Description	Biotin Rabbit polyclonal to IP10
Host species	Rabbit
Conjugation	Biotin
Tested applications	Suitable for: WB, ELISA
Species reactivity	Reacts with: Recombinant fragment
Immunogen	Recombinant full length protein corresponding to Human IP10 aa 1 to the C-terminus. Mature chain. E. coli derived. Database link: P02778 Run BLAST with Run BLAST with
Positive control	WB: Recombinant human IP10.
General notes	<p>The Life Science industry has been in the grips of a reproducibility crisis for a number of years. Abcam is leading the way in addressing this with our range of recombinant monoclonal antibodies and knockout edited cell lines for gold-standard validation. Please check that this product meets your needs before purchasing.</p> <p>If you have any questions, special requirements or concerns, please send us an inquiry and/or contact our Support team ahead of purchase. Recommended alternatives for this product can be found below, along with publications, customer reviews and Q&As</p>

Properties

Form	Lyophilized:Reconstitute in sterile PBS with 0.1% BSA to 0.1 - 1.0 mg/ml.
Storage instructions	Shipped at 4°C. Store at +4°C short term (1-2 weeks). Upon delivery aliquot. Store at -20°C long term. Avoid freeze / thaw cycle. Store In the Dark.
Storage buffer	Constituents: PBS, 0.1% BSA
Purity	Affinity purified
Clonality	Polyclonal
Isotype	IgG

Applications

The Abpromise guarantee

Our **Abpromise guarantee** covers the use of ab271283 in the following tested applications.

The application notes include recommended starting dilutions; optimal dilutions/concentrations should be determined by the end user.

Application	Abreviews	Notes
WB		Use a concentration of 0.1 - 0.2 µg/ml. Predicted molecular weight: 10 kDa. Used in conjunction with compatible secondary reagents the detection limit for recombinant hIP-10 is 1.5 - 3.0 ng/lane, under either reducing or non-reducing conditions.
ELISA		Use a concentration of 0.25 - 1 µg/ml. Human IP10 was detected by sandwich ELISA (using 100µl/well) using a concentration of 0.25-1.0 µg/ml of ab271283. This antibody in conjunction with an appropriate capture antibody, allows the detection of at least 0.2 – 0.4 ng/well of recombinant hIP10 protein.

Target

Function

Chemotactic for monocytes and T-lymphocytes. Binds to CXCR3.

Sequence similarities

Belongs to the intercrine alpha (chemokine CxC) family.

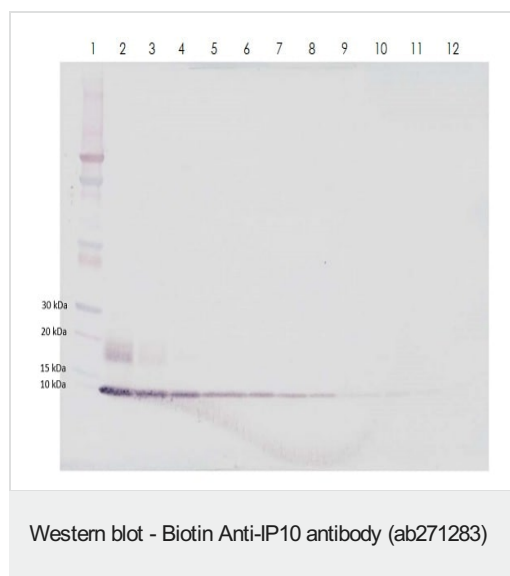
Post-translational modifications

CXCL10(1-73) is produced by proteolytic cleavage after secretion from keratinocytes.

Cellular localization

Secreted.

Images



Lane 1: Marker.

Lane 2: Recombinant hIP10 at 250ng/lane.

Lane 3: Recombinant hIP10 at 125ng/lane.

Lane 4: Recombinant hIP10 at 62.5ng/lane.

Lane 5: Recombinant hIP10 at 31.25ng/lane.

Lane 6: Recombinant hIP10 at 15.625ng/lane.

Lane 7: Recombinant hIP10 at 7.8ng/lane.

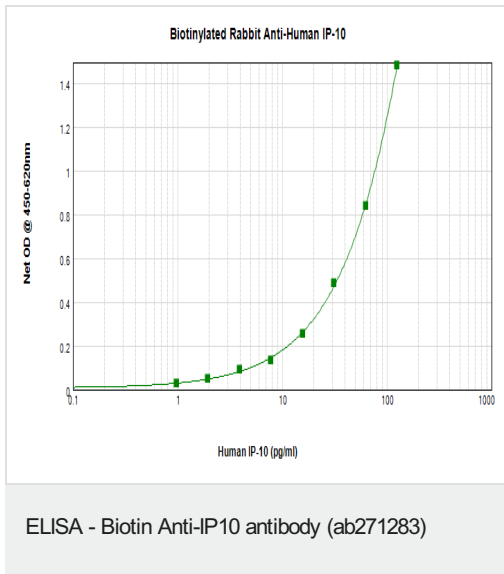
Lane 8: Recombinant hIP10 at 3.9ng/lane.

Lane 9: Recombinant hIP10 at 1.95ng/lane.

Lane 10: Recombinant hIP10 at 0.975ng/lane.

Lane 11: Recombinant hIP10 at 0.4875ng/lane.

Lane 12: Recombinant hIP10 at 0.24ng/lane.



Human IP10 was detected by sandwich ELISA (using 100 µl/well) using a concentration of 0.25-1.0 µg/ml of ab271283. This antibody in conjunction with an appropriate capture antibody, allows the detection of at least 0.2 - 0.4 ng/well of recombinant IP10 protein.

Please note: All products are "FOR RESEARCH USE ONLY. NOT FOR USE IN DIAGNOSTIC PROCEDURES"

Our Abpromise to you: Quality guaranteed and expert technical support

- Replacement or refund for products not performing as stated on the datasheet
- Valid for 12 months from date of delivery
- Response to your inquiry within 24 hours
- We provide support in Chinese, English, French, German, Japanese and Spanish
- Extensive multi-media technical resources to help you
- We investigate all quality concerns to ensure our products perform to the highest standards

If the product does not perform as described on this datasheet, we will offer a refund or replacement. For full details of the Abpromise, please visit <https://www.abcam.com/abpromise> or contact our technical team.

Terms and conditions

- Guarantee only valid for products bought direct from Abcam or one of our authorized distributors