

Product datasheet

Biotin Anti-IRE1 (phospho S724) antibody ab81936

★★★★★ [1 Abreviews](#) [1 References](#) [1 Image](#)

Overview

Product name	Biotin Anti-IRE1 (phospho S724) antibody
Description	Biotin Rabbit polyclonal to IRE1 (phospho S724)
Host species	Rabbit
Conjugation	Biotin
Tested applications	Suitable for: IHC-P
Species reactivity	Reacts with: Mouse, Rat, Human Does not react with: Monkey
Immunogen	Synthetic peptide corresponding to Human IRE1 (phospho S724).
Positive control	Glucose treated pancreatic islets and endogenous protein of pancreatic beta cells and insuli. COS-7 expressing wild-type IRE1. Min6 cells treated with glucose.
General notes	<p>The Life Science industry has been in the grips of a reproducibility crisis for a number of years. Abcam is leading the way in addressing this with our range of recombinant monoclonal antibodies and knockout edited cell lines for gold-standard validation. Please check that this product meets your needs before purchasing.</p> <p>If you have any questions, special requirements or concerns, please send us an inquiry and/or contact our Support team ahead of purchase. Recommended alternatives for this product can be found below, along with publications, customer reviews and Q&As</p>

Properties

Form	Liquid
Storage instructions	Shipped at 4°C. Store at +4°C short term (1-2 weeks). Store at -20°C or -80°C. Avoid freeze / thaw cycle.
Storage buffer	Constituents: 30% Glycerol, PBS
Purity	Immunogen affinity purified
Clonality	Polyclonal
Isotype	IgG

Applications

The Abpromise guarantee

Our **Abpromise guarantee** covers the use of ab81936 in the following tested applications.

The application notes include recommended starting dilutions; optimal dilutions/concentrations should be determined by the end user.

Application	Abreviews	Notes
IHC-P		1/300.

Target

Function

Senses unfolded proteins in the lumen of the endoplasmic reticulum via its N-terminal domain which leads to enzyme auto-activation. The active endoribonuclease domain splices XBP1 mRNA to generate a new C-terminus, converting it into a potent unfolded-protein response transcriptional activator and triggering growth arrest and apoptosis.

Tissue specificity

Ubiquitously expressed. High levels observed in pancreatic tissue.

Sequence similarities

Belongs to the protein kinase superfamily. Ser/Thr protein kinase family.
Contains 1 KEN domain.
Contains 1 protein kinase domain.

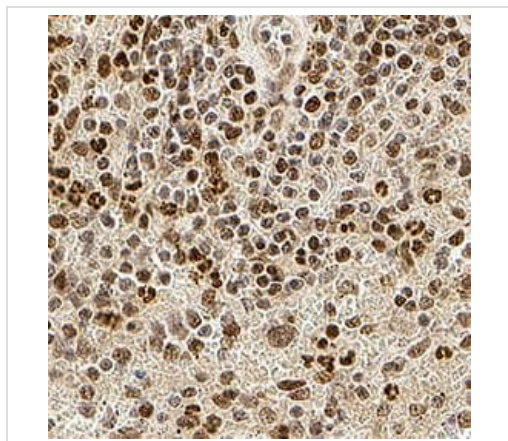
Post-translational modifications

Autophosphorylated.

Cellular localization

Endoplasmic reticulum membrane.

Images



Immunohistochemistry (Formalin/PFA-fixed paraffin-embedded sections) analysis of human spleen tissue labelling IRE1 with the unconjugated version of at81936 at 1/300 dilution.

Immunohistochemistry (Formalin/PFA-fixed paraffin-embedded sections) - Biotin Anti-IRE1 (phospho S724) antibody (ab81936)

Please note: All products are "FOR RESEARCH USE ONLY. NOT FOR USE IN DIAGNOSTIC PROCEDURES"

Our Abpromise to you: Quality guaranteed and expert technical support

- Replacement or refund for products not performing as stated on the datasheet

- Valid for 12 months from date of delivery
- Response to your inquiry within 24 hours

- We provide support in Chinese, English, French, German, Japanese and Spanish
- Extensive multi-media technical resources to help you
- We investigate all quality concerns to ensure our products perform to the highest standards

If the product does not perform as described on this datasheet, we will offer a refund or replacement. For full details of the Abpromise, please visit <https://www.abcam.com/abpromise> or contact our technical team.

Terms and conditions

- Guarantee only valid for products bought direct from Abcam or one of our authorized distributors