

### Biotin Anti-M13 antibody [E1] ab17269

[1 Image](#)

#### Overview

---

<b>Product name</b>	Biotin Anti-M13 antibody [E1]
<b>Description</b>	Biotin Mouse monoclonal [E1] to M13
<b>Host species</b>	Mouse
<b>Conjugation</b>	Biotin
<b>Specificity</b>	M13 antibody [E1] (ab17269) is specific for gp3 protein.
<b>Tested applications</b>	<b>Suitable for:</b> WB, ELISA, Flow Cyt, IHC
<b>Species reactivity</b>	<b>Reacts with:</b> Enterobacteria phage M13
<b>Immunogen</b>	Full length M13 phage coat protein; Exact epitope not determined.
<b>General notes</b>	<p>M13 antibody [E1] (ab17269) has numerous uses in screening phage display libraries, especially the screening of single chain antibody libraries.</p> <p>The Life Science industry has been in the grips of a reproducibility crisis for a number of years. Abcam is leading the way in addressing this with our range of recombinant monoclonal antibodies and knockout edited cell lines for gold-standard validation. Please check that this product meets your needs before purchasing.</p> <p>If you have any questions, special requirements or concerns, please send us an inquiry and/or contact our Support team ahead of purchase. Recommended alternatives for this product can be found below, along with publications, customer reviews and Q&amp;As</p>

#### Properties

---

<b>Form</b>	Liquid
<b>Storage instructions</b>	Shipped at 4°C. Upon delivery aliquot. Store at -20°C. Avoid freeze / thaw cycle.
<b>Storage buffer</b>	Preservative: 0.08% Sodium azide Constituent: PBS
<b>Purity</b>	Protein A purified
<b>Purification notes</b>	M13 antibody [E1] (ab17269) is purified using 0.2µm sterile filter.
<b>Primary antibody notes</b>	M13 antibody [E1] (ab17269) has numerous uses in screening phage display libraries, especially the screening of single chain antibody libraries.
<b>Clonality</b>	Monoclonal
<b>Clone number</b>	E1

<b>Myeloma</b>	unknown
<b>Isotype</b>	IgG3
<b>Light chain type</b>	unknown

## Applications

**The Abpromise guarantee** Our **Abpromise guarantee** covers the use of ab17269 in the following tested applications.

The application notes include recommended starting dilutions; optimal dilutions/concentrations should be determined by the end user.

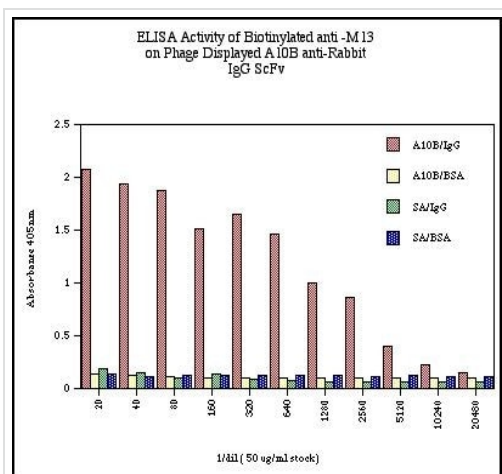
Application	Abreviews	Notes
<b>WB</b>		Use a concentration of 1 - 5 µg/ml. Detects a band of approximately 90 kDa.
<b>ELISA</b>		Use at an assay dependent concentration.
<b>Flow Cyt</b>		Use 1 µg for 10 <sup>6</sup> cells. <b>ab97679</b> - Mouse monoclonal IgG2a, is suitable for use as an isotype control with this antibody.
<b>IHC</b>		Use at an assay dependent concentration.

## Target

### Relevance

The bacteriophage known as "M13" forms the basis of cloning systems designed to easily introduce mutations into genes inserted into the phage genome. It also has been used in various "phage display" methodologies and combinatorial DNA and peptide libraries. Coat protein A (G3P) is necessary for adsorption of the virion onto the F-pilus of the host cell. There are about five copies of this protein per mature phage. Consists of three domains (N1, N2, and CT). The N2 domain interacts with the F pilus, whereas the N1 domain (connected to N2 by a flexible glycine-rich linker and tightly interacting with it on the phage) forms a complex with the C-terminal domain of tolA at later stages of the infection process. They are located at the adsorption end of the phage particle.

## Images



ELISA - Biotin Anti-M13 antibody [E1] (ab17269)

ELISA absorbancy readings for A10B phage on rabbit IgG (A10B/IgG), A10B phage on BSA (A10B/BSA), streptavidin on rabbit IgG (SA/IgG) and streptavidin on BSA (SA/BSA) for each dilution of ab17269.

**Please note:** All products are "FOR RESEARCH USE ONLY. NOT FOR USE IN DIAGNOSTIC PROCEDURES"

**Our Abpromise to you: Quality guaranteed and expert technical support**

- Replacement or refund for products not performing as stated on the datasheet
- Valid for 12 months from date of delivery
- Response to your inquiry within 24 hours
- We provide support in Chinese, English, French, German, Japanese and Spanish
- Extensive multi-media technical resources to help you
- We investigate all quality concerns to ensure our products perform to the highest standards

If the product does not perform as described on this datasheet, we will offer a refund or replacement. For full details of the Abpromise, please visit <https://www.abcam.com/abpromise> or contact our technical team.

**Terms and conditions**

- Guarantee only valid for products bought direct from Abcam or one of our authorized distributors