

Product datasheet

Biotin Anti-Macrophage Inflammatory Protein 1 alpha / CCL3 antibody ab83139

[2 Images](#)

Overview

Product name	Biotin Anti-Macrophage Inflammatory Protein 1 alpha / CCL3 antibody
Description	Biotin Rabbit polyclonal to MIP-1 alpha/CCL3
Host species	Rabbit
Conjugation	Biotin
Tested applications	Suitable for: Sandwich ELISA, WB
Species reactivity	Reacts with: Mouse
Immunogen	Recombinant full length protein corresponding to Mouse MIP-1 alpha/CCL3.
General notes	<p>The Life Science industry has been in the grips of a reproducibility crisis for a number of years. Abcam is leading the way in addressing this with our range of recombinant monoclonal antibodies and knockout edited cell lines for gold-standard validation. Please check that this product meets your needs before purchasing.</p> <p>If you have any questions, special requirements or concerns, please send us an inquiry and/or contact our Support team ahead of purchase. Recommended alternatives for this product can be found below, along with publications, customer reviews and Q&As</p>

Properties

Form	Lyophilized:Centrifuge vial prior to opening. Reconstitute in sterile PBS containing 0.1% BSA to a concentration of 0.1-1.0 mg/ml.
Storage instructions	Shipped at 4°C. Store at +4°C short term (1-2 weeks). Store at -20°C or -80°C. Avoid freeze / thaw cycle.
Storage buffer	Constituent: PBS
Purity	Protein A purified
Purification notes	ab83139 is sterile filtered.
Clonality	Polyclonal
Isotype	IgG

Applications

The Abpromise guarantee

Our **Abpromise guarantee** covers the use of ab83139 in the following tested applications.

The application notes include recommended starting dilutions; optimal dilutions/concentrations should be determined by the end user.

Application	Abreviews	Notes
Sandwich ELISA		Use a concentration of 0.25 - 1 µg/ml. Allows the detection of at least 0.2 - 0.4 ng/well of recombinant murine Macrophage Inflammatory Protein 1 alpha / CCL3.
WB		Use a concentration of 0.1 - 0.2 µg/ml. Predicted molecular weight: 10 kDa. The detection limit for recombinant murine Inflammatory Protein 1 alpha / CCL3 is 1.5 - 3.0 ng/lane, under either reducing or non-reducing conditions.

Target

Function

Monokine with inflammatory and chemokinetic properties. Binds to CCR1, CCR4 and CCR5. One of the major HIV-suppressive factors produced by CD8+ T-cells. Recombinant MIP-1-alpha induces a dose-dependent inhibition of different strains of HIV-1, HIV-2, and simian immunodeficiency virus (SIV).

Sequence similarities

Belongs to the intercrine beta (chemokine CC) family.

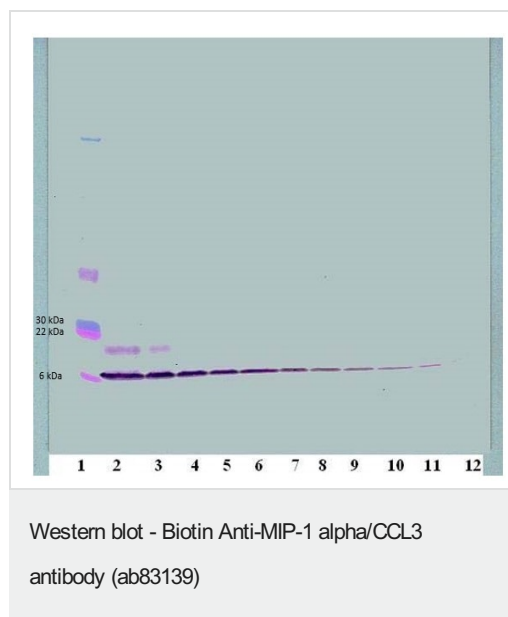
Post-translational modifications

N-terminal processed form LD78-alpha(4-69) is produced by proteolytic cleavage after secretion from HTLV1-transformed T-cells.

Cellular localization

Secreted.

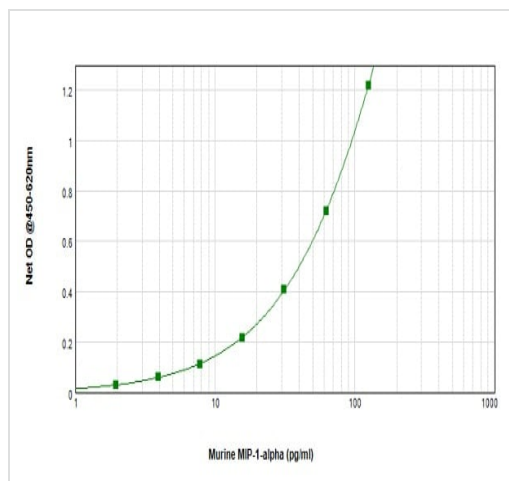
Images



To detect murine Macrophage Inflammatory Protein 1 alpha / CCL3 by Western Blot analysis ab83139 can be used at a concentration of 0.1 - 0.2 µg/ml. When used in conjunction with compatible secondary reagents, the detection limit for recombinant murine Macrophage Inflammatory Protein 1 alpha / CCL3 is 1.5 - 3.0 ng/lane, under either reducing or non-reducing conditions.

Image shown is non-reducing conditions; Murine recombinant Macrophage Inflammatory Protein 1 alpha / CCL3 protein at 250 - 0.24 ng/ml.

Lane 1 is MW marker, lanes 2-12 murine recombinant Macrophage Inflammatory Protein 1 alpha / CCL3 protein.



Sandwich ELISA - Biotin Anti-MIP-1 alpha/CCL3 antibody (ab83139)

To detect murine Macrophage Inflammatory Protein 1 alpha / CCL3 by sandwich ELISA (using 100 µl/well antibody solution) a concentration of 0.25 – 1.0 µg/ml of ab83139 is required. This biotinylated polyclonal antibody, in conjunction with an anti-Macrophage Inflammatory Protein 1 alpha / CCL3 ([ab9927](#)) as a capture antibody, allows the detection of at least 0.2 – 0.4 ng/well of recombinant murine Macrophage Inflammatory Protein 1 alpha / CCL3.

Please note: All products are "FOR RESEARCH USE ONLY. NOT FOR USE IN DIAGNOSTIC PROCEDURES"

Our Abpromise to you: Quality guaranteed and expert technical support

- Replacement or refund for products not performing as stated on the datasheet
- Valid for 12 months from date of delivery
- Response to your inquiry within 24 hours
- We provide support in Chinese, English, French, German, Japanese and Spanish
- Extensive multi-media technical resources to help you
- We investigate all quality concerns to ensure our products perform to the highest standards

If the product does not perform as described on this datasheet, we will offer a refund or replacement. For full details of the Abpromise, please visit <https://www.abcam.com/abpromise> or contact our technical team.

Terms and conditions

- Guarantee only valid for products bought direct from Abcam or one of our authorized distributors