



Product datasheet

Biotin Anti-NGF antibody ab271277

[2 Images](#)

Overview

Product name	Biotin Anti-NGF antibody
Description	Biotin Rabbit polyclonal to NGF
Host species	Rabbit
Conjugation	Biotin
Tested applications	Suitable for: WB, ELISA
Species reactivity	Reacts with: Recombinant fragment
Immunogen	Recombinant full length protein corresponding to Human NGF aa 100 to the C-terminus. Mature chain. E. coli derived. Database link: P01138
	<div>  Run BLAST with </div> <div>  Run BLAST with </div>
Positive control	WB: Recombinant human NGF.
General notes	<p>The Life Science industry has been in the grips of a reproducibility crisis for a number of years. Abcam is leading the way in addressing this with our range of recombinant monoclonal antibodies and knockout edited cell lines for gold-standard validation. Please check that this product meets your needs before purchasing.</p> <p>If you have any questions, special requirements or concerns, please send us an inquiry and/or contact our Support team ahead of purchase. Recommended alternatives for this product can be found below, along with publications, customer reviews and Q&As</p>

Properties

Form	Lyophilized:Reconstitute in sterile PBS with 0.1% BSA to 0.1 - 1.0 mg/ml.
Storage instructions	Shipped at 4°C. Store at +4°C short term (1-2 weeks). Upon delivery aliquot. Store at -20°C long term. Avoid freeze / thaw cycle. Store In the Dark.
Storage buffer	Constituents: PBS, 0.1% BSA
Purity	Affinity purified
Clonality	Polyclonal
Isotype	IgG

Applications

The Abpromise guarantee

Our **Abpromise guarantee** covers the use of ab271277 in the following tested applications.

The application notes include recommended starting dilutions; optimal dilutions/concentrations should be determined by the end user.

Application	Abreviews	Notes
WB		Use a concentration of 0.1 - 0.2 µg/ml. Predicted molecular weight: 26 kDa. When used in conjunction with compatible secondary reagents, the detection limit for recombinant human NGF is 1.5 - 3.0 ng/lane, under either reducing or non-reducing conditions.
ELISA		Use a concentration of 0.25 - 1 µg/ml. Human NGF was detected by sandwich ELISA (using 100µl/well) using a concentration of 0.25-1.0 µg/ml of ab271277. This antibody in conjunction with an appropriate capture antibody, allows the detection of at least 0.2 – 0.4 ng/well of recombinant NGF protein.

Target

Function

Nerve growth factor is important for the development and maintenance of the sympathetic and sensory nervous systems. Extracellular ligand for the NTRK1 and NGFR receptors, activates cellular signaling cascades through those receptor tyrosine kinase to regulate neuronal proliferation, differentiation and survival. Inhibits metalloproteinase dependent proteolysis of platelet glycoprotein VI (PubMed:20164177).

Involvement in disease

Neuropathy, hereditary sensory and autonomic, 5

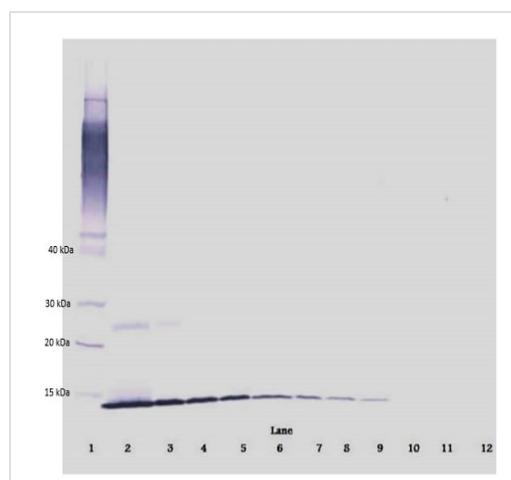
Sequence similarities

Belongs to the NGF-beta family.

Cellular localization

Secreted.

Images



Western blot - Biotin Anti-NGF antibody (ab271277)

Lane 1: Marker.

Lane 2: Recombinant hNGF at 250ng/lane.

Lane 3: Recombinant hNGF at 125ng/lane.

Lane 4: Recombinant hNGF at 62.5ng/lane.

Lane 5: Recombinant hNGF at 31.25ng/lane.

Lane 6: Recombinant hNGF at 15.625ng/lane.

Lane 7: Recombinant hNGF at 7.8ng/lane.

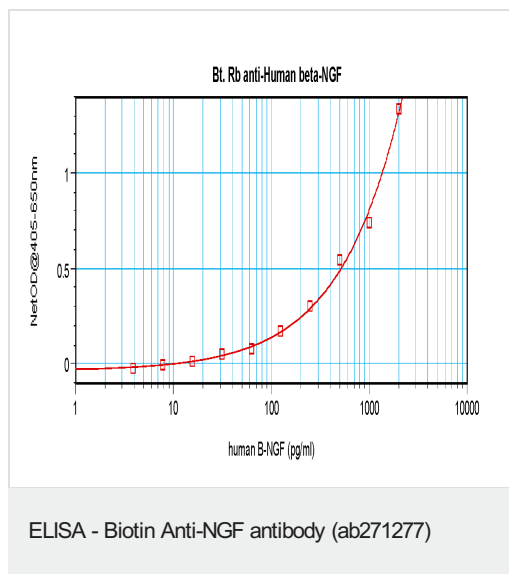
Lane 8: Recombinant hNGF at 3.9ng/lane.

Lane 9: Recombinant hNGF at 1.95ng/lane.

Lane 10: Recombinant hNGF at 0.975ng/lane.

Lane 11: Recombinant hNGF at 0.4875ng/lane.

Lane 12: Recombinant hNGF at 0.24ng/lane.



Human NGF was detected by sandwich ELISA (using 100 μ l/well) using a concentration of 0.25-1.0 μ g/ml of ab271277. This antibody in conjunction with an appropriate capture antibody, allows the detection of at least XXXX of recombinant NGF protein.

Please note: All products are "FOR RESEARCH USE ONLY. NOT FOR USE IN DIAGNOSTIC PROCEDURES"

Our Abpromise to you: Quality guaranteed and expert technical support

- Replacement or refund for products not performing as stated on the datasheet
- Valid for 12 months from date of delivery
- Response to your inquiry within 24 hours
- We provide support in Chinese, English, French, German, Japanese and Spanish
- Extensive multi-media technical resources to help you
- We investigate all quality concerns to ensure our products perform to the highest standards

If the product does not perform as described on this datasheet, we will offer a refund or replacement. For full details of the Abpromise, please visit <https://www.abcam.com/abpromise> or contact our technical team.

Terms and conditions

- Guarantee only valid for products bought direct from Abcam or one of our authorized distributors