

Product datasheet

Biotin Anti-SARS-CoV-2 envelope protein antibody ab284658

[1 References](#) [1 Image](#)

Overview

Product name	Biotin Anti-SARS-CoV-2 envelope protein antibody
Description	Biotin Rabbit polyclonal to SARS-CoV-2 envelope protein
Host species	Rabbit
Conjugation	Biotin
Tested applications	Suitable for: ELISA
Species reactivity	Reacts with: SARS-CoV-2
Immunogen	The details of the immunogen for this antibody are not available.

Properties

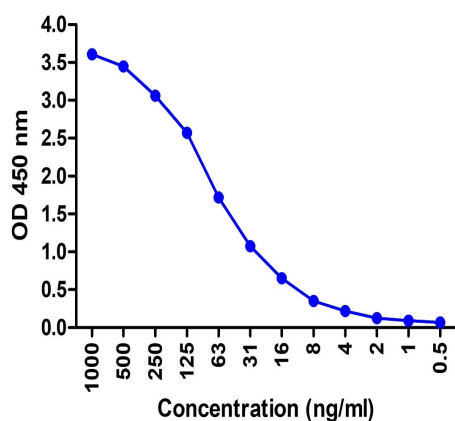
Form	Liquid
Storage instructions	Shipped at 4°C. Store at +4°C short term (1-2 weeks). Upon delivery aliquot. Store at -20°C. Avoid freeze / thaw cycle. Store In the Dark.
Storage buffer	Preservative: 0.02% Sodium azide Constituents: 0.00016% Sodium chloride, 0.00003% disodium hydrogen phosphate, 0.00001% Monobasic dihydrogen sodium phosphate, 99.9698% Water, 0.00001% Potassium chloride
Clonality	Polyclonal

Applications

The Abpromise guarantee Our **Abpromise guarantee** covers the use of ab284658 in the following tested applications. The application notes include recommended starting dilutions; optimal dilutions/concentrations should be determined by the end user.

Application	Abreviews	Notes
ELISA		Use a concentration of 0.0005 - 1 µg/ml.

Images



ELISA - Biotin Anti-SARS-CoV-2 envelope protein antibody (ab284658)

SARS envelope peptide, 10 µg/mL, incubate at 4°C overnight.

Detection Antibodies: SARS-CoV-2 Spike antibody, ab284658, dilution: 0.5-1000 ng/mL, incubate at room temperature for 1 hr.

by HRP-conjugated streptavidin at 1/10,000, incubate at room temperature for 1 hr.

Please note: All products are "FOR RESEARCH USE ONLY. NOT FOR USE IN DIAGNOSTIC PROCEDURES"

Our Abpromise to you: Quality guaranteed and expert technical support

- Replacement or refund for products not performing as stated on the datasheet
- Valid for 12 months from date of delivery
- Response to your inquiry within 24 hours
- We provide support in Chinese, English, French, German, Japanese and Spanish
- Extensive multi-media technical resources to help you
- We investigate all quality concerns to ensure our products perform to the highest standards

If the product does not perform as described on this datasheet, we will offer a refund or replacement. For full details of the Abpromise, please visit <https://www.abcam.com/abpromise> or contact our technical team.

Terms and conditions

- Guarantee only valid for products bought direct from Abcam or one of our authorized distributors