

## Product datasheet

# Biotin Anti-Thy1.1 antibody [HIS51] ab95811

★★★★☆ [1 Abreviews](#) [1 Image](#)

### Overview

---

<b>Product name</b>	Biotin Anti-Thy1.1 antibody [HIS51]
<b>Description</b>	Biotin Mouse monoclonal [HIS51] to Thy1.1
<b>Host species</b>	Mouse
<b>Conjugation</b>	Biotin
<b>Tested applications</b>	<b>Suitable for:</b> Flow Cyt
<b>Species reactivity</b>	<b>Reacts with:</b> Rat
<b>Immunogen</b>	Tissue, cells or virus corresponding to Rat Thy1.1. Rat bone marrow cells Database link: <a href="#">P01831</a>
<b>Positive control</b>	Flow Cyt: Rat thymocyte and splenocyte suspensions.
<b>General notes</b>	<p>The Life Science industry has been in the grips of a reproducibility crisis for a number of years. Abcam is leading the way in addressing this with our range of recombinant monoclonal antibodies and knockout edited cell lines for gold-standard validation. Please check that this product meets your needs before purchasing.</p> <p>If you have any questions, special requirements or concerns, please send us an inquiry and/or contact our Support team ahead of purchase. Recommended alternatives for this product can be found below, along with publications, customer reviews and Q&amp;As</p>

### Properties

---

<b>Form</b>	Liquid
<b>Storage instructions</b>	Shipped at 4°C. Store at +4°C short term (1-2 weeks). Store at -20°C or -80°C. Avoid freeze / thaw cycle.
<b>Storage buffer</b>	pH: 7.20 Preservative: 0.09% Sodium azide Constituents: 0.87% Sodium chloride, PBS
<b>Purity</b>	Protein G purified
<b>Clonality</b>	Monoclonal
<b>Clone number</b>	HIS51
<b>Isotype</b>	IgG2a
<b>Light chain type</b>	kappa

## Applications

### The Abpromise guarantee

Our **Abpromise guarantee** covers the use of ab95811 in the following tested applications.

The application notes include recommended starting dilutions; optimal dilutions/concentrations should be determined by the end user.

Application	Abreviews	Notes
Flow Cyt		Use 0.03-0.06µg for 10 <sup>5-8</sup> cells. A final volume of 100 µL is recommended for staining the cell sample.

## Target

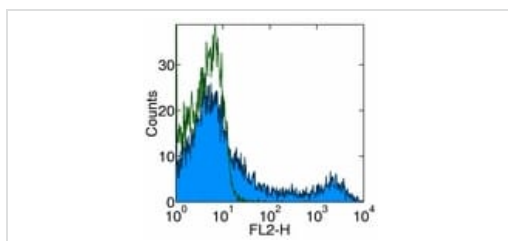
### Relevance

CD90 (Thy1) antigen is a GPI linked glycoprotein member of the Immunoglobulin superfamily. It is expressed on murine T cells, thymocytes, neural cells, cells of granulocytic lineage, early hematopoietic progenitors, fibroblasts, neurons and Kupffer's cells. Thy1 may play a role in cell to cell or cell to ligand interactions during synaptogenesis and other events in the brain. It is found in most mouse strains except AKR/J, A, Thy1.1 and B6.PL (74NS) expressing Thy1.1.

### Cellular localization

Attached to the membrane by a GPI anchor.

## Images



Flow Cytometry - Biotin Anti-Thy1.1 antibody  
[HIS51] (ab95811)

Flow cytometric analysis of Rat splenocytes with 0.03 µg of Anti-Mouse/Rat CD90.1 PE. Appropriate isotype controls were used (open histogram). Total viable cells were used for analysis.

**Please note:** All products are "FOR RESEARCH USE ONLY. NOT FOR USE IN DIAGNOSTIC PROCEDURES"

## Our Abpromise to you: Quality guaranteed and expert technical support

- Replacement or refund for products not performing as stated on the datasheet
- Valid for 12 months from date of delivery
- Response to your inquiry within 24 hours
- We provide support in Chinese, English, French, German, Japanese and Spanish

- Extensive multi-media technical resources to help you
- We investigate all quality concerns to ensure our products perform to the highest standards

If the product does not perform as described on this datasheet, we will offer a refund or replacement. For full details of the Abpromise, please visit <https://www.abcam.com/abpromise> or contact our technical team.

### **Terms and conditions**

---

- Guarantee only valid for products bought direct from Abcam or one of our authorized distributors