



# Anti-Blood Group Kell Antigen antibody ab231602

4 Images

### Overview

<b>Product name</b>	Anti-Blood Group Kell Antigen antibody
<b>Description</b>	Rabbit polyclonal to Blood Group Kell Antigen
<b>Host species</b>	Rabbit
<b>Tested applications</b>	<b>Suitable for:</b> IHC-P, WB
<b>Species reactivity</b>	<b>Reacts with:</b> Mouse
<b>Immunogen</b>	Recombinant fragment (His-T7-tag) corresponding to Mouse Blood Group Kell Antigen aa 1-400. Expressed in E.coli. N-terminal tags. Database link: <a href="#">Q9EQF2</a>
	<div>  <a href="#">Run BLAST with</a> </div> <div>  <a href="#">Run BLAST with</a> </div>
<b>Positive control</b>	WB: Recombinant mouse Blood Group Kell Antigen; mouse spleen and testis lysates. IHC-P: Mouse testis tissue.
<b>General notes</b>	<p>The Life Science industry has been in the grips of a reproducibility crisis for a number of years. Abcam is leading the way in addressing this with our range of recombinant monoclonal antibodies and knockout edited cell lines for gold-standard validation. Please check that this product meets your needs before purchasing.</p> <p>If you have any questions, special requirements or concerns, please send us an inquiry and/or contact our Support team ahead of purchase. Recommended alternatives for this product can be found below, along with publications, customer reviews and Q&amp;As</p>

### Properties

<b>Form</b>	Liquid
<b>Storage instructions</b>	Shipped at 4°C. Store at +4°C short term (1-2 weeks). Upon delivery aliquot. Store at -20°C long term. Avoid freeze / thaw cycle.
<b>Storage buffer</b>	pH: 7.40 Preservative: 0.011% Proclin 300 Constituents: 55.77% Glycerol (glycerin, glycerine), 44.219% PBS
<b>Purity</b>	Immunogen affinity purified
<b>Purification notes</b>	Antigen-specific affinity chromatography followed by Protein A affinity chromatography.
<b>Clonality</b>	Polyclonal
<b>Isotype</b>	IgG

## Applications

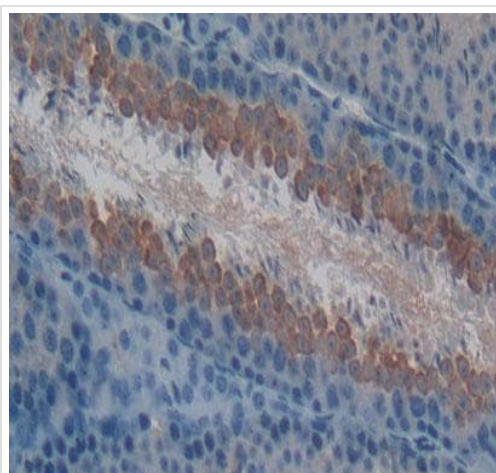
**The Abpromise guarantee** Our **Abpromise guarantee** covers the use of ab231602 in the following tested applications. The application notes include recommended starting dilutions; optimal dilutions/concentrations should be determined by the end user.

Application	Abreviews	Notes
IHC-P		Use a concentration of 5 - 20 µg/ml.
WB		Use a concentration of 0.2 - 2 µg/ml. Predicted molecular weight: 81 kDa.

## Target

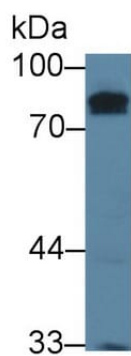
<b>Function</b>	Zinc endopeptidase with endothelin-3-converting enzyme activity.
<b>Sequence similarities</b>	Belongs to the peptidase M13 family.
<b>Cellular localization</b>	Cell membrane. Spans the erythrocyte membrane, and is attached to the underlying cytoskeleton.

## Images



Formalin-fixed, paraffin-embedded mouse testis tissue stained for Blood Group Kell Antigen using ab231602 at 20 µg/ml in immunohistochemical analysis. DAB staining.

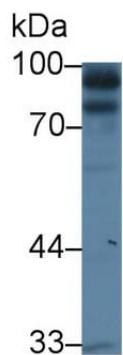
Immunohistochemistry (Formalin/PFA-fixed paraffin-embedded sections) - Anti-Blood Group Kell Antigen antibody (ab231602)



Anti-Blood Group Kell Antigen antibody (ab231602) at 2 µg/ml +  
Mouse testis lysate

**Predicted band size:** 81 kDa

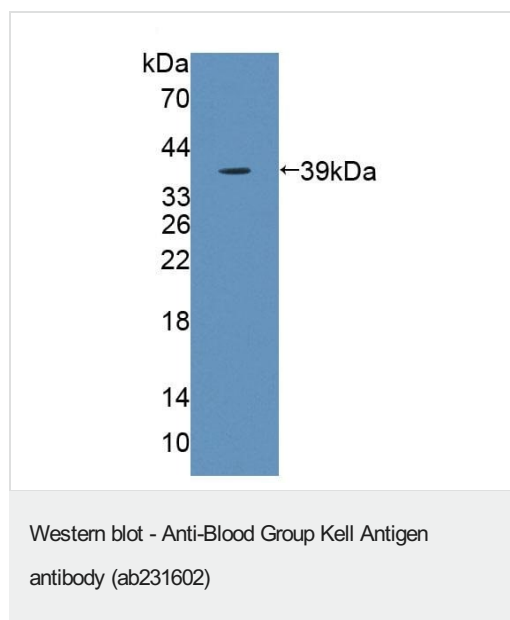
Western blot - Anti-Blood Group Kell Antigen  
antibody (ab231602)



Anti-Blood Group Kell Antigen antibody (ab231602) at 2 µg/ml +  
Mouse spleen lysate

**Predicted band size:** 81 kDa

Western blot - Anti-Blood Group Kell Antigen  
antibody (ab231602)



Anti-Blood Group Kell Antigen antibody (ab231602) at 2 µg/ml +  
Recombinant mouse Blood Group Kell Antigen protein

**Predicted band size:** 81 kDa

**Please note:** All products are "FOR RESEARCH USE ONLY. NOT FOR USE IN DIAGNOSTIC PROCEDURES"

### Our Abpromise to you: Quality guaranteed and expert technical support

---

- Replacement or refund for products not performing as stated on the datasheet
- Valid for 12 months from date of delivery
- Response to your inquiry within 24 hours
- We provide support in Chinese, English, French, German, Japanese and Spanish
- Extensive multi-media technical resources to help you
- We investigate all quality concerns to ensure our products perform to the highest standards

If the product does not perform as described on this datasheet, we will offer a refund or replacement. For full details of the Abpromise, please visit <https://www.abcam.com/abpromise> or contact our technical team.

### Terms and conditions

---

- Guarantee only valid for products bought direct from Abcam or one of our authorized distributors