

Product datasheet

Anti-Blood Group Lewis b antibody [2-25LE] ab3968

★★★★★ [1 Abreviews](#) [17 References](#) [1 Image](#)

Overview

Product name	Anti-Blood Group Lewis b antibody [2-25LE]
Description	Mouse monoclonal [2-25LE] to Blood Group Lewis b
Host species	Mouse
Tested applications	Suitable for: WB, ELISA, Flow Cyt, ICC/IF, IHC-P
Species reactivity	Reacts with: Human
Immunogen	Full length native protein (purified) corresponding to Human Blood Group Lewis b. Mucin isolated by size exclusion chromatography from an ovarian cyst fluid (pure endocervical type according to the Fenoglio.s classification).
Positive control	IHC: Human colon adenocarcinoma
General notes	<p>The Life Science industry has been in the grips of a reproducibility crisis for a number of years. Abcam is leading the way in addressing this with our range of recombinant monoclonal antibodies and knockout edited cell lines for gold-standard validation. Please check that this product meets your needs before purchasing.</p> <p>If you have any questions, special requirements or concerns, please send us an inquiry and/or contact our Support team ahead of purchase. Recommended alternatives for this product can be found below, along with publications, customer reviews and Q&As</p>

Properties

Form	Liquid
Storage instructions	Shipped at 4°C. Store at +4°C short term (1-2 weeks). Upon delivery aliquot. Store at -20°C or -80°C. Avoid freeze / thaw cycle.
Storage buffer	pH: 7.40 Preservative: 0.097% Sodium azide Constituent: PBS
Purity	Protein A purified
Purification notes	Purified from hybridoma culture supernatant. Purity >95% by SDS-PAGE.
Clonality	Monoclonal
Clone number	2-25LE
Myeloma	unknown

Isotype	IgG1
Light chain type	unknown

Applications

The Abpromise guarantee Our **Abpromise guarantee** covers the use of ab3968 in the following tested applications. The application notes include recommended starting dilutions; optimal dilutions/concentrations should be determined by the end user.

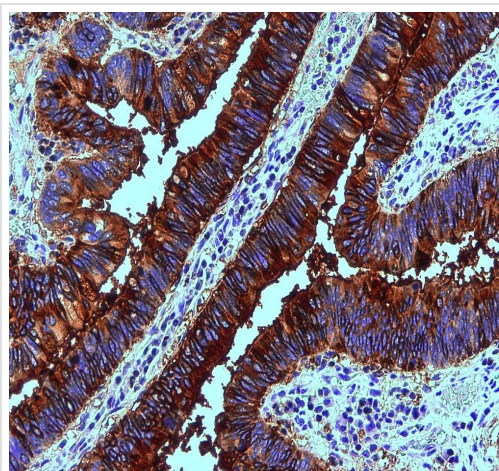
Application	Abreviews	Notes
WB		Use at an assay dependent concentration.
ELISA		Use at an assay dependent concentration.
Flow Cyt		Use at an assay dependent concentration. PubMed: 23144050 ab170190 - Mouse monoclonal IgG1, is suitable for use as an isotype control with this antibody.
ICC/IF	★★★★★ (1)	Use at an assay dependent concentration. PubMed: 17202152
IHC-P		Use a concentration of 5 - 10 µg/ml.

Target

Relevance Blood group Lewis b is a carbohydrate determinant carried on both glycolipids and glycoproteins, detected on erythrocytes, certain epithelial cells, and in secretions of certain individuals.

Cellular localization Plasma membrane - adsorbed onto the surface of erythrocytes.

Images



Immunohistochemistry (Formalin/PFA-fixed paraffin-embedded sections) analysis of human colon adenocarcinoma tissue labelling Blood Group Lewis b with ab3968 at 10 µg/mL.

Immunohistochemistry (Formalin/PFA-fixed paraffin-embedded sections) - Anti-Blood Group Lewis b antibody [2-25LE] (ab3968)

Please note: All products are "FOR RESEARCH USE ONLY. NOT FOR USE IN DIAGNOSTIC PROCEDURES"

Our Abpromise to you: Quality guaranteed and expert technical support

- Replacement or refund for products not performing as stated on the datasheet
- Valid for 12 months from date of delivery
- Response to your inquiry within 24 hours

- We provide support in Chinese, English, French, German, Japanese and Spanish
- Extensive multi-media technical resources to help you
- We investigate all quality concerns to ensure our products perform to the highest standards

If the product does not perform as described on this datasheet, we will offer a refund or replacement. For full details of the Abpromise, please visit <https://www.abcam.com/abpromise> or contact our technical team.

Terms and conditions

- Guarantee only valid for products bought direct from Abcam or one of our authorized distributors