

Anti-Blooms Syndrome Protein Blm antibody ab2179

★★★★★ [12 Abreviews](#) [45 References](#) [3 Images](#)

Overview

Product name	Anti-Blooms Syndrome Protein Blm antibody
Description	Rabbit polyclonal to Blooms Syndrome Protein Blm
Host species	Rabbit
Tested applications	Suitable for: WB, IP
Species reactivity	Reacts with: Mouse, Human
Immunogen	Synthetic peptide. This information is proprietary to Abcam and/or its suppliers.
Positive control	WB: HEK-293T, K-562, TCMK-1, NIH/3T3 and Jurkat whole cell lysate. IP: Blooms Syndrome Protein Blm in HEK-293T whole cell lysate.
General notes	<p>The Life Science industry has been in the grips of a reproducibility crisis for a number of years. Abcam is leading the way in addressing this with our range of recombinant monoclonal antibodies and knockout edited cell lines for gold-standard validation. Please check that this product meets your needs before purchasing.</p> <p>If you have any questions, special requirements or concerns, please send us an inquiry and/or contact our Support team ahead of purchase. Recommended alternatives for this product can be found below, along with publications, customer reviews and Q&As</p>

Properties

Form	Liquid
Storage instructions	Shipped at 4°C. Upon delivery aliquot and store at -20°C. Avoid freeze / thaw cycles.
Storage buffer	pH: 7 Preservative: 0.1% Sodium azide
Purity	Immunogen affinity purified
Clonality	Polyclonal
Isotype	IgG

Applications

The Abpromise guarantee Our **Abpromise guarantee** covers the use of ab2179 in the following tested applications.

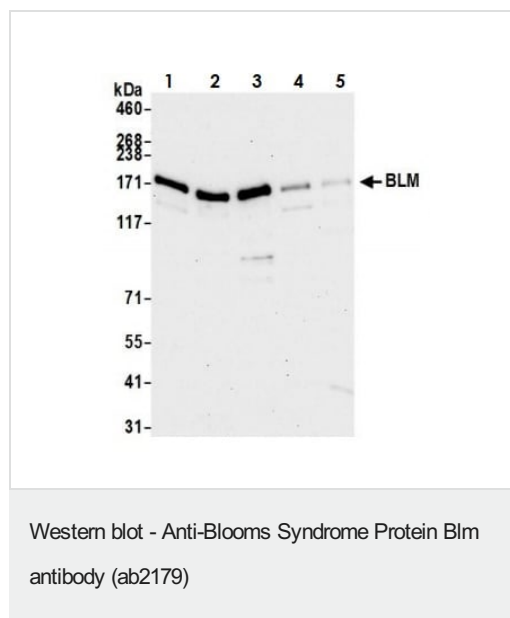
The application notes include recommended starting dilutions; optimal dilutions/concentrations should be determined by the end user.

Application	Abreviews	Notes
WB	★★★★★ (6)	1/2000 - 1/10000. Detects a band of approximately 170 kDa (predicted molecular weight: 159 kDa).
IP	★★★★★ (1)	Use at 2-10 µg/mg of lysate.

Target

Function	Participates in DNA replication and repair. Exhibits a magnesium-dependent ATP-dependent DNA-helicase activity that unwinds single- and double-stranded DNA in a 3'-5' direction.
Involvement in disease	Defects in BLM are the cause of Bloom syndrome (BLM) [MIM:210900]. BLM is an autosomal recessive disorder characterized by proportionate pre- and postnatal growth deficiency, sun-sensitive telangiectatic hypo- and hyperpigmented skin, predisposition to malignancy, and chromosomal instability.
Sequence similarities	Belongs to the helicase family. RecQ subfamily. Contains 1 helicase ATP-binding domain. Contains 1 helicase C-terminal domain. Contains 1 HRDC domain.
Post-translational modifications	Phosphorylated in response to DNA damage. Phosphorylation requires the FANCA-FANCC-FANCE-FANCF-FANCG protein complex, as well as the presence of RMI1.
Cellular localization	Nucleus.

Images



All lanes : Anti-Blooms Syndrome Protein Blm antibody (ab2179) at 0.1 µg/ml

Lane 1 : HEK-293T (Human epithelial cell line from embryonic kidney transformed with large T antigen) whole cell lysate

Lane 2 : K-562 (Human chronic myelogenous leukemia lymphoblast cell line) whole cell lysate

Lane 3 : Jurkat (Human T cell leukemia cell line from peripheral blood) whole cell lysate

Lane 4 : HeLa (Human epithelial cell line from cervix adenocarcinoma) whole cell lysate

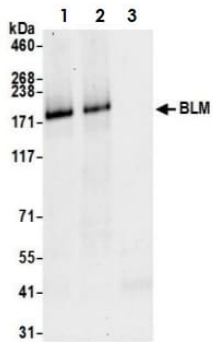
Lane 5 : A549 (Human lung carcinoma cell line) whole cell lysate

Lysates/proteins at 15 µg per lane.

Predicted band size: 159 kDa

Exposure time: 30 seconds

Lysates prepared using NETN lysis buffer.



Immunoprecipitation - Anti-Blooms Syndrome
Protein BLM antibody (ab2179)

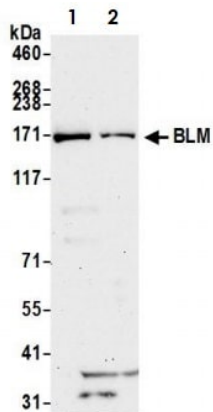
Samples: Whole cell lysate (1.0 mg per IP reaction; 20% of IP loaded) from HEK-293T cells prepared using NETN lysis buffer.

Antibodies: ab2179 used for IP at 6 µg per reaction.

Two lots tested (Lanes 1 and 2).

Lane 3 is Control IgG.

For blotting immunoprecipitated BLM, ab2179 was used at 0.1 µg/ml. Detection: Chemiluminescence with an exposure time of 10 seconds.



Western blot - Anti-Blooms Syndrome Protein BLM
antibody (ab2179)

All lanes : Anti-Blooms Syndrome Protein BLM antibody (ab2179) at 0.1 µg/ml

Lane 1 : TCMK-1 (Mouse kidney epithelial cell line) whole cell lysate

Lane 2 : NIH/3T3 (Mouse embryonic fibroblast cell line) whole cell lysate

Lysates/proteins at 50 µg per lane.

Predicted band size: 159 kDa

Exposure time: 75 seconds

Lysates prepared using NETN lysis buffer.

Please note: All products are "FOR RESEARCH USE ONLY. NOT FOR USE IN DIAGNOSTIC PROCEDURES"

Our Abpromise to you: Quality guaranteed and expert technical support

- Replacement or refund for products not performing as stated on the datasheet
- Valid for 12 months from date of delivery

- Response to your inquiry within 24 hours
- We provide support in Chinese, English, French, German, Japanese and Spanish
- Extensive multi-media technical resources to help you
- We investigate all quality concerns to ensure our products perform to the highest standards

If the product does not perform as described on this datasheet, we will offer a refund or replacement. For full details of the Abpromise, please visit <https://www.abcam.com/abpromise> or contact our technical team.

Terms and conditions

- Guarantee only valid for products bought direct from Abcam or one of our authorized distributors