




Product datasheet

Anti-BMP8 α /OP-2 antibody ab154373

[2 Images](#)

Overview

Product name	Anti-BMP8 α /OP-2 antibody
Description	Rabbit polyclonal to BMP8 α /OP-2
Host species	Rabbit
Tested applications	Suitable for: WB, ICC/IF
Species reactivity	Reacts with: Mouse, Human Predicted to work with: Rat 
Immunogen	Synthetic peptide corresponding to Human BMP8 α /OP-2 aa 336-402 (C terminal). Sequence: FPLDSCMNATNHAILQSLVHLMKPNVAVPKACCAPTKLSAT SVLYYDSSNN VILRKHRNMVVKACGCH Database link: Q7Z5Y6  Run BLAST with  Run BLAST with
Positive control	293T, A431, H1299, HeLaS3 or Raji whole cell lysate; mouse ESC D3.
General notes	<p>The Life Science industry has been in the grips of a reproducibility crisis for a number of years. Abcam is leading the way in addressing this with our range of recombinant monoclonal antibodies and knockout edited cell lines for gold-standard validation. Please check that this product meets your needs before purchasing.</p> <p>If you have any questions, special requirements or concerns, please send us an inquiry and/or contact our Support team ahead of purchase. Recommended alternatives for this product can be found below, along with publications, customer reviews and Q&As</p>

Properties

Form	Liquid
Storage instructions	Shipped at 4°C. Upon delivery aliquot. Store at -20°C or -80°C. Avoid freeze / thaw cycle.
Storage buffer	pH: 7.00 Preservative: 0.01% Thimerosal (merthiolate) Constituents: 1.21% Tris, 0.75% Glycine, 10% Glycerol (glycerin, glycerine)
Purity	Immunogen affinity purified
Clonality	Polyclonal

Isotype

IgG

Applications

The Abpromise guarantee

Our **Abpromise guarantee** covers the use of ab154373 in the following tested applications.

The application notes include recommended starting dilutions; optimal dilutions/concentrations should be determined by the end user.

Application	Abreviews	Notes
WB		1/500 - 1/3000. Predicted molecular weight: 45 kDa.
ICC/IF		1/100 - 1/1000.

Target

Function

Induces cartilage and bone formation. May be the osteoinductive factor responsible for the phenomenon of epithelial osteogenesis. Plays a role in calcium regulation and bone homeostasis.

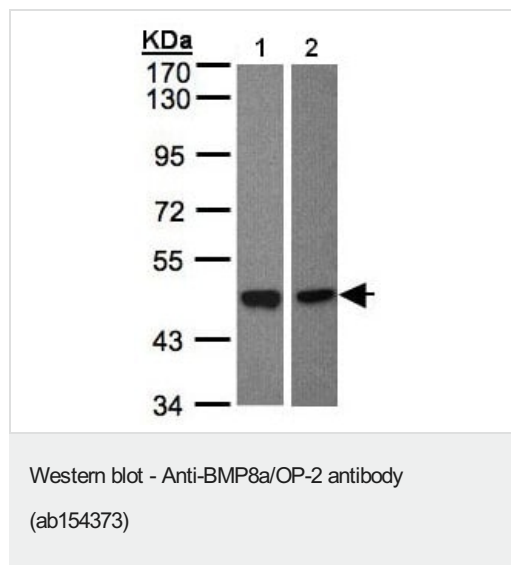
Sequence similarities

Belongs to the TGF-beta family.

Cellular localization

Secreted.

Images



All lanes : Anti-BMP8a/OP-2 antibody (ab154373) at 1/500 dilution

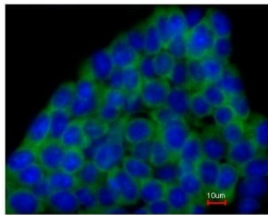
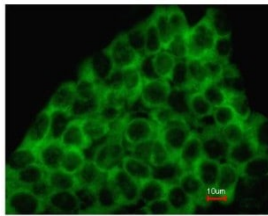
Lane 1 : H1299 whole cell lysate

Lane 2 : Raji whole cell lysate

Lysates/proteins at 30 µg per lane.

Predicted band size: 45 kDa

7.5% SDS PAGE



Immunofluorescence analysis of paraformaldehyde-fixed mouse ESC D3, labeling BMP8a/OP-2 using ab154373 at 1/200 dilution. Lower panel co-stained with Hoechst 33342.

Immunocytochemistry/ Immunofluorescence - Anti-BMP8a/OP-2 antibody (ab154373)

Please note: All products are "FOR RESEARCH USE ONLY. NOT FOR USE IN DIAGNOSTIC PROCEDURES"

Our Abpromise to you: Quality guaranteed and expert technical support

- Replacement or refund for products not performing as stated on the datasheet
- Valid for 12 months from date of delivery
- Response to your inquiry within 24 hours
- We provide support in Chinese, English, French, German, Japanese and Spanish
- Extensive multi-media technical resources to help you
- We investigate all quality concerns to ensure our products perform to the highest standards

If the product does not perform as described on this datasheet, we will offer a refund or replacement. For full details of the Abpromise, please visit <https://www.abcam.com/abpromise> or contact our technical team.

Terms and conditions

- Guarantee only valid for products bought direct from Abcam or one of our authorized distributors