

Anti-BOB1 antibody [BOB1/2424] α b238035

3 Images

Overview

| | |
|----------------------------|---|
| Product name | Anti-BOB1 antibody [BOB1/2424] |
| Description | Mouse monoclonal [BOB1/2424] to BOB1 |
| Host species | Mouse |
| Tested applications | Suitable for: Protein Array, WB, IHC-P |
| Species reactivity | Reacts with: Human |
| Immunogen | Recombinant fragment within Human BOB1 aa 148-255. The exact sequence is proprietary. Database link: Q16633 |
| Positive control | WB: Raji cell lysate. IHC-P: Human spleen tissue. |
| General notes | <p>The Life Science industry has been in the grips of a reproducibility crisis for a number of years. Abcam is leading the way in addressing this with our range of recombinant monoclonal antibodies and knockout edited cell lines for gold-standard validation. Please check that this product meets your needs before purchasing.</p> <p>If you have any questions, special requirements or concerns, please send us an inquiry and/or contact our Support team ahead of purchase. Recommended alternatives for this product can be found below, along with publications, customer reviews and Q&As</p> |

Properties

| | |
|-----------------------------|---|
| Form | Liquid |
| Storage instructions | Shipped at 4°C. Store at +4°C short term (1-2 weeks). Upon delivery aliquot. Store at -20°C long term. Avoid freeze / thaw cycle. |
| Storage buffer | pH: 7.2 Preservative: 0.05% Sodium azide Constituents: PBS, 0.05% BSA |
| Purity | Protein A/G purified |
| Purification notes | Purified from Bioreactor Concentrate by Protein A/G. |
| Clonality | Monoclonal |
| Clone number | BOB1/2424 |
| Isotype | IgG2b |
| Light chain type | kappa |

Applications

The Abpromise guarantee

Our **Abpromise guarantee** covers the use of ab238035 in the following tested applications.

The application notes include recommended starting dilutions; optimal dilutions/concentrations should be determined by the end user.

| Application | Abreviews | Notes |
|---------------|-----------|--|
| Protein Array | | Use at an assay dependent concentration. |
| WB | | Use a concentration of 1 - 2 µg/ml. Predicted molecular weight: 27 kDa. |
| IHC-P | | Use a concentration of 1 - 2 µg/ml. Perform heat mediated antigen retrieval with citrate buffer pH 6 before commencing with IHC staining protocol. Incubate with primary antibody for 30 minutes at room temperature. |

Target

Function

Transcriptional coactivator that specifically associates with either OCT1 or OCT2. It boosts the OCT1 mediated promoter activity and to a lesser extent, that of OCT2. It has no intrinsic DNA-binding activity. It recognizes the POU domains of OCT1 and OCT2. It is essential for the response of B-cells to antigens and required for the formation of germinal centers.

Tissue specificity

B-cell specific.

Involvement in disease

Note=A chromosomal aberration involving POU2AF1/OBF1 may be a cause of a form of B-cell leukemia. Translocation t(3;11)(q27;q23) with BCL6.

Sequence similarities

Belongs to the POU2AF1 family.

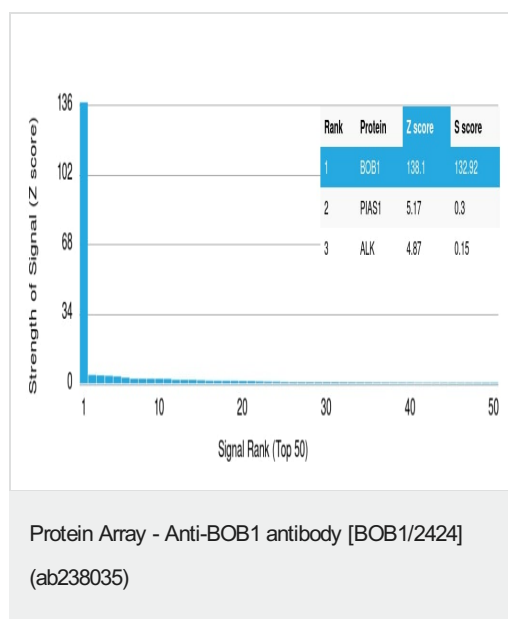
Post-translational modifications

Ubiquitinated; mediated by SIAH1 or SIAH2 and leading to its subsequent proteasomal degradation.

Cellular localization

Nucleus.

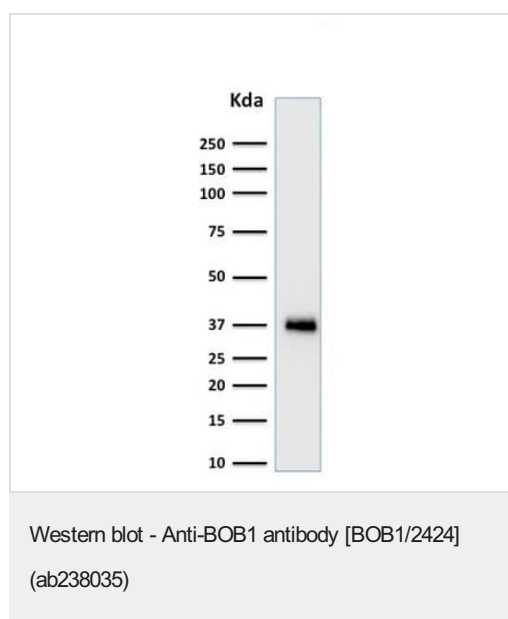
Images



ab238035 was tested in protein array against over 19000 different full-length human proteins.

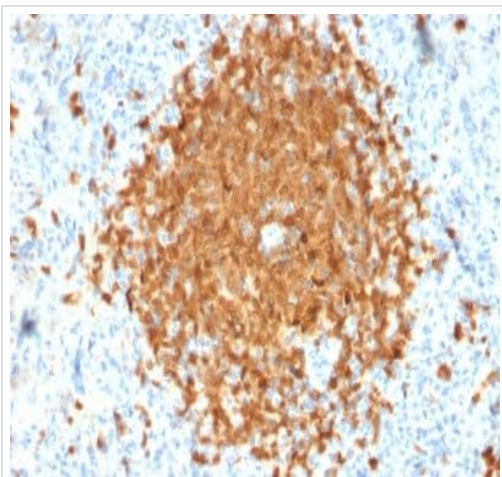
Z- and S- Score: The Z-score represents the strength of a signal that a monoclonal antibody (MAb) (in combination with a fluorescently-tagged anti-IgG secondary antibody) produces when binding to a particular protein on the HuProt™ array. Z-scores are described in units of standard deviations (SD's) above the mean value of all signals generated on that array. If targets on HuProt™ are arranged in descending order of the Z-score, the S-score is the difference (also in units of SD's) between the Z-score. S-score therefore represents the relative target specificity of a MAb to its intended target.

A MAb is specific to its intended target if the MAb has an S-score of at least 2.5. For example, if a MAb binds to protein X with a Z-score of 43 and to protein Y with a Z-score of 14, then the S-score for the binding of that MAb to protein X is equal to 29.



Anti-BOB1 antibody [BOB1/2424] (ab238035) + Raji (human Burkitt's lymphoma cell line) cell lysate

Predicted band size: 27 kDa



Formalin-fixed, paraffin-embedded human spleen tissue stained for BOB1 using ab238035 at 2 µg/ml in immunohistochemical analysis.

Immunohistochemistry (Formalin/PFA-fixed paraffin-embedded sections) - Anti-BOB1 antibody
[BOB1/2424] (ab238035)

Please note: All products are "FOR RESEARCH USE ONLY. NOT FOR USE IN DIAGNOSTIC PROCEDURES"

Our Abpromise to you: Quality guaranteed and expert technical support

- Replacement or refund for products not performing as stated on the datasheet
- Valid for 12 months from date of delivery
- Response to your inquiry within 24 hours
- We provide support in Chinese, English, French, German, Japanese and Spanish
- Extensive multi-media technical resources to help you
- We investigate all quality concerns to ensure our products perform to the highest standards

If the product does not perform as described on this datasheet, we will offer a refund or replacement. For full details of the Abpromise, please visit <https://www.abcam.com/abpromise> or contact our technical team.

Terms and conditions

- Guarantee only valid for products bought direct from Abcam or one of our authorized distributors