

Product datasheet

Anti-Borealin/CDCA8 antibody ab67126

★★★★ 4 [Abreviews](#) 2 [References](#) 1 [Image](#)

Overview

Product name	Anti-Borealin/CDCA8 antibody
Description	Mouse polyclonal to Borealin/CDCA8
Host species	Mouse
Tested applications	Suitable for: WB
Species reactivity	Reacts with: Human
Immunogen	Full length native Borealin/CDCA8 (purified) (Human)
General notes	<p>The Life Science industry has been in the grips of a reproducibility crisis for a number of years. Abcam is leading the way in addressing this with our range of recombinant monoclonal antibodies and knockout edited cell lines for gold-standard validation. Please check that this product meets your needs before purchasing.</p> <p>If you have any questions, special requirements or concerns, please send us an inquiry and/or contact our Support team ahead of purchase. Recommended alternatives for this product can be found below, along with publications, customer reviews and Q&As</p>

Properties

Form	Liquid
Storage instructions	Shipped at 4°C. Upon delivery aliquot and store at -20°C. Avoid freeze / thaw cycles.
Storage buffer	pH: 7.40 Constituent: 100% PBS
Purity	Protein G purified
Clonality	Polyclonal
Isotype	IgG

Applications

The Abpromise guarantee Our **Abpromise guarantee** covers the use of ab67126 in the following tested applications. The application notes include recommended starting dilutions; optimal dilutions/concentrations should be determined by the end user.

Application	Abreviews	Notes
WB	★★★★★ (2)	1/500 - 1/1000. Detects a band of approximately 31 kDa (predicted molecular weight: 31 kDa).

Target

Function

Component of the chromosomal passenger complex (CPC), a complex that acts as a key regulator of mitosis. The CPC complex has essential functions at the centromere in ensuring correct chromosome alignment and segregation and is required for chromatin-induced microtubule stabilization and spindle assembly. In the complex, it may be required to direct the CPC to centromeric DNA. Major effector of the TTK kinase in the control of attachment-error-correction and chromosome alignment.

Sequence similarities

Belongs to the borealin family.

Developmental stage

Cell-cycle regulated. Increases during G2/M phase and then reduces after exit from M phase.

Domain

The C-terminal region (aa 207-280) represents the dimerization motif.

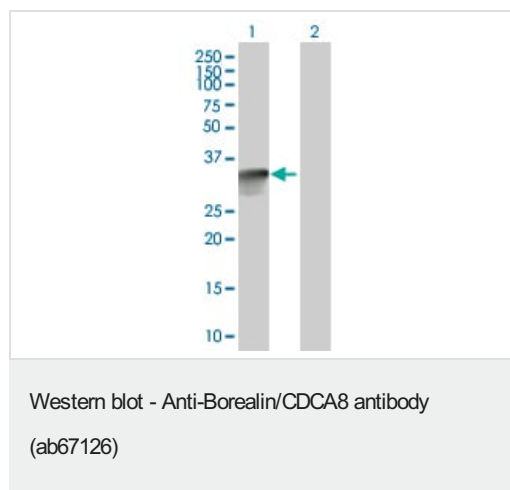
Post-translational modifications

Phosphorylated by TTK, essentially at Thr-88, Thr94, Thr-169 and Thr-230. Sumoylated by UBE2I and RANBP2. Desumoylated by SENP3 through the removal of SUMO2 and SUMO3.

Cellular localization

Nucleus > nucleolus. Cytoplasm. Cytoplasm > cytoskeleton > spindle. Chromosome > centromere. Localizes on chromosome arms and inner centromeres from prophase through metaphase and then transferring to the spindle midzone and midbody from anaphase through cytokinesis. Colocalizes with SENP3 in the nucleolus in interphase cells.

Images



All lanes : Anti-Borealin/CDCA8 antibody (ab67126) at 1/500 dilution

Lane 1 : Borealin/CDCA8 transfected 293T cell lysate

Lane 2 : Untransfected 293T cell lysate

Secondary

All lanes : Goat anti mouse IgG (H&L)-HRP conjugate secondary antibody at 1/2500 dilution

Predicted band size: 31 kDa

Observed band size: 31 kDa

Please note: All products are "FOR RESEARCH USE ONLY. NOT FOR USE IN DIAGNOSTIC PROCEDURES"

Our Abpromise to you: Quality guaranteed and expert technical support

- Replacement or refund for products not performing as stated on the datasheet
- Valid for 12 months from date of delivery
- Response to your inquiry within 24 hours

- We provide support in Chinese, English, French, German, Japanese and Spanish
- Extensive multi-media technical resources to help you
- We investigate all quality concerns to ensure our products perform to the highest standards

If the product does not perform as described on this datasheet, we will offer a refund or replacement. For full details of the Abpromise, please visit <https://www.abcam.com/abpromise> or contact our technical team.

Terms and conditions

- Guarantee only valid for products bought direct from Abcam or one of our authorized distributors