

### Anti-Borealin/CDCA8 antibody ab74473

★★★★★ [1 Abreviews](#) [1 References](#) [2 Images](#)

#### Overview

<b>Product name</b>	Anti-Borealin/CDCA8 antibody
<b>Description</b>	Rabbit polyclonal to Borealin/CDCA8
<b>Host species</b>	Rabbit
<b>Tested applications</b>	<b>Suitable for:</b> WB, ICC/IF
<b>Species reactivity</b>	<b>Reacts with:</b> Rat
<b>Immunogen</b>	Synthetic peptide. This information is proprietary to Abcam and/or its suppliers.
<b>Positive control</b>	Rat kidney tissue lysate
<b>General notes</b>	<p>The Life Science industry has been in the grips of a reproducibility crisis for a number of years. Abcam is leading the way in addressing this with our range of recombinant monoclonal antibodies and knockout edited cell lines for gold-standard validation. Please check that this product meets your needs before purchasing.</p> <p>If you have any questions, special requirements or concerns, please send us an inquiry and/or contact our Support team ahead of purchase. Recommended alternatives for this product can be found below, along with publications, customer reviews and Q&amp;As</p>

#### Properties

<b>Form</b>	Liquid
<b>Storage instructions</b>	Shipped at 4°C. Store at +4°C.
<b>Storage buffer</b>	pH: 7.2 Preservative: 0.02% Sodium azide Constituent: PBS
<b>Purity</b>	Immunogen affinity purified
<b>Clonality</b>	Polyclonal
<b>Isotype</b>	IgG

#### Applications

**The Abpromise guarantee** Our **Abpromise guarantee** covers the use of ab74473 in the following tested applications. The application notes include recommended starting dilutions; optimal dilutions/concentrations should be determined by the end user.

Application	Abreviews	Notes
WB	★★★★★ (1)	Use a concentration of 1 µg/ml. Detects a band of approximately 38 kDa (predicted molecular weight: 31 kDa).
ICC/IF		Use at an assay dependent concentration.

## Target

### Function

Component of the chromosomal passenger complex (CPC), a complex that acts as a key regulator of mitosis. The CPC complex has essential functions at the centromere in ensuring correct chromosome alignment and segregation and is required for chromatin-induced microtubule stabilization and spindle assembly. In the complex, it may be required to direct the CPC to centromeric DNA. Major effector of the TTK kinase in the control of attachment-error-correction and chromosome alignment.

### Sequence similarities

Belongs to the borealin family.

### Developmental stage

Cell-cycle regulated. Increases during G2/M phase and then reduces after exit from M phase.

### Domain

The C-terminal region (aa 207-280) represents the dimerization motif.

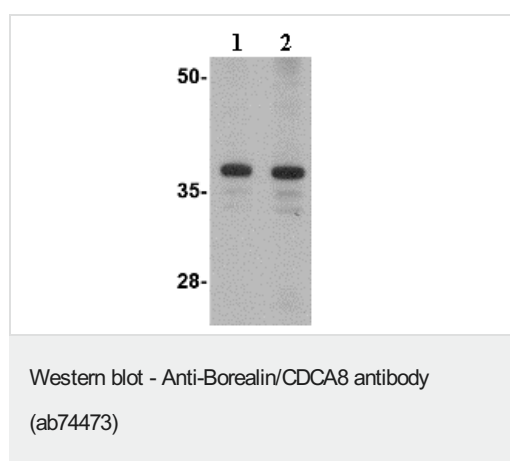
### Post-translational modifications

Phosphorylated by TTK, essentially at Thr-88, Thr94, Thr-169 and Thr-230.  
Sumoylated by UBE2I and RANBP2. Desumoylated by SENP3 through the removal of SUMO2 and SUMO3.

### Cellular localization

Nucleus > nucleolus. Cytoplasm. Cytoplasm > cytoskeleton > spindle. Chromosome > centromere. Localizes on chromosome arms and inner centromeres from prophase through metaphase and then transferring to the spindle midzone and midbody from anaphase through cytokinesis. Colocalizes with SENP3 in the nucleolus in interphase cells.

## Images



**Lane 1 :** Anti-Borealin/CDCA8 antibody (ab74473) at 1 µg/ml

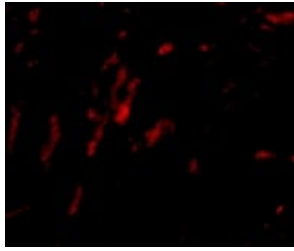
**Lane 2 :** Anti-Borealin/CDCA8 antibody (ab74473) at 2 µg/ml

**All lanes :** Rat kidney lysate

Lysates/proteins at 15 µg per lane.

**Predicted band size:** 31 kDa

**Observed band size:** 38 kDa



Immunofluorescence of CDCA8 in Rat Kidney cells using ab74473 at 20 ug/ml.

Immunocytochemistry/ Immunofluorescence - Anti-Borealine/CDCA8 antibody (ab74473)

**Please note:** All products are "FOR RESEARCH USE ONLY. NOT FOR USE IN DIAGNOSTIC PROCEDURES"

#### Our Abpromise to you: Quality guaranteed and expert technical support

---

- Replacement or refund for products not performing as stated on the datasheet
- Valid for 12 months from date of delivery
- Response to your inquiry within 24 hours
- We provide support in Chinese, English, French, German, Japanese and Spanish
- Extensive multi-media technical resources to help you
- We investigate all quality concerns to ensure our products perform to the highest standards

If the product does not perform as described on this datasheet, we will offer a refund or replacement. For full details of the Abpromise, please visit <https://www.abcam.com/abpromise> or contact our technical team.

#### Terms and conditions

---

- Guarantee only valid for products bought direct from Abcam or one of our authorized distributors