


## Product datasheet

### Anti-BOULE/BOLL antibody ab155261

★★★★★ [2 Abreviews](#) [1 Image](#)

#### Overview

<b>Product name</b>	Anti-BOULE/BOLL antibody
<b>Description</b>	Rabbit polyclonal to BOULE/BOLL
<b>Host species</b>	Rabbit
<b>Tested applications</b>	<b>Suitable for:</b> WB
<b>Species reactivity</b>	<b>Reacts with:</b> Mouse <b>Predicted to work with:</b> Rat, Cow, Human, Monkey 
<b>Immunogen</b>	Recombinant fragment corresponding to Human BOULE/BOLL aa 50-300. Database link: <a href="#">Q8N9W6</a>
<b>Positive control</b>	Mouse testis lysate.
<b>General notes</b>	<p>The Life Science industry has been in the grips of a reproducibility crisis for a number of years. Abcam is leading the way in addressing this with our range of recombinant monoclonal antibodies and knockout edited cell lines for gold-standard validation. Please check that this product meets your needs before purchasing.</p> <p>If you have any questions, special requirements or concerns, please send us an inquiry and/or contact our Support team ahead of purchase. Recommended alternatives for this product can be found below, along with publications, customer reviews and Q&amp;As</p>

#### Properties

<b>Form</b>	Liquid
<b>Storage instructions</b>	Shipped at 4°C. Upon delivery aliquot. Store at -20°C or -80°C. Avoid freeze / thaw cycle.
<b>Storage buffer</b>	pH: 7.00 Preservative: 0.01% Thimerosal (merthiolate) Constituents: 1.21% Tris, 0.75% Glycine, 20% Glycerol (glycerin, glycerine)
<b>Purity</b>	Immunogen affinity purified
<b>Clonality</b>	Polyclonal
<b>Isotype</b>	IgG

#### Applications

## The Abpromise guarantee

Our **Abpromise guarantee** covers the use of ab155261 in the following tested applications.

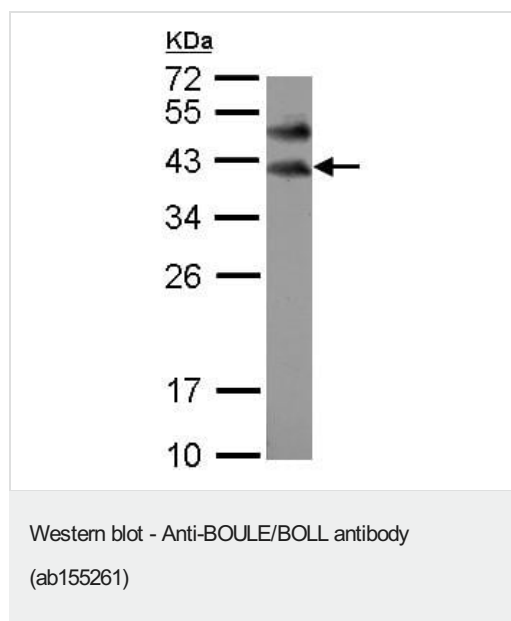
The application notes include recommended starting dilutions; optimal dilutions/concentrations should be determined by the end user.

Application	Abreviews	Notes
WB		1/500 - 1/3000. Predicted molecular weight: 31 kDa.

## Target

Function	Probable RNA-binding protein, which may be required during spermatogenesis. May act by binding to the 3'-UTR of mRNAs and regulating their translation.
Tissue specificity	Testis specific. Not expressed in early embryos, primordial germ cells and spermatogonial cells. First expressed in the cytoplasm of spermatocytes and then persists through meiosis.
Sequence similarities	Belongs to the RRM DAZ family. Contains 1 DAZ-like domain. Contains 1 RRM (RNA recognition motif) domain.
Cellular localization	Cytoplasm.

## Images



Anti-BOULE/BOLL antibody (ab155261) at 1/1000 dilution + mouse testis lysate at 50 µg

**Predicted band size:** 31 kDa

12% SDS PAGE

**Please note:** All products are "FOR RESEARCH USE ONLY. NOT FOR USE IN DIAGNOSTIC PROCEDURES"

## Our Abpromise to you: Quality guaranteed and expert technical support

- Replacement or refund for products not performing as stated on the datasheet
- Valid for 12 months from date of delivery
- Response to your inquiry within 24 hours
- We provide support in Chinese, English, French, German, Japanese and Spanish

- Extensive multi-media technical resources to help you
- We investigate all quality concerns to ensure our products perform to the highest standards

If the product does not perform as described on this datasheet, we will offer a refund or replacement. For full details of the Abpromise, please visit <https://www.abcam.com/abpromise> or contact our technical team.

#### **Terms and conditions**

---

- Guarantee only valid for products bought direct from Abcam or one of our authorized distributors