

## Product datasheet

# Anti-Bovine Papilloma Virus E2 antibody [1H10] ab77174

[2 References](#) [1 Image](#)

### Overview

<b>Product name</b>	Anti-Bovine Papilloma Virus E2 antibody [1H10]
<b>Description</b>	Mouse monoclonal [1H10] to Bovine Papilloma Virus E2
<b>Host species</b>	Mouse
<b>Tested applications</b>	<b>Suitable for:</b> WB, ICC/IF
<b>Species reactivity</b>	<b>Reacts with:</b> Bovine papillomavirus
<b>Immunogen</b>	Recombinant full length Bovine Papillomavirus E2-protein expressed in E Coli.
<b>Epitope</b>	Mapped to amino acids 208-218 (RPDGVWVASEG)
<b>General notes</b>	<p>The Life Science industry has been in the grips of a reproducibility crisis for a number of years. Abcam is leading the way in addressing this with our range of recombinant monoclonal antibodies and knockout edited cell lines for gold-standard validation. Please check that this product meets your needs before purchasing.</p> <p>If you have any questions, special requirements or concerns, please send us an inquiry and/or contact our Support team ahead of purchase. Recommended alternatives for this product can be found below, along with publications, customer reviews and Q&amp;As</p>

### Properties

<b>Form</b>	Liquid
<b>Storage instructions</b>	Shipped at 4°C. Upon delivery aliquot and store at -20°C or -80°C. Avoid repeated freeze / thaw cycles.
<b>Storage buffer</b>	pH: 7.4 Constituents: 50% Glycerol (glycerin, glycerine), PBS
<b>Purity</b>	Protein A purified
<b>Clonality</b>	Monoclonal
<b>Clone number</b>	1H10
<b>Isotype</b>	IgG

### Applications

## The Abpromise guarantee

Our **Abpromise guarantee** covers the use of ab77174 in the following tested applications.

The application notes include recommended starting dilutions; optimal dilutions/concentrations should be determined by the end user.

Application	Abreviews	Notes
WB		Use a concentration of 0.2 - 1 µg/ml. Predicted molecular weight: 45 kDa. WB: 1/1000 - 1/5000 for 1 hour at RT, in TBST with 2% non-fat dry milk.
ICC/IF		Use a concentration of 1 µg/ml. 1/1000 for 1 hour at RT, in PBS with 1% BSA.

## Target

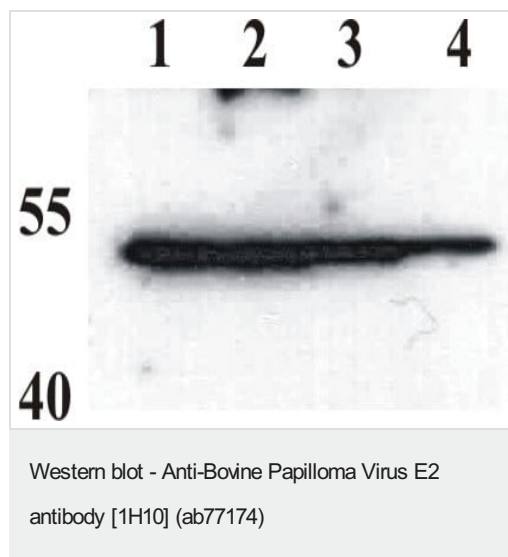
### Relevance

The bovine papilloma virus E2 protein is the master regulator of papillomavirus replication and transcription. Binds to the E2RE response element (5'-ACCNNNNNNGGT-3') present in multiple copies in the regulatory region. Can either activate or repress transcription depending on E2RE's position with regards to proximal promoter elements. Repression occurs by sterically hindering the assembly of the transcription initiation complex. The E1-E2 complex binds to the origin of DNA replication.

### Cellular localization

Host cell nucleus

## Images



**All lanes :** Anti-Bovine Papilloma Virus E2 antibody [1H10] (ab77174)

**Lane 1 :** Recombinant purified Bovine Papillomavirus E2 protein at 10000 µg

**Lane 2 :** Recombinant purified Bovine Papillomavirus E2 protein at 5000 µg

**Lane 3 :** Recombinant purified Bovine Papillomavirus E2 protein at 1000 µg

**Lane 4 :** Recombinant purified Bovine Papillomavirus E2 protein at 500 µg

**Predicted band size:** 45 kDa

**Please note:** All products are "FOR RESEARCH USE ONLY. NOT FOR USE IN DIAGNOSTIC PROCEDURES"

**Our Abpromise to you: Quality guaranteed and expert technical support**

- Replacement or refund for products not performing as stated on the datasheet
- Valid for 12 months from date of delivery
- Response to your inquiry within 24 hours
- We provide support in Chinese, English, French, German, Japanese and Spanish
- Extensive multi-media technical resources to help you
- We investigate all quality concerns to ensure our products perform to the highest standards

If the product does not perform as described on this datasheet, we will offer a refund or replacement. For full details of the Abpromise, please visit <https://www.abcam.com/abpromise> or contact our technical team.

#### **Terms and conditions**

---

- Guarantee only valid for products bought direct from Abcam or one of our authorized distributors