

Product datasheet

Anti-BPIFB1 antibody ab183143

[2 Images](#)

Overview

| | |
|----------------------------|---|
| Product name | Anti-BPIFB1 antibody |
| Description | Rabbit polyclonal to BPIFB1 |
| Host species | Rabbit |
| Tested applications | Suitable for: WB, IHC-P |
| Species reactivity | Reacts with: Human |
| Immunogen | Synthetic peptide within Human BPIFB1 aa 100-200. The exact immunogen sequence used to generate this antibody is proprietary information. If additional detail on the immunogen is needed to determine the suitability of the antibody for your needs, please contact our Scientific Support team to discuss your requirements. (NP_149974). Database link: Q8TDL5 Run BLAST with Run BLAST with |
| Positive control | Human tongue and laryngocarcinoma tissue lysates; Human breast cancer tissue. |
| General notes | <p>The Life Science industry has been in the grips of a reproducibility crisis for a number of years. Abcam is leading the way in addressing this with our range of recombinant monoclonal antibodies and knockout edited cell lines for gold-standard validation. Please check that this product meets your needs before purchasing.</p> <p>If you have any questions, special requirements or concerns, please send us an inquiry and/or contact our Support team ahead of purchase. Recommended alternatives for this product can be found below, along with publications, customer reviews and Q&As</p> |

Properties

| | |
|-----------------------------|---|
| Form | Liquid |
| Storage instructions | Shipped at 4°C. Store at +4°C short term (1-2 weeks). Upon delivery aliquot. Store at -20°C long term. Avoid freeze / thaw cycle. |
| Storage buffer | pH: 7.4 Preservative: 0.05% Sodium azide Constituents: 49% PBS, 50% Glycerol (glycerin, glycerine) Note: PBS without Mg ²⁺ and Ca ²⁺ . |
| Purity | Immunogen affinity purified |

| | |
|------------------|------------|
| Clonality | Polyclonal |
| Isotype | IgG |

Applications

The Abpromise guarantee Our **Abpromise guarantee** covers the use of ab183143 in the following tested applications.

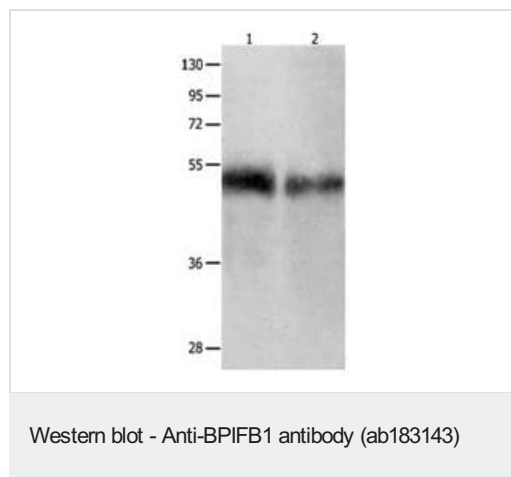
The application notes include recommended starting dilutions; optimal dilutions/concentrations should be determined by the end user.

| Application | Abreviews | Notes |
|-------------|-----------|---|
| WB | | 1/500 - 1/2000. Predicted molecular weight: 52 kDa. |
| IHC-P | | 1/25 - 1/100. |

Target

| | |
|------------------------------|--|
| Function | May play a role in innate immunity in mouth, nose and lungs. |
| Tissue specificity | Detected in trachea, nasal septal epithelium and lung. |
| Sequence similarities | Belongs to the BPI/LBP/Plunc superfamily. Plunc family. |
| Cellular localization | Secreted. |

Images



All lanes : Anti-BPIFB1 antibody (ab183143) at 1/500 dilution

Lane 1 : Human tongue tissue lysate

Lane 2 : Human laryngocarcinoma tissue lysate

Lysates/proteins at 50 µg per lane.

Secondary

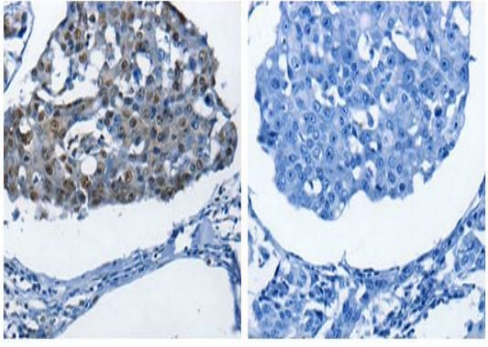
All lanes : Goat anti Rabbit IgG - H&L (HRP) at 1/10000 dilution

Developed using the ECL technique.

Predicted band size: 52 kDa

Exposure time: 1 minute

Gel: 10% SDS-PAGE



Immunohistochemistry (Formalin/PFA-fixed paraffin-embedded sections) - Anti-BPIFB1 antibody (ab183143)

Immunohistochemical analysis of paraffin-embedded Human breast cancer tissue labeling BPIFB1 with ab183143 at 1/25 dilution, in the presence (right panel) or absence (left panel) of immunizing peptide.

Please note: All products are "FOR RESEARCH USE ONLY. NOT FOR USE IN DIAGNOSTIC PROCEDURES"

Our Abpromise to you: Quality guaranteed and expert technical support

- Replacement or refund for products not performing as stated on the datasheet
- Valid for 12 months from date of delivery
- Response to your inquiry within 24 hours
- We provide support in Chinese, English, French, German, Japanese and Spanish
- Extensive multi-media technical resources to help you
- We investigate all quality concerns to ensure our products perform to the highest standards

If the product does not perform as described on this datasheet, we will offer a refund or replacement. For full details of the Abpromise, please visit <https://www.abcam.com/abpromise> or contact our technical team.

Terms and conditions

- Guarantee only valid for products bought direct from Abcam or one of our authorized distributors