

## Product datasheet

### Anti-BRCC36 antibody ab62075

[3 References](#) [3 Images](#)

#### Overview

---

<b>Product name</b>	Anti-BRCC36 antibody
<b>Description</b>	Rabbit polyclonal to BRCC36
<b>Host species</b>	Rabbit
<b>Tested applications</b>	<b>Suitable for:</b> WB, ICC/IF, IHC-P
<b>Species reactivity</b>	<b>Reacts with:</b> Human
<b>Immunogen</b>	Raised against an 18 amino acid peptide from near the amino terminus of human BRCC36.
<b>Positive control</b>	MCF7 nuclear lysate
<b>General notes</b>	<p>The Life Science industry has been in the grips of a reproducibility crisis for a number of years. Abcam is leading the way in addressing this with our range of recombinant monoclonal antibodies and knockout edited cell lines for gold-standard validation. Please check that this product meets your needs before purchasing.</p> <p>If you have any questions, special requirements or concerns, please send us an inquiry and/or contact our Support team ahead of purchase. Recommended alternatives for this product can be found below, along with publications, customer reviews and Q&amp;As</p>

#### Properties

---

<b>Form</b>	Liquid
<b>Storage instructions</b>	Shipped at 4°C. Store at +4°C.
<b>Storage buffer</b>	pH: 7.2 Preservative: 0.02% Sodium azide Constituent: PBS
<b>Purity</b>	Immunogen affinity purified
<b>Clonality</b>	Polyclonal
<b>Isotype</b>	IgG

#### Applications

---

**The Abpromise guarantee** Our **Abpromise guarantee** covers the use of ab62075 in the following tested applications. The application notes include recommended starting dilutions; optimal dilutions/concentrations should be determined by the end user.

Application	Abreviews	Notes
WB		Use a concentration of 0.5 - 1 µg/ml. Detects a band of approximately 36 kDa.
ICC/IF		Use a concentration of 20 µg/ml.
IHC-P		Use a concentration of 2.5 µg/ml.

## Target

### Function

Metalloprotease that specifically cleaves 'Lys-63'-linked polyubiquitin chains (PubMed:19214193, PubMed:20656690, PubMed:24075985, PubMed:26344097). Does not have activity toward 'Lys-48'-linked polyubiquitin chains. Component of the BRCA1-A complex, a complex that specifically recognizes 'Lys-63'-linked ubiquitinated histones H2A and H2AX at DNA lesions sites, leading to target the BRCA1-BARD1 heterodimer to sites of DNA damage at double-strand breaks (DSBs). In the BRCA1-A complex, it specifically removes 'Lys-63'-linked ubiquitin on histones H2A and H2AX, antagonizing the RNF8-dependent ubiquitination at double-strand breaks (DSBs) (PubMed:20656690). Catalytic subunit of the BRISC complex, a multiprotein complex that specifically cleaves 'Lys-63'-linked ubiquitin in various substrates (PubMed:20656690, PubMed:24075985, PubMed:26344097, PubMed:26195665). Mediates the specific 'Lys-63'-specific deubiquitination associated with the COP9 signalosome complex (CSN), via the interaction of the BRISC complex with the CSN complex (PubMed:19214193). The BRISC complex is required for normal mitotic spindle assembly and microtubule attachment to kinetochores via its role in deubiquitinating NUMA1 (PubMed:26195665). Plays a role in interferon signaling via its role in the deubiquitination of the interferon receptor IFNAR1; deubiquitination increases IFNAR1 activity by enhancing its stability and cell surface expression (PubMed:24075985, PubMed:26344097). Down-regulates the response to bacterial lipopolysaccharide (LPS) via its role in IFNAR1 deubiquitination (PubMed:24075985).

### Tissue specificity

Heart, brain, placenta, lung, liver, skeletal muscle, kidney and pancreas. Aberrantly expressed in the vast majority of breast tumors.

### Involvement in disease

A chromosomal aberration involving BRCC3 is a cause of pro-lymphocytic T-cell leukemia (T-PLL). Translocation t(X;14)(q28;q11) with TCRA.

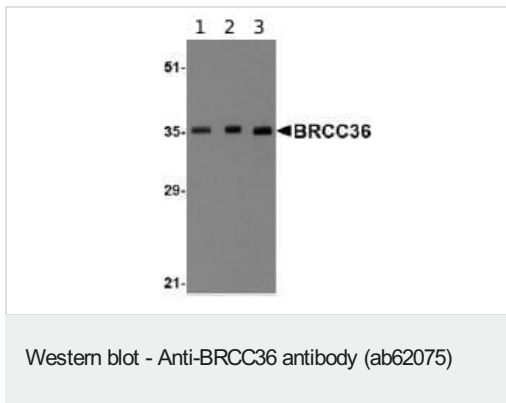
### Sequence similarities

Belongs to the peptidase M67A family. BRCC36 subfamily. Contains 1 MPN (JAB/Mov34) domain.

### Cellular localization

Nucleus. Cytoplasm. Cytoplasm, cytoskeleton, spindle pole. Localizes at sites of DNA damage at double-strand breaks (DSBs) (PubMed:20656690, PubMed:26344097). Interaction with FAM175B/ABRO1 retains BRCC3 in the cytoplasm (PubMed:20656690).

## Images



**Lane 1** : Anti-BRCC36 antibody (ab62075) at 0.5 µg/ml

**Lane 2** : Anti-BRCC36 antibody (ab62075) at 1 µg/ml

**Lane 3** : Anti-BRCC36 antibody (ab62075) at 2 µg/ml

**All lanes** : MCF7 cell lysate

Lysates/proteins at 10 µg per lane.

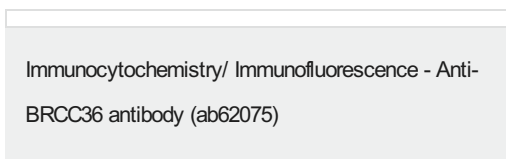
**Secondary**

**All lanes** : anti-rabbit IgG

**Observed band size:** 36 kDa



ab62075 at 2.5 µg/ml staining BRCC36 in human brain tissue section by Immunohistochemistry (Formalin/ PFA fixed paraffin-embedded sections).



Immunofluorescence of BRCC36 in Human Brain cells using ab62075 at 20 µg/ml.

**Please note:** All products are "FOR RESEARCH USE ONLY. NOT FOR USE IN DIAGNOSTIC PROCEDURES"

### Our Abpromise to you: Quality guaranteed and expert technical support

- Replacement or refund for products not performing as stated on the datasheet
- Valid for 12 months from date of delivery
- Response to your inquiry within 24 hours
- We provide support in Chinese, English, French, German, Japanese and Spanish
- Extensive multi-media technical resources to help you

- We investigate all quality concerns to ensure our products perform to the highest standards

If the product does not perform as described on this datasheet, we will offer a refund or replacement. For full details of the Abpromise, please visit <https://www.abcam.com/abpromise> or contact our technical team.

#### **Terms and conditions**

---

- Guarantee only valid for products bought direct from Abcam or one of our authorized distributors