


## Product datasheet

# Anti-Brd4 antibody ab75898

KO VALIDATED

★★★★☆ 4 Abreviews 27 References 4 Images

### Overview

<b>Product name</b>	Anti-Brd4 antibody
<b>Description</b>	Rabbit polyclonal to Brd4
<b>Host species</b>	Rabbit
<b>Tested applications</b>	<b>Suitable for:</b> ICC/IF, WB
<b>Species reactivity</b>	<b>Reacts with:</b> Mouse, Rat, Human <b>Predicted to work with:</b> Horse, Dog 
<b>Immunogen</b>	Synthetic peptide corresponding to Human Brd4 aa 1100-1200 conjugated to keyhole limpet haemocyanin. (Peptide available as <b>ab85811</b> )
<b>Positive control</b>	WB: HAP1 and HeLa cell lysates; Mouse and rat liver tissue lysates. ICC/IF: MCF7 cells.
<b>General notes</b>	<p><i>"Note: Batches of this product that have a concentration &lt; 1mg/ml may have BSA added as a stabilising agent. If you would like information about the formulation of a specific lot, please contact our scientific support team who will be happy to help."</i></p> <p>The Life Science industry has been in the grips of a reproducibility crisis for a number of years. Abcam is leading the way in addressing this with our range of recombinant monoclonal antibodies and knockout edited cell lines for gold-standard validation. Please check that this product meets your needs before purchasing.</p> <p>If you have any questions, special requirements or concerns, please send us an inquiry and/or contact our Support team ahead of purchase. Recommended alternatives for this product can be found below, along with publications, customer reviews and Q&amp;As</p>

### Properties

<b>Form</b>	Liquid
<b>Storage instructions</b>	Shipped at 4°C. Store at +4°C short term (1-2 weeks). Upon delivery aliquot. Store at -20°C or -80°C. Avoid freeze / thaw cycle.
<b>Storage buffer</b>	pH: 7.40 Preservative: 0.02% Sodium azide Constituent: PBS

Batches of this product that have a concentration < 1mg/ml may have BSA added as a stabilising agent. If you would like information about the formulation of a specific lot, please contact our scientific support team who will be happy to help.

<b>Purity</b>	Immunogen affinity purified
<b>Clonality</b>	Polyclonal
<b>Isotype</b>	IgG

## Applications

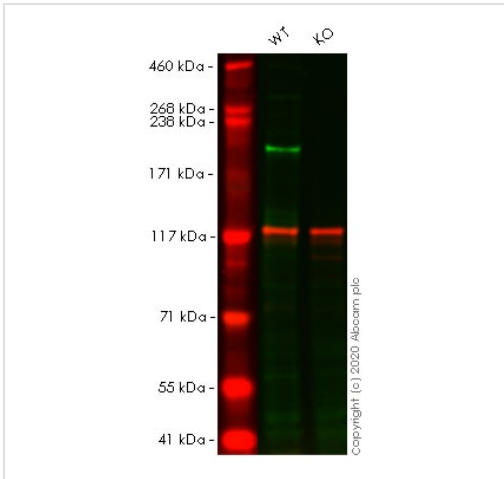
**The Abpromise guarantee** Our **Abpromise guarantee** covers the use of ab75898 in the following tested applications. The application notes include recommended starting dilutions; optimal dilutions/concentrations should be determined by the end user.

Application	Abreviews	Notes
ICC/IF	★★★★★ (1)	Use a concentration of 5 µg/ml.
WB	★☆☆☆☆ (1)	Use a concentration of 1 µg/ml. Detects a band of approximately 152 kDa (predicted molecular weight: 152 kDa).

## Target

<b>Function</b>	Plays a role in a process governing chromosomal dynamics during mitosis.
<b>Tissue specificity</b>	Ubiquitously expressed.
<b>Involvement in disease</b>	Note=A chromosomal aberration involving BRD4 is found in a rare, aggressive, and lethal carcinoma arising in midline organs of young people. Translocation t(15;19)(q14;p13) with NUT which produces a BRD4-NUT fusion protein.
<b>Sequence similarities</b>	Contains 2 bromo domains.
<b>Cellular localization</b>	Nucleus.

## Images



Western blot - Anti-Brd4 antibody (ab75898)

**All lanes :** Anti-Brd4 antibody (ab75898) at 1 µg/ml

**Lane 1 :** Wild-type HAP1 cell lysate

**Lane 2 :** BRD4 knockout HAP1 cell lysate

Lysates/proteins at 20 µg per lane.

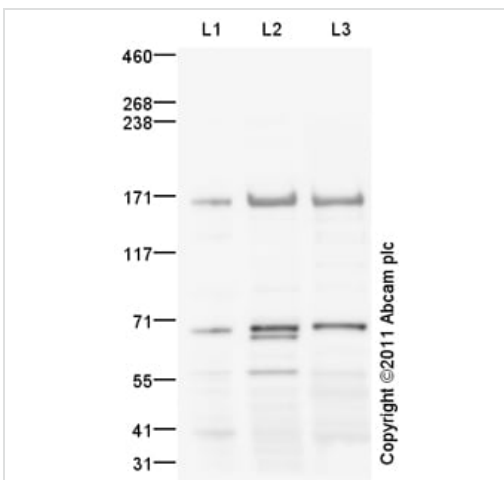
Performed under reducing conditions.

**Predicted band size:** 152 kDa

**Observed band size:** 220 kDa

**Lanes 1 - 2:** Merged signal (red and green). Green - ab75898 observed at 220 kDa. Red - loading control Mouse anti Vinculin observed at 125 kDa.

ab75898 was shown to react with Brd4 in HAP1 wild-type cells in Western blot with loss of signal observed in BRD4 knockout sample. Wild-type HAP1 and BRD4 knockout cell lysates were subjected to SDS-PAGE. Membranes were blocked in 3 % milk in TBS-T (0.1 % Tween®) before incubation with ab75898 and Mouse anti Vinculin overnight at 4 °C at 1 µg/ml and a 1 in 20000 dilution respectively. Blots were incubated with Goat anti-Rabbit IgG H&L (IRDye® 800CW) preabsorbed ([ab216773](#)) and Goat anti-Mouse IgG H&L (IRDye® 680RD) preabsorbed ([ab216776](#)) secondary antibodies at 1 in 20000 dilution for 1 h at room temperature before imaging.



Western blot - Anti-Brd4 antibody (ab75898)

**All lanes :** Anti-Brd4 antibody (ab75898) at 1 µg/ml

**Lane 1 :** Liver (Mouse) Tissue Lysate

**Lane 2 :** Liver (Rat) Tissue Lysate

**Lane 3 :** Human liver tissue lysate - total protein ([ab29889](#))

Lysates/proteins at 10 µg/ml per lane.

### Secondary

**All lanes :** Goat polyclonal to Rabbit IgG - H&L - Pre-Adsorbed (HRP)

Developed using the ECL technique.

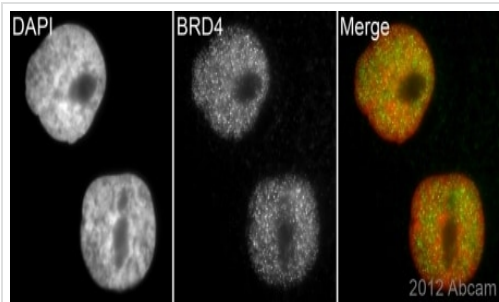
Performed under reducing conditions.

**Predicted band size:** 152 kDa

**Observed band size:** 171 kDa

**Additional bands at:** 70 kDa. We are unsure as to the identity of these extra bands.

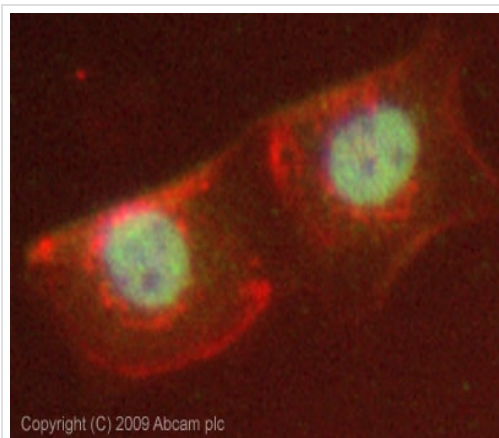
**Exposure time:** 150 seconds



ab75898 (1/500) staining Brd4 in HeLa cells (green). Cells were fixed in paraformaldehyde, permeabilized with 0.5% Triton X-100/PBS and counterstained with DAPI in order to highlight the nucleus (red). For further experimental details please refer to Abreview.

Immunocytochemistry/ Immunofluorescence - Anti-Brd4 antibody (ab75898)

Image courtesy of an Abreview submitted by Dr. Kirk McManus, Univ. of Manitoba/Cancer Care MICB, Canada



ICC/IF image of ab75898 stained MCF7 cells. The cells were 4% PFA fixed (10 min) and then incubated in 1%BSA / 10% normal goat serum / 0.3M glycine in 0.1% PBS-Tween for 1h to permeabilise the cells and block non-specific protein-protein interactions. The cells were then incubated with the antibody (ab75898, 5µg/ml) overnight at +4°C. The secondary antibody (green) was Alexa Fluor® 488 goat anti-rabbit IgG (H+L) used at a 1/1000 dilution for 1h. Alexa Fluor® 594 WGA was used to label plasma membranes (red) at a 1/200 dilution for 1h. DAPI was used to stain the cell nuclei (blue) at a concentration of 1.43µM. This antibody also gave a positive result in 4% PFA fixed (10 min) HeLa, Hek293 and HepG2 cells at 5µg/ml.

Immunocytochemistry/ Immunofluorescence - Anti-Brd4 antibody (ab75898)

**Please note:** All products are "FOR RESEARCH USE ONLY. NOT FOR USE IN DIAGNOSTIC PROCEDURES"

#### Our Abpromise to you: Quality guaranteed and expert technical support

- Replacement or refund for products not performing as stated on the datasheet
- Valid for 12 months from date of delivery
- Response to your inquiry within 24 hours
- We provide support in Chinese, English, French, German, Japanese and Spanish

- Extensive multi-media technical resources to help you
- We investigate all quality concerns to ensure our products perform to the highest standards

If the product does not perform as described on this datasheet, we will offer a refund or replacement. For full details of the Abpromise, please visit <https://www.abcam.com/abpromise> or contact our technical team.

### **Terms and conditions**

---

- Guarantee only valid for products bought direct from Abcam or one of our authorized distributors