


Product datasheet

Anti-BSCL2/Seipin antibody ab106793

★★★★★ [1 Abreviews](#) [8 References](#) [3 Images](#)

Overview

Product name	Anti-BSCL2/Seipin antibody
Description	Rabbit polyclonal to BSCL2/Seipin
Host species	Rabbit
Tested applications	Suitable for: WB, IHC-P
Species reactivity	Reacts with: Mouse, Rat, Human Predicted to work with: Cow, Dog, Pig, Chimpanzee, Macaque monkey, Gorilla, Orangutan 
Immunogen	Synthetic peptide corresponding to Human BSCL2/Seipin aa 50-150 conjugated to keyhole limpet haemocyanin. (Peptide available as ab125933)
Positive control	WB: Human, mouse and rat brain; Mouse and rat testis lysate. IHC-P: Human testis tissue.
General notes	<p>The Life Science industry has been in the grips of a reproducibility crisis for a number of years. Abcam is leading the way in addressing this with our range of recombinant monoclonal antibodies and knockout edited cell lines for gold-standard validation. Please check that this product meets your needs before purchasing.</p> <p>If you have any questions, special requirements or concerns, please send us an inquiry and/or contact our Support team ahead of purchase. Recommended alternatives for this product can be found below, along with publications, customer reviews and Q&As</p>

Properties

Form	Liquid
Storage instructions	Shipped at 4°C. Store at +4°C short term (1-2 weeks). Upon delivery aliquot. Store at -20°C or -80°C. Avoid freeze / thaw cycle.
Storage buffer	pH: 7.40 Preservative: 0.02% Sodium azide Constituent: PBS

Batches of this product that have a concentration < 1mg/ml may have BSA added as a stabilising agent. If you would like information about the formulation of a specific lot, please contact our scientific support team who will be happy to help.

Purity	Immunogen affinity purified
Clonality	Polyclonal
Isotype	IgG

Applications

The Abpromise guarantee Our **Abpromise guarantee** covers the use of ab106793 in the following tested applications. The application notes include recommended starting dilutions; optimal dilutions/concentrations should be determined by the end user.

Application	Abreviews	Notes
WB	★★★★★ (1)	Use a concentration of 1 µg/ml. Detects a band of approximately 46 kDa (predicted molecular weight: 44 kDa).
IHC-P		Use a concentration of 5 µg/ml.

Target

Tissue specificity Highest expression in brain and testis.

Involvement in disease Defects in BSCL2 are the cause of congenital generalized lipodystrophy type 2 (CGL2) [MIM:269700]. Congenital generalized lipodystrophy is an autosomal recessive disorder characterized by a near absence of adipose tissue, extreme insulin resistance, hypertriglyceridemia, hepatic steatosis and early onset of diabetes.

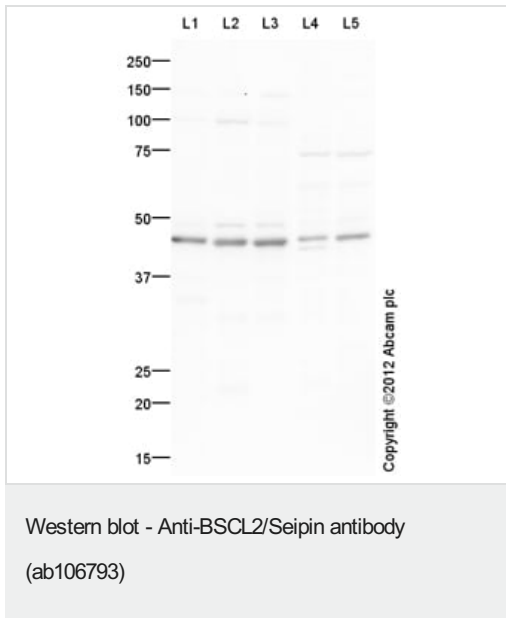
Defects in BSCL2 are the cause of spastic paraplegia type 17 (SPG17) [MIM:270685]; also known as Silver spastic paraplegia syndrome. Spastic paraplegia is a neurodegenerative disorder characterized by a slow, gradual, progressive weakness and spasticity of the lower limbs. SPG17 is characterized by prominent amyotrophy of the hand muscles, the presence of mild to severe pyramidal tract signs, and spastic paraplegia. SPG17 is a motor neuron disease overlapping with distal spinal muscular atrophy type 5.

Defects in BSCL2 are a cause of distal hereditary motor neuropathy type 5 (HMN5) [MIM:600794]; also known as distal hereditary motor neuropathy type V (DSMAV). HMN5 is an autosomal dominant disorder characterized by degeneration of motor nerve fibers, predominantly in limb distal regions.

Sequence similarities Belongs to the seipin family.

Cellular localization Endoplasmic reticulum membrane.

Images



All lanes : Anti-BSCL2/Seipin antibody (ab106793) at 1 µg/ml

Lane 1 : Human brain tissue lysate - total protein ([ab29466](#))

Lane 2 : Brain (Mouse) Tissue Lysate

Lane 3 : Brain (Rat) Tissue Lysate

Lane 4 : Testis (Mouse) Tissue Lysate

Lane 5 : Testis (Rat) Tissue Lysate

Lysates/proteins at 10 µg per lane.

Secondary

All lanes : Goat Anti-Rabbit IgG H&L (HRP) preadsorbed ([ab97080](#)) at 1/5000 dilution

Developed using the ECL technique.

Performed under reducing conditions.

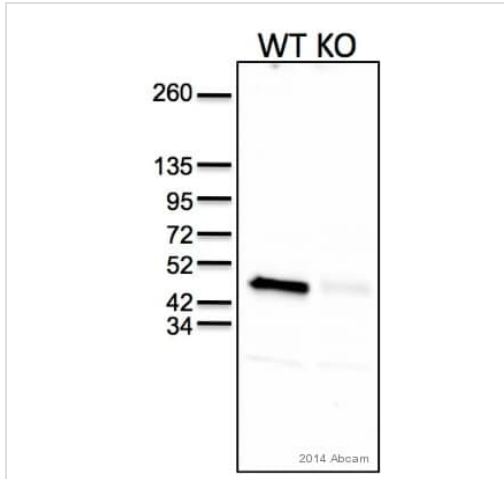
Predicted band size: 44 kDa

Observed band size: 46 kDa

Additional bands at: 100 kDa, 75 kDa. We are unsure as to the identity of these extra bands.

Exposure time: 3 minutes

BSCL2/Seipin contains a number of potential glycosylation sites (SwissProt) which may explain its migration at a higher molecular weight than predicted.



Western blot - Anti-BSCL2/Seipin antibody (ab106793)

This image is courtesy of an Abreview submitted by Xavier Prieur

All lanes : Anti-BSCL2/Seipin antibody (ab106793) at 1/1000 dilution

Lane 1 : Wild type mouse white adipose tissue lysate (whole)

Lane 2 : Knockout mouse white adipose tissue lysate (whole)

Lysates/proteins at 50 µg per lane.

Secondary

All lanes : HRP-conjugated goat anti-rabbit IgG polyclonal

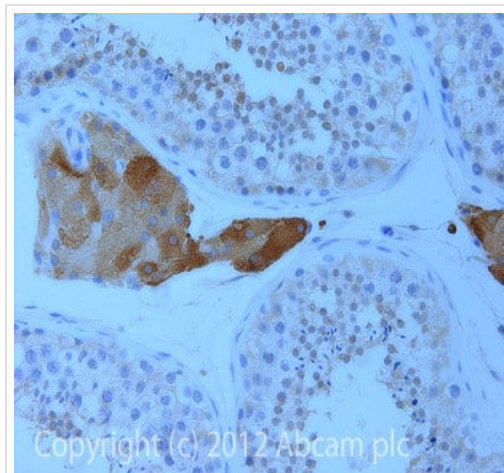
Developed using the ECL technique.

Performed under reducing conditions.

Predicted band size: 44 kDa

Observed band size: 48 kDa

Exposure time: 5 seconds



Immunohistochemistry (Formalin/PFA-fixed paraffin-embedded sections) - Anti-BSCL2/Seipin antibody (ab106793)

IHC image of BSCL2/Seipin staining in human normal testis formalin fixed paraffin embedded tissue section, performed on a Leica Bond™ system using the standard protocol F. The section was pre-treated using heat mediated antigen retrieval with EDTA (pH9, epitope retrieval solution 2) for 20 mins. The section was then incubated with ab106793, 5µg/ml, for 15 mins at room temperature and detected using an HRP conjugated compact polymer system. DAB was used as the chromogen. The section was then counterstained with haematoxylin and mounted with DPX.

For other IHC staining systems (automated and non-automated) customers should optimize variable parameters such as antigen retrieval conditions, primary antibody concentration and antibody incubation times.

Our Abpromise to you: Quality guaranteed and expert technical support

- Replacement or refund for products not performing as stated on the datasheet
- Valid for 12 months from date of delivery
- Response to your inquiry within 24 hours

- We provide support in Chinese, English, French, German, Japanese and Spanish
- Extensive multi-media technical resources to help you
- We investigate all quality concerns to ensure our products perform to the highest standards

If the product does not perform as described on this datasheet, we will offer a refund or replacement. For full details of the Abpromise, please visit <https://www.abcam.com/abpromise> or contact our technical team.

Terms and conditions

- Guarantee only valid for products bought direct from Abcam or one of our authorized distributors