

## Product datasheet

### Anti-BSD antibody ab38307

★★★★★ [2 Abreviews](#) [2 References](#) [2 Images](#)

#### Overview

<b>Product name</b>	Anti-BSD antibody
<b>Description</b>	Rabbit polyclonal to BSD
<b>Host species</b>	Rabbit
<b>Specificity</b>	The antibody detects a 13 kDa protein corresponding to the molecular mass of Bsd on SDS-PAGE immunoblots of 293 cells transfected with a lentiviral vector that expresses the Bsd gene product, but is not detected in mock transfected cells.
<b>Tested applications</b>	<b>Suitable for:</b> WB, ELISA, ICC/IF
<b>Species reactivity</b>	<b>Reacts with:</b> Aspergillus terreus
<b>Immunogen</b>	Synthetic peptide corresponding to BSD (N terminal) conjugated to keyhole limpet haemocyanin. Aspergillus terreus Database link: <a href="#">P0C2P0</a>
<b>General notes</b>	<p>The Life Science industry has been in the grips of a reproducibility crisis for a number of years. Abcam is leading the way in addressing this with our range of recombinant monoclonal antibodies and knockout edited cell lines for gold-standard validation. Please check that this product meets your needs before purchasing.</p> <p>If you have any questions, special requirements or concerns, please send us an inquiry and/or contact our Support team ahead of purchase. Recommended alternatives for this product can be found below, along with publications, customer reviews and Q&amp;As</p>

#### Properties

<b>Form</b>	Liquid
<b>Storage instructions</b>	Shipped at 4°C. Upon delivery aliquot and store at -20°C. Avoid freeze / thaw cycles.
<b>Storage buffer</b>	Preservative: 0.05% Sodium azide Constituents: 0.1% BSA, 50% Glycerol, PBS
<b>Purity</b>	Immunogen affinity purified
<b>Purification notes</b>	This antibody was affinity purified using the N-terminal Bsd peptide (without carrier).
<b>Clonality</b>	Polyclonal
<b>Isotype</b>	IgG

## Applications

### The Abpromise guarantee

Our **Abpromise guarantee** covers the use of ab38307 in the following tested applications.

The application notes include recommended starting dilutions; optimal dilutions/concentrations should be determined by the end user.

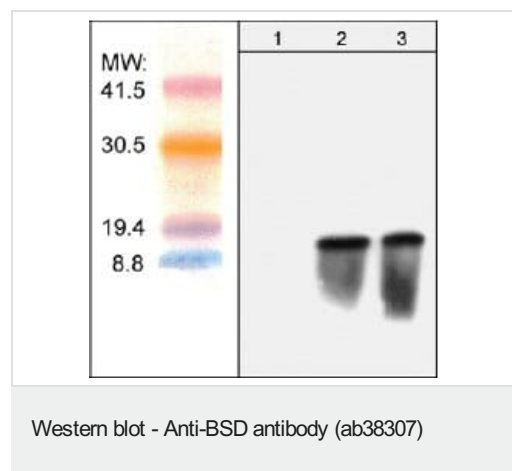
Application	Abreviews	Notes
WB	★★★★★ (1)	1/1000. Detects a band of approximately 13 kDa.
ELISA		1/2000.
ICC/IF		1/100.

## Target

### Relevance

Retroviral vectors are commonly used for gene expression in vitro and in vivo. The structure of these vectors usually consists of one gene of interest and a selectable marker gene. Fast selection without damaging cells is a critical step for significant gene expression. Blastidicin S deaminase (Bsd) isolated from *Bacillus cereus* has a neutralizing action on the highly toxic antibiotic blastidicin. A variety of commercially available retroviral vectors, such as lentiviral expression systems, utilize Bsd expression for selection using blastidicin. This selectable marker allows selection of stable mammalian cell lines in as little as one week.

## Images



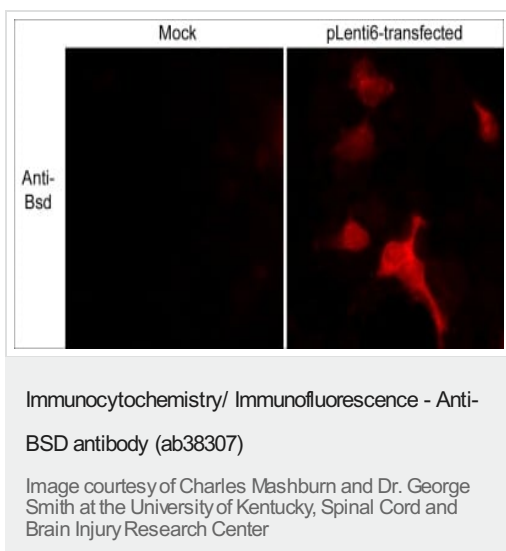
**All lanes :** Anti-BSD antibody (ab38307)

**Lane 1 :** 293 cells mock transfected

**Lanes 2-3 :** 293 cells transiently transfected with pLenti6/TR lentiviral vector

**Observed band size:** 13 kDa

Each lane was loaded with 10-20µg total protein.



ab38307, staining BSD in 293 cells mock transfected (left) and transiently transfected with pLenti6/TR lentiviral vector (right). The cells were fixed in paraformaldehyde (3.75%) for 30 min., then permeabilized in 0.2% Triton X-100 for 15 min. Blocking was done using 1% BSA for 30 min. The primary was used at 1/100 and then an appropriate secondary antibody conjugated to Texas Red was used.

**Please note:** All products are "FOR RESEARCH USE ONLY. NOT FOR USE IN DIAGNOSTIC PROCEDURES"

### Our Abpromise to you: Quality guaranteed and expert technical support

- Replacement or refund for products not performing as stated on the datasheet
- Valid for 12 months from date of delivery
- Response to your inquiry within 24 hours
- We provide support in Chinese, English, French, German, Japanese and Spanish
- Extensive multi-media technical resources to help you
- We investigate all quality concerns to ensure our products perform to the highest standards

If the product does not perform as described on this datasheet, we will offer a refund or replacement. For full details of the Abpromise, please visit <https://www.abcam.com/abpromise> or contact our technical team.

### Terms and conditions

- Guarantee only valid for products bought direct from Abcam or one of our authorized distributors