

## Product datasheet

# Anti-BSND antibody ab238741

2 Images

### Overview

---

|                            |   |
|----------------------------|---|
| <b>Product name</b>        | Anti-BSND antibody  |
| <b>Description</b>         | Rabbit polyclonal to BSND   |
| <b>Host species</b>        | Rabbit  |
| <b>Tested applications</b> | <b>Suitable for:</b> IHC-P  |
| <b>Species reactivity</b>  | <b>Reacts with:</b> Human   |
| <b>Immunogen</b>           | Recombinant fragment corresponding to Human BSND aa 50 to the C-terminus.<br>Database link: <a href="#">Q8WZ55</a><br><a href="#">Run BLAST with</a> <a href="#">Run BLAST with</a>   |
| <b>Positive control</b>    | IHC-P: Human breast cancer and kidney tissue.   |
| <b>General notes</b>       | <p>The Life Science industry has been in the grips of a reproducibility crisis for a number of years. Abcam is leading the way in addressing this with our range of recombinant monoclonal antibodies and knockout edited cell lines for gold-standard validation. Please check that this product meets your needs before purchasing.</p> <p>If you have any questions, special requirements or concerns, please send us an inquiry and/or contact our Support team ahead of purchase. Recommended alternatives for this product can be found below, along with publications, customer reviews and Q&amp;As</p> |

### Properties

---

|                             |   |
|-----------------------------|---|
| <b>Form</b>                 | Liquid  |
| <b>Storage instructions</b> | Shipped at 4°C. Store at +4°C short term (1-2 weeks). Upon delivery aliquot. Store at -20°C long term. Avoid freeze / thaw cycle. |
| <b>Storage buffer</b>       | pH: 7.30<br>Preservative: 0.02% Sodium azide<br>Constituents: PBS, 50% Glycerol (glycerin, glycerine)                             |
| <b>Purity</b>               | Immunogen affinity purified   |
| <b>Clonality</b>            | Polyclonal  |
| <b>Isotype</b>              | IgG   |

### Applications

---

## The Abpromise guarantee

Our **Abpromise guarantee** covers the use of ab238741 in the following tested applications.

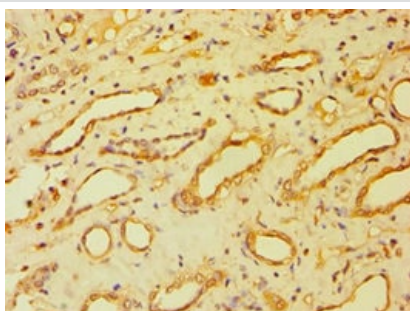
The application notes include recommended starting dilutions; optimal dilutions/concentrations should be determined by the end user.

| Application | Abreviews | Notes         |
|-------------|-----------|---------------|
| IHC-P       |           | 1/20 - 1/200. |

## Target

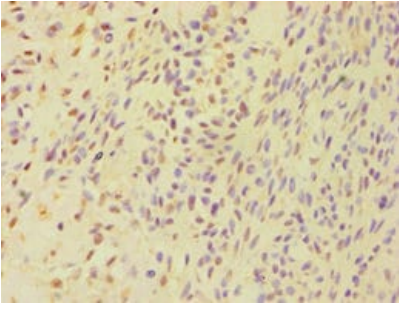
|                               |   |
|-------------------------------|---|
| <b>Function</b>               | Functions as a beta-subunit for CLCNKA and CLCNKB chloride channels. In the kidney CLCNK/BSND heteromers mediate chloride reabsorption by facilitating its basolateral efflux. In the stria, CLCNK/BSND channels drive potassium secretion by recycling chloride for the basolateral SLC12A2 cotransporter. |
| <b>Tissue specificity</b>     | Expressed primarily in kidney. Expressed in specific nephron segments and in the stria vascularis of the inner ear.   |
| <b>Involvement in disease</b> | Bartter syndrome 4A   |
| <b>Cellular localization</b>  | Cell membrane. Cytoplasm. A significant amount also observed intracellularly. Staining in membranes of the renal tubule and of potassium-secreting epithelia of the inner ear is basolateral.   |

## Images



Paraffin-embedded human kidney tissue stained for BSND using ab238741 at 1/100 dilution in immunohistochemical analysis.

Immunohistochemistry (Formalin/PFA-fixed paraffin-embedded sections) - Anti-BSND antibody (ab238741)



Paraffin-embedded human breast cancer tissue stained for BSND using ab238741 at 1/100 dilution in immunohistochemical analysis.

Immunohistochemistry (Formalin/PFA-fixed paraffin-embedded sections) - Anti-BSND antibody (ab238741)

**Please note:** All products are "FOR RESEARCH USE ONLY. NOT FOR USE IN DIAGNOSTIC PROCEDURES"

### **Our Abpromise to you: Quality guaranteed and expert technical support**

---

- Replacement or refund for products not performing as stated on the datasheet
- Valid for 12 months from date of delivery
- Response to your inquiry within 24 hours
- We provide support in Chinese, English, French, German, Japanese and Spanish
- Extensive multi-media technical resources to help you
- We investigate all quality concerns to ensure our products perform to the highest standards

If the product does not perform as described on this datasheet, we will offer a refund or replacement. For full details of the Abpromise, please visit <https://www.abcam.com/abpromise> or contact our technical team.

### **Terms and conditions**

---

- Guarantee only valid for products bought direct from Abcam or one of our authorized distributors