

## Product datasheet

# Anti-BTF antibody [EPR9981] ab155965

Recombinant RabMAb

3 Images

### Overview

---

<b>Product name</b>	Anti-BTF antibody [EPR9981]
<b>Description</b>	Rabbit monoclonal [EPR9981] to BTF
<b>Host species</b>	Rabbit
<b>Tested applications</b>	<b>Suitable for:</b> Flow Cyt (Intra), WB <b>Unsuitable for:</b> ICC/IF, IHC-P or IP
<b>Species reactivity</b>	<b>Reacts with:</b> Human
<b>Immunogen</b>	Synthetic peptide. This information is proprietary to Abcam and/or its suppliers.
<b>Positive control</b>	Jurkat, K562 or MCF-7 lysate, permeabilized K562 cells.
<b>General notes</b>	<p>This product is a recombinant monoclonal antibody, which offers several advantages including:</p> <ul style="list-style-type: none"><li>- High batch-to-batch consistency and reproducibility</li><li>- Improved sensitivity and specificity</li><li>- Long-term security of supply</li><li>- Animal-free production</li></ul> <p>For more information <a href="#">see here</a>.</p> <p>Our RabMAb<sup>®</sup> technology is a patented hybridoma-based technology for making rabbit monoclonal antibodies. For details on our patents, please refer to <a href="#">RabMAb<sup>®</sup> patents</a>.</p> <p>Mouse, Rat: We have preliminary internal testing data to indicate this antibody may not react with these species. Please contact us for more information.</p>

### Properties

---

<b>Form</b>	Liquid
<b>Storage instructions</b>	Shipped at 4°C. Upon delivery aliquot and store at -20°C. Avoid freeze / thaw cycles.
<b>Storage buffer</b>	pH: 7.2 Preservative: 0.01% Sodium azide Constituents: 9% PBS, 40% Glycerol (glycerin, glycerine), 0.05% BSA, 50% Tissue culture supernatant
<b>Purity</b>	Tissue culture supernatant
<b>Clonality</b>	Monoclonal

Clone number EPR9981

Isotype IgG

## Applications

**The Abpromise guarantee** Our **Abpromise guarantee** covers the use of ab155965 in the following tested applications.

The application notes include recommended starting dilutions; optimal dilutions/concentrations should be determined by the end user.

Application	Abreviews	Notes
Flow Cyt (Intra)		1/100 - 1/500. <b>ab172730</b> - Rabbit monoclonal IgG, is suitable for use as an isotype control with this antibody.
WB		1/1000 - 1/10000. Predicted molecular weight: 106 kDa.

**Application notes** Is unsuitable for ICC/IF, IHC-P or IP.

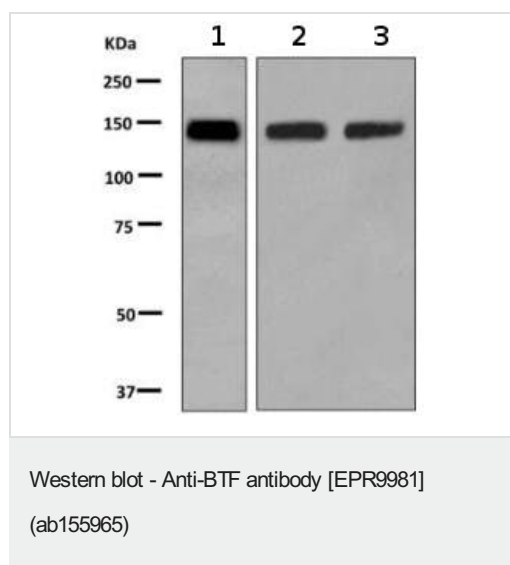
## Target

**Function** Death-promoting transcriptional repressor.

**Tissue specificity** Ubiquitous.

**Cellular localization** Cytoplasm. Nucleus.

## Images



**All lanes** : Anti-BTF antibody [EPR9981] (ab155965) at 1/1000 dilution

**Lane 1** : Jurkat cell lysate

**Lane 2** : K562 cell lysate

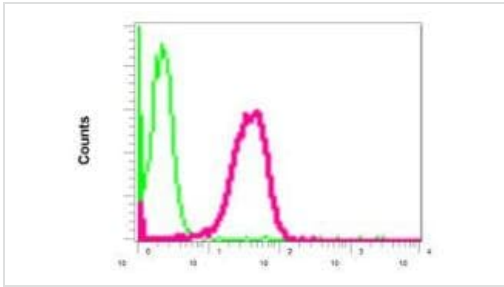
**Lane 3** : MCF-7 cell lysate

Lysates/proteins at 10 µg per lane.

### Secondary

**All lanes** : HRP labelled goat anti-rabbit at 1/2000 dilution





**Predicted band size:** 106 kDa



Intracellular Flow Cytometry analysis of permeabilized K562 cells using ab155965 at a 1/100 dilution (red) or a rabbit IgG (negative) (green).

Flow Cytometry (Intracellular) - Anti-BTF antibody [EPR9981] (ab155965)

Why choose a recombinant antibody?

 <p><b>Research with confidence</b> Consistent and reproducible results</p>	 <p><b>Long-term and scalable supply</b> Recombinant technology</p>
 <p><b>Success from the first experiment</b> Confirmed specificity</p>	 <p><b>Ethical standards compliant</b> Animal-free production</p>

Anti-BTF antibody [EPR9981] (ab155965)

**Please note:** All products are "FOR RESEARCH USE ONLY. NOT FOR USE IN DIAGNOSTIC PROCEDURES"

### Our Abpromise to you: Quality guaranteed and expert technical support

- Replacement or refund for products not performing as stated on the datasheet
- Valid for 12 months from date of delivery
- Response to your inquiry within 24 hours
- We provide support in Chinese, English, French, German, Japanese and Spanish
- Extensive multi-media technical resources to help you
- We investigate all quality concerns to ensure our products perform to the highest standards

If the product does not perform as described on this datasheet, we will offer a refund or replacement. For full details of the Abpromise, please visit <https://www.abcam.com/abpromise> or contact our technical team.

### Terms and conditions

- Guarantee only valid for products bought direct from Abcam or one of our authorized distributors