

Product datasheet

Anti-BTG1 antibody [2095C1 α] ab50991

★★★★★ [2 Abreviews](#) [2 References](#) [1 Image](#)

Overview

Product name	Anti-BTG1 antibody [2095C1 α]
Description	Mouse monoclonal [2095C1 α] to BTG1
Host species	Mouse
Specificity	ab50991 has not yet been tested on endogenous protein in cell lysate.
Tested applications	Suitable for: WB
Species reactivity	Reacts with: Recombinant fragment
Immunogen	Recombinant fragment of BTG1 (Human)
General notes	<p>The Life Science industry has been in the grips of a reproducibility crisis for a number of years. Abcam is leading the way in addressing this with our range of recombinant monoclonal antibodies and knockout edited cell lines for gold-standard validation. Please check that this product meets your needs before purchasing.</p> <p>If you have any questions, special requirements or concerns, please send us an inquiry and/or contact our Support team ahead of purchase. Recommended alternatives for this product can be found below, along with publications, customer reviews and Q&As</p>

Properties

Form	Liquid
Storage instructions	Shipped at 4°C. Store at 4°C (stable for up to 12 months). Store at -20°C or -80°C.
Storage buffer	<p>pH: 7.40</p> <p>Preservative: 0.05% Sodium azide</p> <p>Constituents: 1% BSA, PBS</p>
Purity	Protein G purified
Purification notes	Purified using protein G column chromatography from culture supernatant of hybridoma cultured in a medium containing bovine IgG depleted (approximately 95%) fetal bovine serum.
Clonality	Monoclonal
Clone number	2095C1 α
Isotype	IgG1

Applications

Applications

The Abpromise guarantee

Our **Abpromise guarantee** covers the use of ab50991 in the following tested applications.

The application notes include recommended starting dilutions; optimal dilutions/concentrations should be determined by the end user.

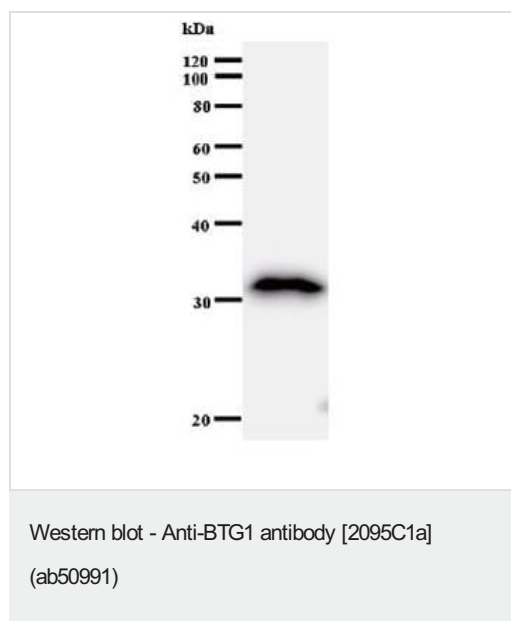
Application	Abreviews	Notes
WB	★★★★★ (1)	Use at an assay dependent concentration. Predicted molecular weight: 19 kDa.

Target

Relevance

BTG1 belongs to the BTG family of proteins. FUNCTION: Anti-proliferative protein. Its expression is associated with the early G1 phase of the cell cycle. A chromosomal aberration involving BTG1 may be a cause of a form of B cell chronic lymphocytic leukemia; translocation t(8;12)(q24;q22) with MYC.

Images



Anti-BTG1 antibody [2095C1a] (ab50991) + Recombinant protein fragment

Predicted band size: 19 kDa

Observed band size: 31 kDa

Please note: All products are "FOR RESEARCH USE ONLY. NOT FOR USE IN DIAGNOSTIC PROCEDURES"

Our Abpromise to you: Quality guaranteed and expert technical support

- Replacement or refund for products not performing as stated on the datasheet
- Valid for 12 months from date of delivery
- Response to your inquiry within 24 hours
- We provide support in Chinese, English, French, German, Japanese and Spanish
- Extensive multi-media technical resources to help you
- We investigate all quality concerns to ensure our products perform to the highest standards

If the product does not perform as described on this datasheet, we will offer a refund or replacement. For full details of the Abpromise, please visit <https://www.abcam.com/abpromise> or contact our technical team.

Terms and conditions

- Guarantee only valid for products bought direct from Abcam or one of our authorized distributors