

Product datasheet

Anti-BTN2A2/BTF2 antibody [6C7D2] ab233763

[5 Images](#)

Overview

Product name	Anti-BTN2A2/BTF2 antibody [6C7D2]
Description	Mouse monoclonal [6C7D2] to BTN2A2/BTF2
Host species	Mouse
Tested applications	Suitable for: WB, IHC-P, Flow Cyt
Species reactivity	Reacts with: Human
Immunogen	Recombinant fragment corresponding to Human BTN2A2/BTF2 aa 57-237. (Expressed in E.coli). Database link: Q8WV5
Positive control	WB: Recombinant human BTN2A2/BTF2 protein; BTN2A2/BTF2 (AA: extra 57-237)-hlgFc transfected HEK-293 cell lysate. Flow: HeLa cells. IHC-P: Cervical cancer and bladder cancer tissue.
General notes	<p>The Life Science industry has been in the grips of a reproducibility crisis for a number of years. Abcam is leading the way in addressing this with our range of recombinant monoclonal antibodies and knockout edited cell lines for gold-standard validation. Please check that this product meets your needs before purchasing.</p> <p>If you have any questions, special requirements or concerns, please send us an inquiry and/or contact our Support team ahead of purchase. Recommended alternatives for this product can be found below, along with publications, customer reviews and Q&As</p>

Properties

Form	Liquid
Storage instructions	Shipped at 4°C. Store at +4°C short term (1-2 weeks). Upon delivery aliquot. Store at -20°C long term. Avoid freeze / thaw cycle.
Storage buffer	Preservative: 0.05% Sodium azide Constituent: PBS
Purity	Protein G purified
Clonality	Monoclonal
Clone number	6C7D2
Isotype	IgG1

Applications

The Abpromise guarantee Our **Abpromise guarantee** covers the use of ab233763 in the following tested applications. The application notes include recommended starting dilutions; optimal dilutions/concentrations should be determined by the end user.

Application	Abreviews	Notes
WB		1/500 - 1/2000.
IHC-P		1/200 - 1/1000.
Flow Cyt		1/200 - 1/400.

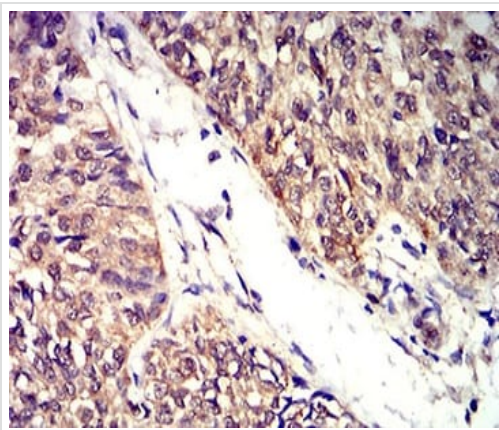
Target

Tissue specificity Highly expressed in brain, bone marrow, small intestine, muscle, spleen and pancreas. Moderate expression was seen in lung, liver and kidney.

Sequence similarities Belongs to the immunoglobulin superfamily. BTN/MOG family.
Contains 1 B30.2/SPRY domain.
Contains 1 Ig-like C2-type (immunoglobulin-like) domain.
Contains 1 Ig-like V-type (immunoglobulin-like) domain.

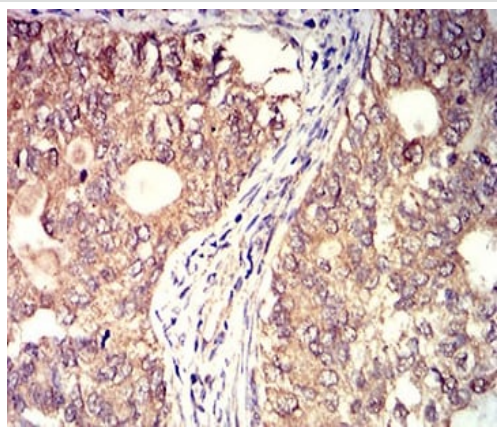
Cellular localization Membrane.

Images



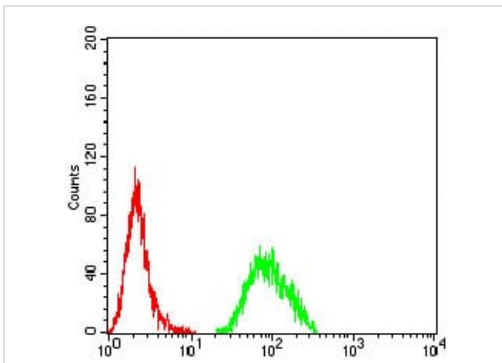
Paraffin-embedded human bladder cancer tissue stained for BTN2A2/BTF2 using ab233763 at 1/200 dilution in immunohistochemical analysis. DAB staining.

Immunohistochemistry (Formalin/PFA-fixed paraffin-embedded sections) - Anti-BTN2A2/BTF2 antibody [6C7D2] (ab233763)



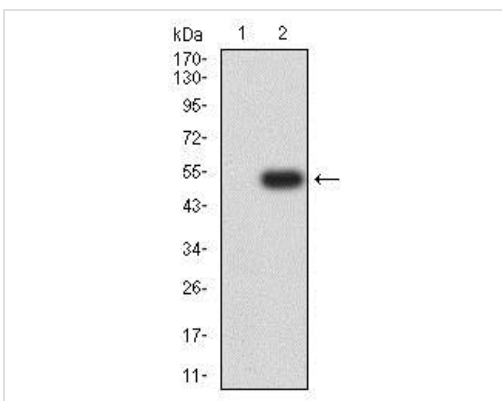
Immunohistochemistry (Formalin/PFA-fixed paraffin-embedded sections) - Anti-BTN2A2/BTF2 antibody [6C7D2] (ab233763)

Paraffin-embedded human cervical cancer tissue stained for BTN2A2/BTF2 using ab233763 at 1/200 dilution in immunohistochemical analysis. DAB staining.



Flow Cytometry - Anti-BTN2A2/BTF2 antibody [6C7D2] (ab233763)

Flow cytometric analysis of HeLa (human epithelial cell line from cervix adenocarcinoma) cells labelling BTN2A2/BTF2 using ab233763 at 1/200 dilution (green) compared to a negative control (red).



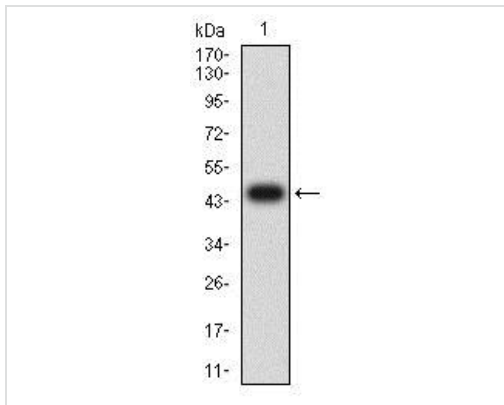
Western blot - Anti-BTN2A2/BTF2 antibody [6C7D2] (ab233763)

All lanes : Anti-BTN2A2/BTF2 antibody [6C7D2] (ab233763) at 1/500 dilution

Lane 1 : HEK-293 (human epithelial cell line from embryonic kidney) cell lysate

Lane 2 : BTN2A2/BTF2 (AA: extra 57-237)-hlgGFc transfected HEK-293 cell lysate

Developed using the ECL technique.



Anti-BTN2A2/BTF2 antibody [6C7D2] (ab233763) at 1/500 dilution
+ Recombinant human GCSF receptor (AA: extra 25-187) protein

Expected MW is 46.4 kDa.

Western blot - Anti-BTN2A2/BTF2 antibody [6C7D2]
(ab233763)

Please note: All products are "FOR RESEARCH USE ONLY. NOT FOR USE IN DIAGNOSTIC PROCEDURES"

Our Abpromise to you: Quality guaranteed and expert technical support

- Replacement or refund for products not performing as stated on the datasheet
- Valid for 12 months from date of delivery
- Response to your inquiry within 24 hours
- We provide support in Chinese, English, French, German, Japanese and Spanish
- Extensive multi-media technical resources to help you
- We investigate all quality concerns to ensure our products perform to the highest standards

If the product does not perform as described on this datasheet, we will offer a refund or replacement. For full details of the Abpromise, please visit <https://www.abcam.com/abpromise> or contact our technical team.

Terms and conditions

- Guarantee only valid for products bought direct from Abcam or one of our authorized distributors