


## Product datasheet

### Anti-BZW1/Protein Orf antibody ab85090

★★★★☆ [4 Abreviews](#) [6 References](#) [2 Images](#)

#### Overview

<b>Product name</b>	Anti-BZW1/Protein Orf antibody
<b>Description</b>	Rabbit polyclonal to BZW1/Protein Orf
<b>Host species</b>	Rabbit
<b>Tested applications</b>	<b>Suitable for:</b> WB, IHC-P
<b>Species reactivity</b>	<b>Reacts with:</b> Human <b>Predicted to work with:</b> Mouse 
<b>Immunogen</b>	Synthetic peptide corresponding to Human BZW1/Protein Orf (C terminal). (BAD96965)
<b>Positive control</b>	Lymph nodes, HeLa , HepG2 and MCF7 cell lysate
<b>General notes</b>	<p>The Life Science industry has been in the grips of a reproducibility crisis for a number of years. Abcam is leading the way in addressing this with our range of recombinant monoclonal antibodies and knockout edited cell lines for gold-standard validation. Please check that this product meets your needs before purchasing.</p> <p>If you have any questions, special requirements or concerns, please send us an inquiry and/or contact our Support team ahead of purchase. Recommended alternatives for this product can be found below, along with publications, customer reviews and Q&amp;As</p>

#### Properties

<b>Form</b>	Lyophilized:Reconstitute in 200ul sterile H <sub>2</sub> O.
<b>Storage instructions</b>	Shipped at 4°C. Upon delivery aliquot and store at -20°C. Avoid freeze / thaw cycles.
<b>Storage buffer</b>	Preservative: 0.02% Sodium azide Constituent: 0.5% BSA
<b>Purity</b>	Immunogen affinity purified
<b>Clonality</b>	Polyclonal
<b>Isotype</b>	IgG

#### Applications

The **Abpromise guarantee** Our **Abpromise guarantee** covers the use of ab85090 in the following tested applications.

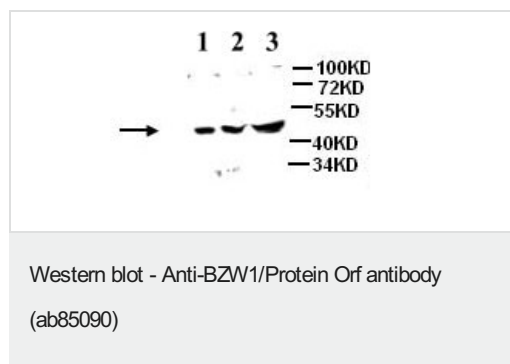
The application notes include recommended starting dilutions; optimal dilutions/concentrations should be determined by the end user.

Application	Abreviews	Notes
WB	★★★★★ (2)	1/250 - 1/1000. Predicted molecular weight: 48 kDa.
IHC-P		1/50 - 1/200.

## Target

<b>Function</b>	Enhances histone H4 gene transcription but does not seem to bind DNA directly.
<b>Sequence similarities</b>	Belongs to the BZW family. Contains 1 W2 domain.
<b>Developmental stage</b>	Expressed in day 3 embryo.

## Images



**All lanes :** Anti-BZW1/Protein Orf antibody (ab85090) at 1/500 dilution

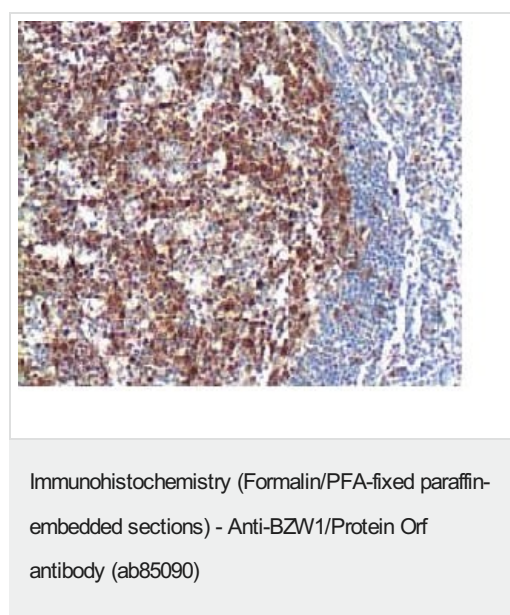
**Lane 1 :** HepG2 cell lysate

**Lane 2 :** HeLa cell lysate

**Lane 3 :** MCF7 cell lysate

**Predicted band size:** 48 kDa

**Observed band size:** 48 kDa



Immunohistochemical analysis of BZW1/Protein Orf expression in paraffin embedded formalin fixed lymph node section using 1/100 ab85090. note cytoplasmic staining.

**Please note:** All products are "FOR RESEARCH USE ONLY. NOT FOR USE IN DIAGNOSTIC PROCEDURES"

### **Our Abpromise to you: Quality guaranteed and expert technical support**

---

- Replacement or refund for products not performing as stated on the datasheet
- Valid for 12 months from date of delivery
- Response to your inquiry within 24 hours
- We provide support in Chinese, English, French, German, Japanese and Spanish
- Extensive multi-media technical resources to help you
- We investigate all quality concerns to ensure our products perform to the highest standards

If the product does not perform as described on this datasheet, we will offer a refund or replacement. For full details of the Abpromise, please visit <https://www.abcam.com/abpromise> or contact our technical team.

### **Terms and conditions**

---

- Guarantee only valid for products bought direct from Abcam or one of our authorized distributors