

### Anti-c-Jun antibody ab31367

[4 References](#) [2 Images](#)

#### Overview

|                            |   |
|----------------------------|---|
| <b>Product name</b>        | Anti-c-Jun antibody   |
| <b>Description</b>         | Rabbit polyclonal to c-Jun  |
| <b>Host species</b>        | Rabbit  |
| <b>Specificity</b>         | ab31367 detects endogenous levels of c-Jun protein around Serine 73.  |
| <b>Tested applications</b> | <b>Suitable for:</b> WB, IHC-P  |
| <b>Species reactivity</b>  | <b>Reacts with:</b> Human   |
| <b>Immunogen</b>           | Synthetic peptide corresponding to Human c-Jun. Range of aa 40-89 Synthetic non-phosphopeptide derived from human c-Jun around the phosphorylation site of Serine 73.<br>Database link: <a href="#">P05412</a>  |
| <b>General notes</b>       | <p>The Life Science industry has been in the grips of a reproducibility crisis for a number of years. Abcam is leading the way in addressing this with our range of recombinant monoclonal antibodies and knockout edited cell lines for gold-standard validation. Please check that this product meets your needs before purchasing.</p> <p>If you have any questions, special requirements or concerns, please send us an inquiry and/or contact our Support team ahead of purchase. Recommended alternatives for this product can be found below, along with publications, customer reviews and Q&amp;As</p> |

#### Properties

|                             |  |
|-----------------------------|--|
| <b>Form</b>                 | Liquid   |
| <b>Storage instructions</b> | Shipped at 4°C. Upon delivery aliquot and store at -20°C. Avoid freeze / thaw cycles.  |
| <b>Storage buffer</b>       | <p>pH: 7.40</p> <p>Preservative: 0.02% Sodium azide</p> <p>Constituents: PBS, 50% Glycerol (glycerin, glycerine), 0.87% Sodium chloride</p> <p>Without Mg<sup>2+</sup> and Ca<sup>2+</sup></p> |
| <b>Purity</b>               | Immunogen affinity purified  |
| <b>Clonality</b>            | Polyclonal   |
| <b>Isotype</b>              | IgG  |

## Applications

### The Abpromise guarantee

Our **Abpromise guarantee** covers the use of ab31367 in the following tested applications.

The application notes include recommended starting dilutions; optimal dilutions/concentrations should be determined by the end user.

| Application | Abreviews | Notes  |
|-------------|-----------|--|
| WB          |           | 1/500 - 1/1000. Detects a band of approximately 42 kDa (predicted molecular weight: 36 kDa). |
| IHC-P       |           | Use at an assay dependent concentration.   |

## Target

### Function

Transcription factor that recognizes and binds to the enhancer heptamer motif 5'-TGA[CG]TCA-3'. Promotes activity of NR5A1 when phosphorylated by HIPK3 leading to increased steroidogenic gene expression upon cAMP signaling pathway stimulation. Involved in activated KRAS-mediated transcriptional activation of USP28 in colorectal cancer (CRC) cells (PubMed:24623306). Binds to the USP28 promoter in colorectal cancer (CRC) cells (PubMed:24623306).

### Sequence similarities

Belongs to the bZIP family. Jun subfamily.  
Contains 1 bZIP (basic-leucine zipper) domain.

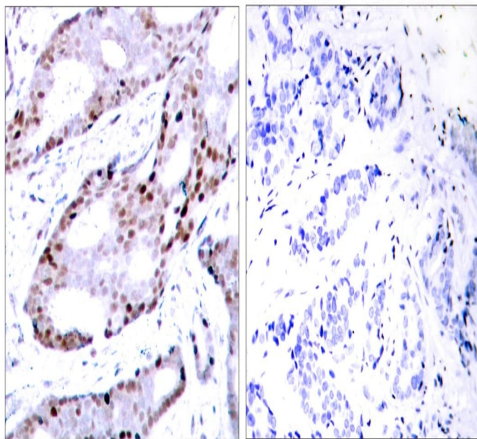
### Post-translational modifications

Ubiquitinated by the SCF(FBXW7), leading to its degradation. Ubiquitination takes place following phosphorylation, that promotes interaction with FBXW7.  
Phosphorylated by CaMK4 and PRKDC; phosphorylation enhances the transcriptional activity.  
Phosphorylated by HIPK3. Phosphorylated by DYRK2 at Ser-243; this primes the protein for subsequent phosphorylation by GSK3B at Thr-239. Phosphorylated at Thr-239, Ser-243 and Ser-249 by GSK3B; phosphorylation reduces its ability to bind DNA. Phosphorylated by PAK2 at Thr-2, Thr-8, Thr-89, Thr-93 and Thr-286 thereby promoting JUN-mediated cell proliferation and transformation. Phosphorylated by PLK3 following hypoxia or UV irradiation, leading to increase DNA-binding activity.  
Acetylated at Lys-271 by EP300.

### Cellular localization

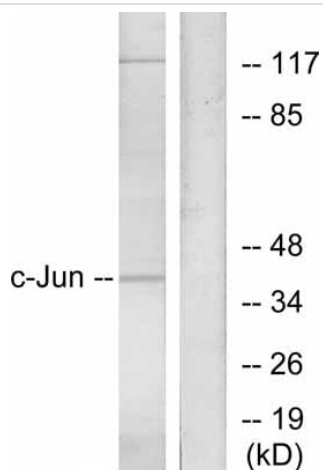
Nucleus.

## Images



Immunohistochemical analysis of paraffin-embedded human breast carcinoma labeling c-Jun with ab31367 at 1/100. Left: c-Jun antibody, Right: Preincubated with synthesized peptide.

Immunohistochemistry (Formalin/PFA-fixed paraffin-embedded sections) - Anti-c-Jun antibody (ab31367)



**All lanes :** Anti-c-Jun antibody (ab31367) at 1/1000 dilution

**Lane 1 :** HeLa cells lysate, preincubated with immunogen (synthetic non-phosphopeptide)

**Lane 2 :** HeLa cells lysate

**Predicted band size:** 36 kDa

Western blot - Anti-c-Jun antibody (ab31367)

**Please note:** All products are "FOR RESEARCH USE ONLY. NOT FOR USE IN DIAGNOSTIC PROCEDURES"

### Our Abpromise to you: Quality guaranteed and expert technical support

- Replacement or refund for products not performing as stated on the datasheet
- Valid for 12 months from date of delivery
- Response to your inquiry within 24 hours
- We provide support in Chinese, English, French, German, Japanese and Spanish
- Extensive multi-media technical resources to help you
- We investigate all quality concerns to ensure our products perform to the highest standards

If the product does not perform as described on this datasheet, we will offer a refund or replacement. For full details of the Abpromise, please visit <https://www.abcam.com/abpromise> or contact our technical team.

## Terms and conditions

---

- Guarantee only valid for products bought direct from Abcam or one of our authorized distributors