

Product datasheet

Anti-C Reactive Protein antibody [EPR22862-10] ab256492

Recombinant RabMAb

★★★★★ 1 Abreviews 4 Images

Overview

Product name	Anti-C Reactive Protein antibody [EPR22862-10]
Description	Rabbit monoclonal [EPR22862-10] to C Reactive Protein
Host species	Rabbit
Tested applications	Suitable for: WB, IHC-P Unsuitable for: IP
Species reactivity	Reacts with: Human
Immunogen	Synthetic peptide. This information is proprietary to Abcam and/or its suppliers.
Positive control	WB: Human liver, Human plasma, Human kidney, Human lung cancer and Human colon cancer lysates. IHC-P: Human liver and Human liver cancer tissues.
General notes	This product is a recombinant monoclonal antibody, which offers several advantages including: <ul style="list-style-type: none"> - High batch-to-batch consistency and reproducibility - Improved sensitivity and specificity - Long-term security of supply - Animal-free production For more information see here . Our RabMAb [®] technology is a patented hybridoma-based technology for making rabbit monoclonal antibodies. For details on our patents, please refer to RabMAb[®] patents .

Properties

Form	Liquid
Storage instructions	Shipped at 4°C. Store at +4°C short term (1-2 weeks). Upon delivery aliquot. Store at -20°C long term. Avoid freeze / thaw cycle.
Storage buffer	pH: 7.2 Preservative: 0.01% Sodium azide Constituents: PBS, 40% Glycerol (glycerin, glycerine), 0.05% BSA
Purity	Protein A purified
Clonality	Monoclonal

Clone number EPR22862-10

Isotype IgG

Applications

The Abpromise guarantee Our **Abpromise guarantee** covers the use of ab256492 in the following tested applications. The application notes include recommended starting dilutions; optimal dilutions/concentrations should be determined by the end user.

Application	Abreviews	Notes
WB		1/1000. Predicted molecular weight: 25 kDa.
IHC-P	★★★★★ (1)	1/2000.

Application notes Is unsuitable for IP.

Target

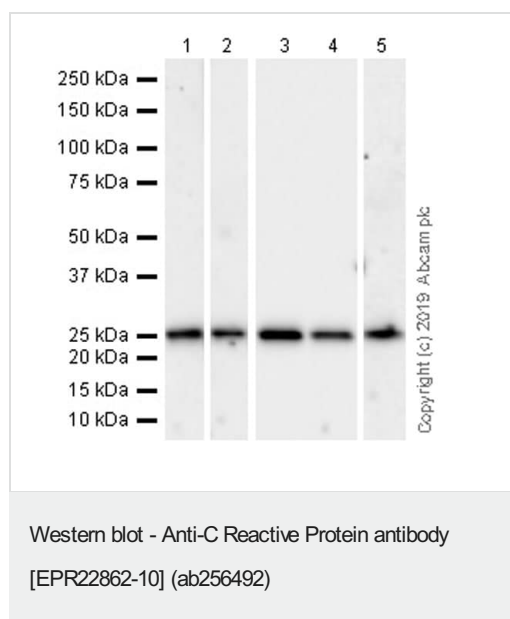
Function Displays several functions associated with host defense: it promotes agglutination, bacterial capsular swelling, phagocytosis and complement fixation through its calcium-dependent binding to phosphorylcholine. Can interact with DNA and histones and may scavenge nuclear material released from damaged circulating cells.

Tissue specificity Found in plasma.

Sequence similarities Belongs to the pentaxin family.
Contains 1 pentaxin domain.

Cellular localization Secreted.

Images



All lanes : Anti-C Reactive Protein antibody [EPR22862-10] (ab256492) at 1/1000 dilution

Lane 1 : Human liver tissue lysate

Lane 2 : Human plasma lysate

Lane 3 : Human kidney tissue lysate

Lane 4 : Human lung cancer tissue lysate

Lane 5 : Human colon cancer tissue lysate

Lysates/proteins at 20 µg per lane.

Secondary

All lanes : VeriBlot for IP Detection Reagent (HRP) (**ab131366**) at 1/10000 dilution

Predicted band size: 25 kDa

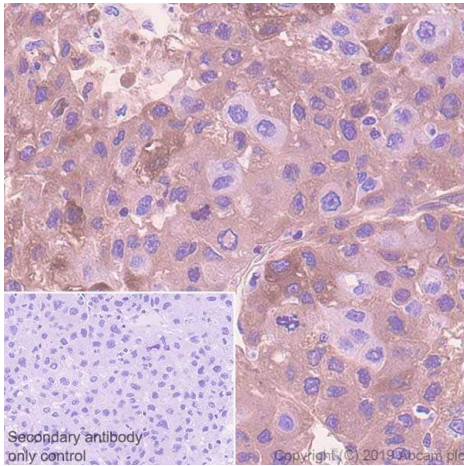
Observed band size: 25 kDa

Blocking and diluting buffer and concentration: 5% NFDM/TBST

The expression profile is consistent with what has been described in the literature (PMID: 25812732, 28962140)

Exposure time: Lanes 1-2: 3 seconds Lanes 3-4: 59 seconds

Lane 5: 3 minutes

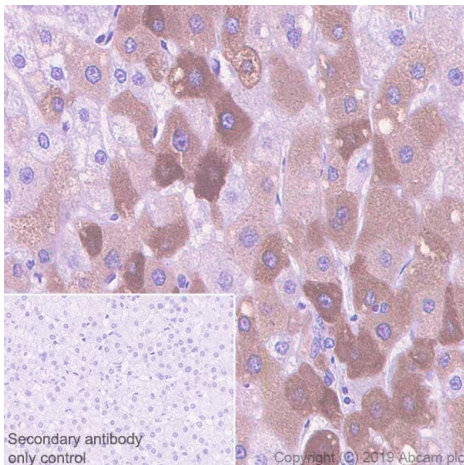


Immunohistochemistry (Formalin/PFA-fixed paraffin-embedded sections) - Anti-C Reactive Protein antibody [EPR22862-10] (ab256492)

Immunohistochemical analysis of paraffin-embedded Human liver cancer tissue labeling C Reactive Protein with ab256492 at 1/2000 dilution followed by a ready to use Rabbit specific IHC polymer detection kit HRP/DAB (**ab209101**). Positive staining in human liver cancer (PMID: 25812732, 30056637) is observed. The section was incubated with ab256492 for 15 mins at room temperature. The immunostaining was performed on a Leica Biosystems BOND® RX instrument. Counterstained with Hematoxylin.

Secondary antibody only control: Secondary antibody is a ready to use Rabbit specific IHC polymer detection kit HRP/DAB (**ab209101**).

Heat mediated antigen retrieval with Tris-EDTA buffer (pH 9.0, epitope retrieval solution 2) for 20 mins.



Immunohistochemistry (Formalin/PFA-fixed paraffin-embedded sections) - Anti-C Reactive Protein antibody [EPR22862-10] (ab256492)

Immunohistochemical analysis of paraffin-embedded Human liver tissue labeling C Reactive Protein with ab256492 at 1/2000 dilution followed by a ready to use Rabbit specific IHC polymer detection kit HRP/DAB (**ab209101**). Positive staining in human liver (PMID: 25812732, 30056637). The section was incubated with ab256492 for 15 mins at room temperature. The immunostaining was performed on a Leica Biosystems BOND® RX instrument. Counterstained with Hematoxylin.

Secondary antibody only control: Secondary antibody is a ready to use Rabbit specific IHC polymer detection kit HRP/DAB (**ab209101**).

Heat mediated antigen retrieval with Tris-EDTA buffer (pH 9.0, epitope retrieval solution 2) for 20 mins.

Why choose a recombinant antibody?



Research with confidence
Consistent and reproducible results



Long-term and scalable supply
Recombinant technology



Success from the first experiment
Confirmed specificity



Ethical standards compliant
Animal-free production

Anti-C Reactive Protein antibody [EPR22862-10]
(ab256492)

Please note: All products are "FOR RESEARCH USE ONLY. NOT FOR USE IN DIAGNOSTIC PROCEDURES"

Our Abpromise to you: Quality guaranteed and expert technical support

- Replacement or refund for products not performing as stated on the datasheet
- Valid for 12 months from date of delivery
- Response to your inquiry within 24 hours
- We provide support in Chinese, English, French, German, Japanese and Spanish
- Extensive multi-media technical resources to help you
- We investigate all quality concerns to ensure our products perform to the highest standards

If the product does not perform as described on this datasheet, we will offer a refund or replacement. For full details of the Abpromise, please visit <https://www.abcam.com/abpromise> or contact our technical team.

Terms and conditions

- Guarantee only valid for products bought direct from Abcam or one of our authorized distributors