

Product datasheet

Anti-c-Rel antibody [EPR2559(2)] ab133251

KO **VALIDATED** Recombinant RabMAb[®]

★★★★★ [3 Abreviews](#) [4 References](#) [4 Images](#)

Overview

Product name	Anti-c-Rel antibody [EPR2559(2)]
Description	Rabbit monoclonal [EPR2559(2)] to c-Rel
Host species	Rabbit
Tested applications	Suitable for: WB, IP
Species reactivity	Reacts with: Human
Immunogen	Synthetic peptide. This information is proprietary to Abcam and/or its suppliers.
Positive control	WB: HAP1, HuT-78, and HeLa cell lysates. IP: HeLa cell lysate.
General notes	<p>This product is a recombinant monoclonal antibody, which offers several advantages including:</p> <ul style="list-style-type: none"> - High batch-to-batch consistency and reproducibility - Improved sensitivity and specificity - Long-term security of supply - Animal-free production <p>For more information see here.</p> <p>Our RabMAb[®] technology is a patented hybridoma-based technology for making rabbit monoclonal antibodies. For details on our patents, please refer to RabMAb[®] patents.</p> <p>Mouse, Rat: We have preliminary internal testing data to indicate this antibody may not react with these species. Please contact us for more information.</p>

Properties

Form	Liquid
Storage instructions	Shipped at 4°C. Store at +4°C short term (1-2 weeks). Upon delivery aliquot. Store at -20°C long term. Avoid freeze / thaw cycle.
Storage buffer	<p>pH: 7.20</p> <p>Preservative: 0.01% Sodium azide</p> <p>Constituents: 0.05% BSA, 40% Glycerol (glycerin, glycerine), 59% PBS</p>
Purity	Protein A purified
Clonality	Monoclonal
Clone number	EPR2559(2)

Isotype

IgG

Applications

The Abpromise guarantee

Our **Abpromise guarantee** covers the use of ab133251 in the following tested applications.

The application notes include recommended starting dilutions; optimal dilutions/concentrations should be determined by the end user.

Application	Abreviews	Notes
WB	★★★★★ (1)	1/1000. Predicted molecular weight: 68 kDa. For unpurified use at 1/10000 - 1/50000.
IP		1/10 - 1/100.

Target

Function

Proto-oncogene that may play a role in differentiation and lymphopoiesis. NF-kappa-B is a pleiotropic transcription factor which is present in almost all cell types and is involved in many biological processes such as inflammation, immunity, differentiation, cell growth, tumorigenesis and apoptosis. NF-kappa-B is a homo- or heterodimeric complex formed by the Rel-like domain-containing proteins RELA/p65, RELB, NFKB1/p105, NFKB1/p50, REL and NFKB2/p52. The dimers bind at kappa-B sites in the DNA of their target genes and the individual dimers have distinct preferences for different kappa-B sites that they can bind with distinguishable affinity and specificity. Different dimer combinations act as transcriptional activators or repressors, respectively. NF-kappa-B is controlled by various mechanisms of post-translational modification and subcellular compartmentalization as well as by interactions with other cofactors or corepressors. NF-kappa-B complexes are held in the cytoplasm in an inactive state complexed with members of the NF-kappa-B inhibitor (I-kappa-B) family. In a conventional activation pathway, I-kappa-B is phosphorylated by I-kappa-B kinases (IKKs) in response to different activators, subsequently degraded thus liberating the active NF-kappa-B complex which translocates to the nucleus. The NF-kappa-B heterodimer RELA/p65-c-Rel is a transcriptional activator.

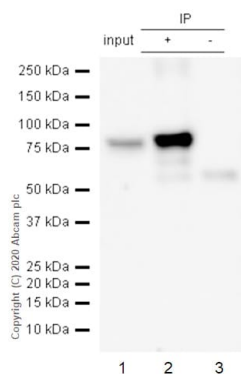
Sequence similarities

Contains 1 RHD (Rel-like) domain.

Cellular localization

Nucleus.

Images



Immunoprecipitation - Anti-c-Rel antibody
[EPR2559(2)] (ab133251)

Purified ab133251 at 1/20 dilution (0.6µg) immunoprecipitating c-Rel in HeLa whole cell lysate.

Lane 1 (input): HeLa (Human cervix adenocarcinoma epithelial cell) whole cell lysate 10µg

Lane 2 (+): ab133251 + HeLa whole cell lysate.

Lane 3 (-): Rabbit monoclonal IgG ([ab172730](#)) instead of ab133251 in HeLa whole cell lysate.

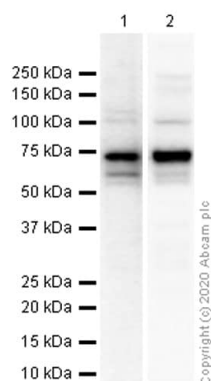
VeriBlot for IP Detection Reagent (HRP) ([ab131366](#)) (1/5000 dilution) was used for Western blotting.

Blocking Buffer and concentration: 5% NFDm/TBST.

Diluting buffer and concentration: 5% NFDm/TBST.

Observed band size: 78 kDa

Fresh lysate is required to avoid protein degradation.



Western blot - Anti-c-Rel antibody [EPR2559(2)]
(ab133251)

All lanes : Anti-c-Rel antibody [EPR2559(2)] (ab133251) at 1/1000 dilution (Purified)

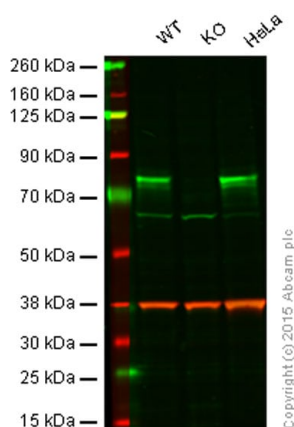
Lane 1 : HeLa (Human cervix adenocarcinoma epithelial cell) whole cell lysate

Lane 2 : HuT-78 (Human Sezary syndrome cutaneous T lymphocyte) whole cell lysate at 20 µg

Secondary

All lanes : Goat Anti-Rabbit IgG H&L (HRP) ([ab97051](#)) at 1/20000 dilution

Predicted band size: 68 kDa



Western blot - Anti-c-Rel antibody [EPR2559(2)]
(ab133251)

Lane 1: Wild-type HAP1 cell lysate (20 µg)

Lane 2: c-Rel knockout HAP1 cell lysate (20 µg)

Lane 3: HeLa cell lysate (20 µg)

Lanes 1 - 3: Merged signal (red and green). Green - ab133251 observed at 75 kDa. Red - loading control, **ab8245**, observed at 37 kDa.

ab133251 was shown to recognize c-Rel when c-Rel knockout samples were used, along with additional cross-reactive bands. Wild-type and c-Rel knockout samples were subjected to SDS-PAGE. ab133251 and **ab8245** (loading control to GAPDH) were diluted 1/1000 and 1/2000 respectively and incubated overnight at 4°C. Blots were developed with Goat anti-Rabbit IgG H&L (IRDye® 800CW) preadsorbed **ab216773** and Goat anti-Mouse IgG H&L (IRDye® 680RD) preadsorbed **ab216776** secondary antibodies at 1/10000 dilution for 1 h at room temperature before imaging.

Why choose a recombinant antibody?



Research with confidence
Consistent and reproducible results



Long-term and scalable supply
Recombinant technology



Success from the first experiment
Confirmed specificity



Ethical standards compliant
Animal-free production

Anti-c-Rel antibody [EPR2559(2)] (ab133251)

Please note: All products are "FOR RESEARCH USE ONLY. NOT FOR USE IN DIAGNOSTIC PROCEDURES"

Our Abpromise to you: Quality guaranteed and expert technical support

- Replacement or refund for products not performing as stated on the datasheet
- Valid for 12 months from date of delivery
- Response to your inquiry within 24 hours
- We provide support in Chinese, English, French, German, Japanese and Spanish

- Extensive multi-media technical resources to help you
- We investigate all quality concerns to ensure our products perform to the highest standards

If the product does not perform as described on this datasheet, we will offer a refund or replacement. For full details of the Abpromise, please visit <https://www.abcam.com/abpromise> or contact our technical team.

Terms and conditions

- Guarantee only valid for products bought direct from Abcam or one of our authorized distributors