

Product datasheet

Anti-C14orf106 antibody ab89265

3 Images

Overview

| | |
|----------------------------|---|
| Product name | Anti-C14orf106 antibody |
| Description | Mouse polyclonal to C14orf106 |
| Host species | Mouse |
| Tested applications | Suitable for: WB, ICC/IF |
| Species reactivity | Reacts with: Human |
| Immunogen | Recombinant full length protein within Human C14orf106. The exact immunogen sequence used to generate this antibody is proprietary information. If additional detail on the immunogen is needed to determine the suitability of the antibody for your needs, please contact our Scientific Support team to discuss your requirements. |
| Positive control | WB: Human spleen tissue lysate, C14orf106 transfected 293T cell lysate ICC/IF: HeLa cell |
| General notes | <p>The Life Science industry has been in the grips of a reproducibility crisis for a number of years. Abcam is leading the way in addressing this with our range of recombinant monoclonal antibodies and knockout edited cell lines for gold-standard validation. Please check that this product meets your needs before purchasing.</p> <p>If you have any questions, special requirements or concerns, please send us an inquiry and/or contact our Support team ahead of purchase. Recommended alternatives for this product can be found below, along with publications, customer reviews and Q&As</p> |

Properties

| | |
|-----------------------------|---|
| Form | Liquid |
| Storage instructions | Shipped at 4°C. Upon delivery aliquot and store at -20°C or -80°C. Avoid repeated freeze / thaw cycles. |
| Storage buffer | pH: 7.40 Constituent: 100% PBS |
| Purity | Protein A purified |
| Clonality | Polyclonal |
| Isotype | IgG |

Applications

The Abpromise guarantee

Our **Abpromise guarantee** covers the use of ab89265 in the following tested applications.

The application notes include recommended starting dilutions; optimal dilutions/concentrations should be determined by the end user.

| Application | Abreviews | Notes |
|-------------|-----------|-------|
| WB | | |
| ICC/IF | | |

Application notes

ICC/IF: Use at a concentration of 10 µg/ml.

WB: Use at a concentration of 1 µg/ml. Predicted molecular weight: 129 kDa for isoform 1 and 44 kDa for isoform 2.

Not yet tested in other applications.

Optimal dilutions/concentrations should be determined by the end user.

Target

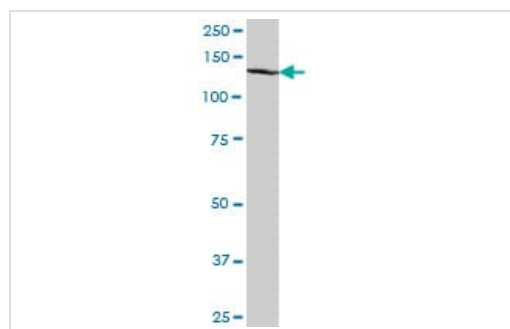
Relevance

C14orf106 is required for recruitment of CENPA to centromeres and normal chromosome segregation during mitosis. It interacts with SP1. There are two isoforms.

Cellular localization

Nucleus. Centromere. Note: Associated with centromeres in interphase cells, from late anaphase to the G1 phase. Not detected on centromeres during earlier phases of mitosis. Associated with chromatin.

Images



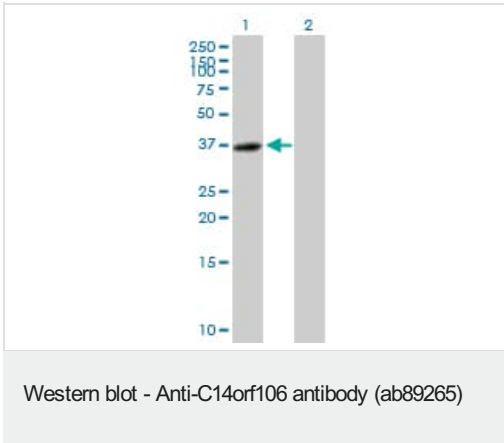
Western blot - Anti-C14orf106 antibody (ab89265)

Anti-C14orf106 antibody (ab89265) at 1 µg/ml + human spleen tissue lysate at 50 µg

Developed using the ECL technique.

Predicted band size: 129 , 44 kDa

Observed band size: ~129 kDa



All lanes : Anti-C14orf106 antibody (ab89265) at 1 µg/ml

Lane 1 : C14orf106 transfected 293T cell lysate

Lane 2 : Non transfected 293T cell lysate

Lysates/proteins at 25 µg per lane.

Developed using the ECL technique.

Predicted band size: 129 , 44 kDa

Observed band size: 37 kDa



ab89265, at 10 µg/ml, staining C14orf106 in HeLa cell by Immunofluorescence.

Please note: All products are "FOR RESEARCH USE ONLY. NOT FOR USE IN DIAGNOSTIC PROCEDURES"

Our Abpromise to you: Quality guaranteed and expert technical support

- Replacement or refund for products not performing as stated on the datasheet
- Valid for 12 months from date of delivery
- Response to your inquiry within 24 hours
- We provide support in Chinese, English, French, German, Japanese and Spanish
- Extensive multi-media technical resources to help you
- We investigate all quality concerns to ensure our products perform to the highest standards

If the product does not perform as described on this datasheet, we will offer a refund or replacement. For full details of the Abpromise, please visit <https://www.abcam.com/abpromise> or contact our technical team.

Terms and conditions

- Guarantee only valid for products bought direct from Abcam or one of our authorized distributors