

Product datasheet

Anti-C17orf58 antibody [OTI6E9] ab236376

1 Image

Overview

Product name	Anti-C17orf58 antibody [OTI6E9]
Description	Mouse monoclonal [OTI6E9] to C17orf58
Host species	Mouse
Tested applications	Suitable for: WB
Species reactivity	Reacts with: Human
Immunogen	Recombinant full length protein corresponding to Human C17orf58 aa 1 to the C-terminus. (NP_858041) produced in E.coli. Database link: Q2M2W7-1
	Run BLAST with Run BLAST with
Positive control	WB: pCMV6-ENTRY C17orf58 cDNA transfected HEK-293T cell lysate.
General notes	Clone OTI6E9 (formerly 6E9). The Life Science industry has been in the grips of a reproducibility crisis for a number of years. Abcam is leading the way in addressing this with our range of recombinant monoclonal antibodies and knockout edited cell lines for gold-standard validation. Please check that this product meets your needs before purchasing. If you have any questions, special requirements or concerns, please send us an inquiry and/or contact our Support team ahead of purchase. Recommended alternatives for this product can be found below, along with publications, customer reviews and Q&As

Properties

Form	Liquid
Storage instructions	Shipped at 4°C. Store at +4°C short term (1-2 weeks). Upon delivery aliquot. Store at -20°C long term. Avoid freeze / thaw cycle.
Storage buffer	pH: 7.30 Preservative: 0.02% Sodium azide Constituents: PBS, 1% BSA, 50% Glycerol
Purity	Affinity purified
Purification notes	Purified from cell culture supernatant.
Clonality	Monoclonal
Clone number	OTI6E9

Isotype

IgG2b

Applications

The Abpromise guarantee

Our **Abpromise guarantee** covers the use of ab236376 in the following tested applications.

The application notes include recommended starting dilutions; optimal dilutions/concentrations should be determined by the end user.

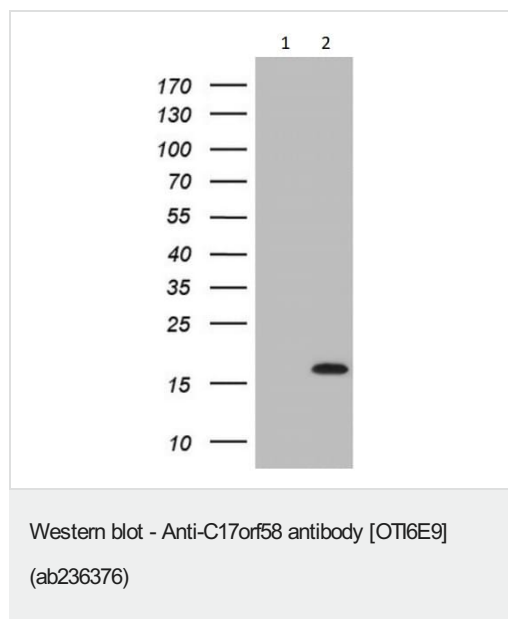
Application	Abreviews	Notes
WB		1/2000. Predicted molecular weight: 11 kDa.

Target

Sequence similarities

Belongs to the UPF0450 family.

Images



All lanes : Anti-C17orf58 antibody [OTI6E9] (ab236376) at 1/2000 dilution

Lane 1 : pCMV6-ENTRY control cDNA transfected HEK-293T (human epithelial cell line from embryonic kidney transformed with large T antigen) cell lysate

Lane 2 : pCMV6-ENTRY C17orf58 cDNA transfected HEK-293T (human epithelial cell line from embryonic kidney transformed with large T antigen) cell lysate

Lysates/proteins at 5 µg per lane.

Predicted band size: 11 kDa

Please note: All products are "FOR RESEARCH USE ONLY. NOT FOR USE IN DIAGNOSTIC PROCEDURES"

Our Abpromise to you: Quality guaranteed and expert technical support

- Replacement or refund for products not performing as stated on the datasheet
- Valid for 12 months from date of delivery
- Response to your inquiry within 24 hours
- We provide support in Chinese, English, French, German, Japanese and Spanish
- Extensive multi-media technical resources to help you
- We investigate all quality concerns to ensure our products perform to the highest standards

If the product does not perform as described on this datasheet, we will offer a refund or replacement. For full details of the Abpromise, please visit <https://www.abcam.com/abpromise> or contact our technical team.

Terms and conditions

- Guarantee only valid for products bought direct from Abcam or one of our authorized distributors