

Product datasheet

Anti-C19orf63 antibody [EPR13223-65] ab180148

KO VALIDATED Recombinant RabMAB

[3 References](#) [3 Images](#)

Overview

Product name	Anti-C19orf63 antibody [EPR13223-65]
Description	Rabbit monoclonal [EPR13223-65] to C19orf63
Host species	Rabbit
Tested applications	Suitable for: WB
Species reactivity	Reacts with: Human
Immunogen	Recombinant fragment within Human C19orf63 aa 50-150. The exact sequence is proprietary. Database link: Q5UCC4
Positive control	WB: HeLa, A549, 293 and U87-MG cell lysates.
General notes	This product is a recombinant monoclonal antibody, which offers several advantages including: <ul style="list-style-type: none">- High batch-to-batch consistency and reproducibility- Improved sensitivity and specificity- Long-term security of supply- Animal-free production For more information see here . Our RabMAB [®] technology is a patented hybridoma-based technology for making rabbit monoclonal antibodies. For details on our patents, please refer to RabMAB[®] patents .

Properties

Form	Liquid
Storage instructions	Shipped at 4°C. Store at +4°C short term (1-2 weeks). Upon delivery aliquot. Store at -20°C long term. Avoid freeze / thaw cycle.
Storage buffer	Preservative: 0.01% Sodium azide Constituents: 40% Glycerol (glycerin, glycerine), 59% PBS, 0.05% BSA
Purity	Protein A purified
Clonality	Monoclonal
Clone number	EPR13223-65
Isotype	IgG

Applications

The Abpromise guarantee

Our **Abpromise guarantee** covers the use of ab180148 in the following tested applications.

The application notes include recommended starting dilutions; optimal dilutions/concentrations should be determined by the end user.

Application	Abreviews	Notes
WB		1/1000 - 1/2000. Detects a band of approximately 27 kDa (predicted molecular weight: 27 kDa).

Target

Tissue specificity

Present in serum (at protein level). Expressed in the pituitary gland; very low levels in other brain regions.

Sequence similarities

Belongs to the EMC10 family.

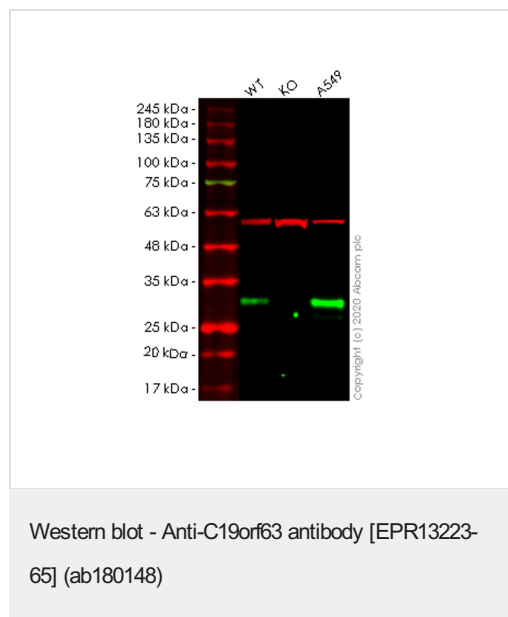
Post-translational modifications

Glycosylated.

Cellular localization

Secreted and Membrane.

Images



All lanes : Anti-C19orf63 antibody [EPR13223-65] (ab180148) at 1/1000 dilution

Lane 1 : Wild-type HeLa cell lysate

Lane 2 : EMC10 knockout HeLa cell lysate

Lane 3 : A549 cell lysate

Lysates/proteins at 20 µg per lane.

Secondary

All lanes : Goat anti-Rabbit IgG H&L (IRDye® 800CW) preadsorbed (**ab216773**) at 1/10000 dilution

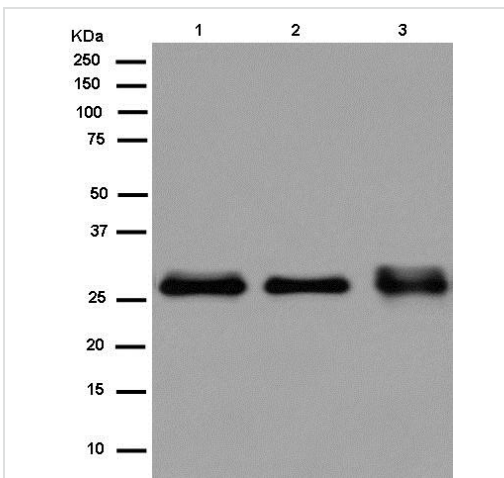
Predicted band size: 27 kDa

Observed band size: 27 kDa

Lanes 1-3: Merged signal (red and green). Green - ab180148 observed at 27 kDa. Red - loading control **ab7291** observed at 50 kDa.

ab180148 Anti-C19orf63 antibody [EPR13223-65] was shown to specifically react with C19orf63 in wild-type HeLa cells. Loss of

signal was observed when knockout cell line **ab265783** (knockout cell lysate **ab257939**) was used. Wild-type and C19orf63 knockout samples were subjected to SDS-PAGE. ab180148 and Anti-alpha Tubulin antibody [DM1A] - Loading Control (**ab7291**) were incubated overnight at 4°C at 1 in 1000 dilution and 1 in 20000 dilution respectively. Blots were developed with Goat anti-Rabbit IgG H&L (IRDye® 800CW) preadsorbed (**ab216773**) and Goat anti-Mouse IgG H&L (IRDye® 680RD) preadsorbed (**ab216776**) secondary antibodies at 1 in 20000 dilution for 1 hour at room temperature before imaging.



Western blot - Anti-C19orf63 antibody [EPR13223-65] (ab180148)

All lanes : Anti-C19orf63 antibody [EPR13223-65] (ab180148) at 1/1000 dilution

Lane 1 : A549 cell lysate

Lane 2 : 293 cell lysate

Lane 3 : U87-MG cell lysate

Lysates/proteins at 20 µg per lane.

Secondary

All lanes : Goat Anti-Rabbit IgG, (H+L), Peroxidase conjugated at 1/1000 dilution

Predicted band size: 27 kDa

Why choose a recombinant antibody?

 <p>Research with confidence Consistent and reproducible results</p>	 <p>Long-term and scalable supply Recombinant technology</p>
 <p>Success from the first experiment Confirmed specificity</p>	 <p>Ethical standards compliant Animal-free production</p>

Anti-C19orf63 antibody [EPR13223-65] (ab180148)

Please note: All products are "FOR RESEARCH USE ONLY. NOT FOR USE IN DIAGNOSTIC PROCEDURES"

Our Abpromise to you: Quality guaranteed and expert technical support

- Replacement or refund for products not performing as stated on the datasheet
- Valid for 12 months from date of delivery
- Response to your inquiry within 24 hours

- We provide support in Chinese, English, French, German, Japanese and Spanish
- Extensive multi-media technical resources to help you
- We investigate all quality concerns to ensure our products perform to the highest standards

If the product does not perform as described on this datasheet, we will offer a refund or replacement. For full details of the Abpromise, please visit <https://www.abcam.com/abpromise> or contact our technical team.

Terms and conditions

- Guarantee only valid for products bought direct from Abcam or one of our authorized distributors