


Product datasheet

Anti-C1orf77/FOP antibody ab123603

1 Image

Overview

Product name	Anti-C1orf77/FOP antibody
Description	Rabbit polyclonal to C1orf77/FOP
Host species	Rabbit
Tested applications	Suitable for: WB
Species reactivity	Reacts with: Human Predicted to work with: Mouse, Rat, Rabbit, Horse, Chicken, Guinea pig, Cow, Dog, Turkey, Pig, Chimpanzee, Rhesus monkey, Gorilla, Orangutan 
Immunogen	Synthetic peptide corresponding to Human C1orf77/FOP aa 1-100. Database link: Q9Y3Y2
Positive control	Whole cell lysate from Jurkat, 293T and HeLa cells.
General notes	<p>The Life Science industry has been in the grips of a reproducibility crisis for a number of years. Abcam is leading the way in addressing this with our range of recombinant monoclonal antibodies and knockout edited cell lines for gold-standard validation. Please check that this product meets your needs before purchasing.</p> <p>If you have any questions, special requirements or concerns, please send us an inquiry and/or contact our Support team ahead of purchase. Recommended alternatives for this product can be found below, along with publications, customer reviews and Q&As</p>

Properties

Form	Liquid
Storage instructions	Shipped at 4°C. Upon delivery aliquot and store at -20°C. Avoid freeze / thaw cycles.
Storage buffer	pH: 7 Preservative: 0.09% Sodium azide Constituent: 99% Tris citrate/phosphate
Purity	pH 7 to 8 Immunogen affinity purified
Clonality	Polyclonal
Isotype	IgG

Applications

The Abpromise guarantee

Our **Abpromise guarantee** covers the use of ab123603 in the following tested applications.

The application notes include recommended starting dilutions; optimal dilutions/concentrations should be determined by the end user.

Application	Abreviews	Notes
WB		1/500 - 1/2500. Predicted molecular weight: 26 kDa.

Target

Function

Plays an important role in the ligand-dependent activation of estrogen receptor target genes (PubMed:19858291). May play a role in the silencing of fetal globin genes (PubMed:20688955). Recruits the 5FMC complex to ZNF148, leading to desumoylation of ZNF148 and subsequent transactivation of ZNF148 target genes (By similarity). Plays an important role in the tumorigenicity of glioblastoma cells. Binds to 5-hydroxymethylcytosine (5hmC) and associates with the methylosome complex containing PRMT1, PRMT5, MEP50 and ERH. The CHTOP-methylosome complex associated with 5hmC is recruited to selective sites on the chromosome, where it methylates H4R3 and activates the transcription of genes involved in glioblastomagenesis (PubMed:25284789). Required for effective mRNA nuclear export and is a component of the TREX complex which is thought to couple mRNA transcription, processing and nuclear export, and specifically associates with spliced mRNA and not with unspliced pre-mRNA. TREX is recruited to spliced mRNAs by a transcription-independent mechanism, binds to mRNA upstream of the exon-junction complex (EJC) and is recruited in a splicing- and cap-dependent manner to a region near the 5' end of the mRNA where it functions in mRNA export to the cytoplasm via the TAP/NFX1 pathway. The TREX complex is essential for the export of Kaposi's sarcoma-associated herpesvirus (KSHV) intronless mRNAs and infectious virus production. Stimulates DDX39B ATPase and helicase activities. In cooperation with ALYREF/THOC4 enhances NXF1 RNA binding activity (PubMed:23299939).

Tissue specificity

Expressed in an erythroid progenitor cell line derived from peripheral blood. Expressed in glioblastoma cells (PubMed:25284789).

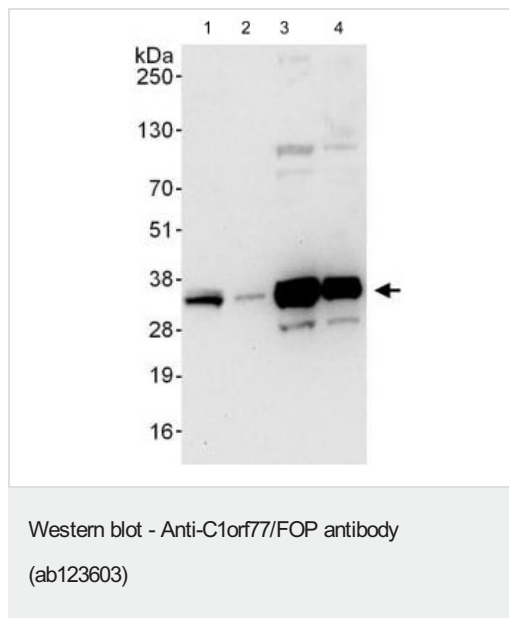
Post-translational modifications

Asymmetrically methylated by PRMT1 (PubMed:25284789). Symmetrically methylated by PRMT5.

Cellular localization

Nucleus. Nucleus, nucleolus. Nucleus, nucleoplasm. Nucleus speckle. Mostly associated with facultative heterochromatin (By similarity). Localizes to regions surrounding nuclear speckles known as perispeckles in which TREX complex assembly seems to occur (PubMed:23826332).

Images



All lanes : Anti-C1orf77/FOP antibody (ab123603) at 0.4 µg/ml

Lane 1 : Whole cell lysate from Jurkat cells at 50 µg

Lane 2 : Whole cell lysate from Jurkat cells at 15 µg

Lane 3 : Whole cell lysate from 293T cells at 50 µg

Lane 4 : Whole cell lysate from HeLa cells at 50 µg

Developed using the ECL technique.

Predicted band size: 26 kDa

Exposure time: 30 seconds

Please note: All products are "FOR RESEARCH USE ONLY. NOT FOR USE IN DIAGNOSTIC PROCEDURES"

Our Abpromise to you: Quality guaranteed and expert technical support

- Replacement or refund for products not performing as stated on the datasheet
- Valid for 12 months from date of delivery
- Response to your inquiry within 24 hours
- We provide support in Chinese, English, French, German, Japanese and Spanish
- Extensive multi-media technical resources to help you
- We investigate all quality concerns to ensure our products perform to the highest standards

If the product does not perform as described on this datasheet, we will offer a refund or replacement. For full details of the Abpromise, please visit <https://www.abcam.com/abpromise> or contact our technical team.

Terms and conditions

- Guarantee only valid for products bought direct from Abcam or one of our authorized distributors