

Product datasheet

Anti-C1QA antibody [EPR14634] ab189922

Recombinant RabMAb

[3 References](#) [5 Images](#)

Overview

Product name	Anti-C1QA antibody [EPR14634]
Description	Rabbit monoclonal [EPR14634] to C1QA
Host species	Rabbit
Tested applications	Suitable for: WB, IHC-P Unsuitable for: ICC/IF
Species reactivity	Reacts with: Rat, Human
Immunogen	Recombinant fragment. This information is proprietary to Abcam and/or its suppliers.
Positive control	Human plasma, Human serum, Human spleen, C6 and PC-12 lysates; Human and rat kidney tissues.
General notes	<p>This product is a recombinant monoclonal antibody, which offers several advantages including:</p> <ul style="list-style-type: none"> - High batch-to-batch consistency and reproducibility - Improved sensitivity and specificity - Long-term security of supply - Animal-free production <p>For more information see here.</p> <p>Our RabMAb[®] technology is a patented hybridoma-based technology for making rabbit monoclonal antibodies. For details on our patents, please refer to RabMAb[®] patents.</p>

Properties

Form	Liquid
Storage instructions	Shipped at 4°C. Store at +4°C short term (1-2 weeks). Upon delivery aliquot. Store at -20°C long term. Avoid freeze / thaw cycle.
Storage buffer	pH: 7.2 Preservative: 0.01% Sodium azide Constituents: 59% PBS, 40% Glycerol (glycerin, glycerine), 0.05% BSA
Purity	Protein A purified
Clonality	Monoclonal
Clone number	EPR14634

Isotype

IgG

Applications

The Abpromise guarantee

Our **Abpromise guarantee** covers the use of ab189922 in the following tested applications.

The application notes include recommended starting dilutions; optimal dilutions/concentrations should be determined by the end user.

Application	Abreviews	Notes
WB		1/1000 - 1/10000. Detects a band of approximately 26 kDa (predicted molecular weight: 26 kDa).
IHC-P		1/1000. Perform heat mediated antigen retrieval with Tris/EDTA buffer pH 9.0 before commencing with IHC staining protocol.

Application notes

Is unsuitable for ICC/IF.

Target

Function

C1q associates with the proenzymes C1r and C1s to yield C1, the first component of the serum complement system. The collagen-like regions of C1q interact with the Ca(2+)-dependent C1r(2)C1s(2) proenzyme complex, and efficient activation of C1 takes place on interaction of the globular heads of C1q with the Fc regions of IgG or IgM antibody present in immune complexes.

Involvement in disease

Defects in C1QA are the cause of complement component C1qA deficiency (C1QAD) [MIM:120550]. A rare defect resulting in C1 deficiency and impaired activation of the complement classical pathway. C1 deficiency generally leads to severe immune complex disease with features of systemic lupus erythematosus and glomerulonephritis.

Sequence similarities

Contains 1 C1q domain.
Contains 1 collagen-like domain.

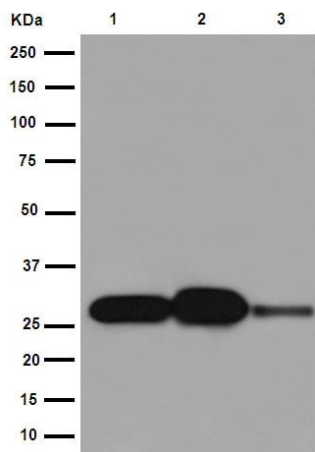
Post-translational modifications

O-linked glycans consist of Glc-Gal disaccharides bound to the oxygen atom of post-translationally added hydroxyl groups.

Cellular localization

Secreted.

Images



Western blot - Anti-C1QA antibody [EPR14634]
(ab189922)

All lanes : Anti-C1QA antibody [EPR14634] (ab189922) at
1/10000 dilution

Lane 1 : Human plasma lysate

Lane 2 : Human serum lysate

Lane 3 : Human spleen tissue lysate

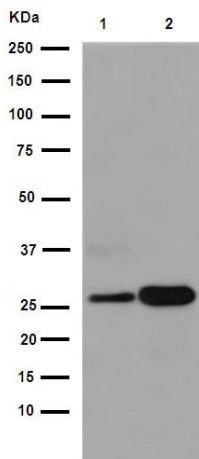
Lysates/proteins at 20 µg per lane.

Secondary

All lanes : Anti-Rabbit IgG (HRP), specific to the non-reduced form
of IgG at 1/1000 dilution

Predicted band size: 26 kDa

Observed band size: 26 kDa



Western blot - Anti-C1QA antibody [EPR14634]
(ab189922)

All lanes : Anti-C1QA antibody [EPR14634] (ab189922) at 1/1000
dilution

Lane 1 : C6 cell lysate

Lane 2 : PC-12 cell lysate

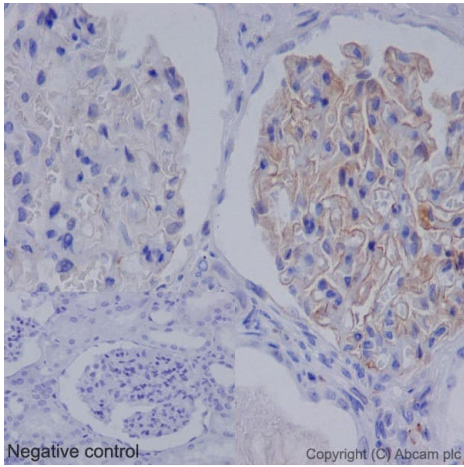
Lysates/proteins at 10 µg per lane.

Secondary

All lanes : Anti-Rabbit IgG (HRP), specific to the non-reduced form
of IgG at 1/1000 dilution

Predicted band size: 26 kDa

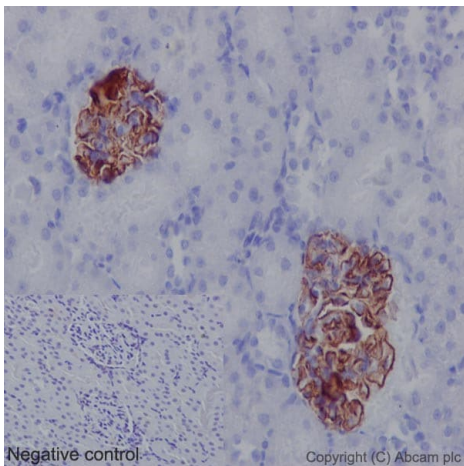
Observed band size: 26 kDa



Immunohistochemical analysis of paraffin-embedded Human kidney tissue labeling C1QA with ab189922 at 1/1000 dilution followed by prediluted HRP Polymer for Rabbit IgG. Counter stained with Hematoxylin.

Perform heat mediated antigen retrieval with Tris/EDTA buffer pH 9.0 before commencing with IHC staining protocol.

Immunohistochemistry (Formalin/PFA-fixed paraffin-embedded sections) - Anti-C1QA antibody
[EPR14634] (ab189922)

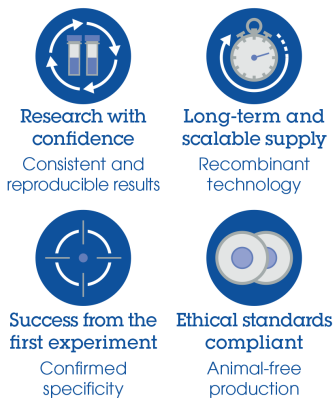


Immunohistochemical analysis of paraffin-embedded Rat kidney tissue labeling C1QA with ab189922 at 1/1000 dilution followed by prediluted HRP Polymer for Rabbit IgG. Counter stained with Hematoxylin.

Perform heat mediated antigen retrieval with Tris/EDTA buffer pH 9.0 before commencing with IHC staining protocol.

Immunohistochemistry (Formalin/PFA-fixed paraffin-embedded sections) - Anti-C1QA antibody
[EPR14634] (ab189922)

Why choose a recombinant antibody?



Anti-C1QA antibody [EPR14634] (ab189922)

Please note: All products are "FOR RESEARCH USE ONLY. NOT FOR USE IN DIAGNOSTIC PROCEDURES"

Our Abpromise to you: Quality guaranteed and expert technical support

- Replacement or refund for products not performing as stated on the datasheet
- Valid for 12 months from date of delivery
- Response to your inquiry within 24 hours
- We provide support in Chinese, English, French, German, Japanese and Spanish
- Extensive multi-media technical resources to help you
- We investigate all quality concerns to ensure our products perform to the highest standards

If the product does not perform as described on this datasheet, we will offer a refund or replacement. For full details of the Abpromise, please visit <https://www.abcam.com/abpromise> or contact our technical team.

Terms and conditions

- Guarantee only valid for products bought direct from Abcam or one of our authorized distributors