

## Product datasheet

# Anti-C2 antibody [EPR17979] ab209900

Recombinant RabMAb

[1 References](#) [3 Images](#)

### Overview

<b>Product name</b>	Anti-C2 antibody [EPR17979]
<b>Description</b>	Rabbit monoclonal [EPR17979] to C2
<b>Host species</b>	Rabbit
<b>Tested applications</b>	<b>Suitable for:</b> WB
<b>Species reactivity</b>	<b>Reacts with:</b> Mouse, Human
<b>Immunogen</b>	Synthetic peptide. This information is proprietary to Abcam and/or its suppliers.
<b>Positive control</b>	WB: Human serum, plasma and fetal kidney lysate; Mouse serum.
<b>General notes</b>	<p>This product is a recombinant monoclonal antibody, which offers several advantages including:</p> <ul style="list-style-type: none"><li>- High batch-to-batch consistency and reproducibility</li><li>- Improved sensitivity and specificity</li><li>- Long-term security of supply</li><li>- Animal-free production</li></ul> <p>For more information <a href="#">see here</a>.</p> <p>Our RabMAb<sup>®</sup> technology is a patented hybridoma-based technology for making rabbit monoclonal antibodies. For details on our patents, please refer to <a href="#">RabMAb<sup>®</sup> patents</a>.</p>

### Properties

<b>Form</b>	Liquid
<b>Storage instructions</b>	Shipped at 4°C. Store at +4°C short term (1-2 weeks). Upon delivery aliquot. Store at -20°C long term. Avoid freeze / thaw cycle.
<b>Storage buffer</b>	pH: 7.2 Preservative: 0.01% Sodium azide Constituents: 59% PBS, 40% Glycerol (glycerin, glycerine), 0.05% BSA
<b>Purity</b>	Protein A purified
<b>Clonality</b>	Monoclonal
<b>Clone number</b>	EPR17979
<b>Isotype</b>	IgG

## Applications

### The Abpromise guarantee

Our **Abpromise guarantee** covers the use of ab209900 in the following tested applications.

The application notes include recommended starting dilutions; optimal dilutions/concentrations should be determined by the end user.

Application	Abreviews	Notes
WB		1/1000. Detects a band of approximately 100 kDa (predicted molecular weight: 83 kDa).

## Target

### Function

Component C2 which is part of the classical pathway of the complement system is cleaved by activated factor C1 into two fragments: C2b and C2a. C2a, a serine protease, then combines with complement factor 4b to generate the C3 or C5 convertase.

### Involvement in disease

Defects in C2 are the cause of complement component 2 deficiency (C2D) [MIM:217000]. A deficiency of the complement classical pathway associated with the development of autoimmune disorders, mainly systemic lupus erythematosus. Skin and joint manifestations are common and renal disease is relatively rare. Patients with complement component 2 deficiency are also reported to have recurrent or invasive infections.

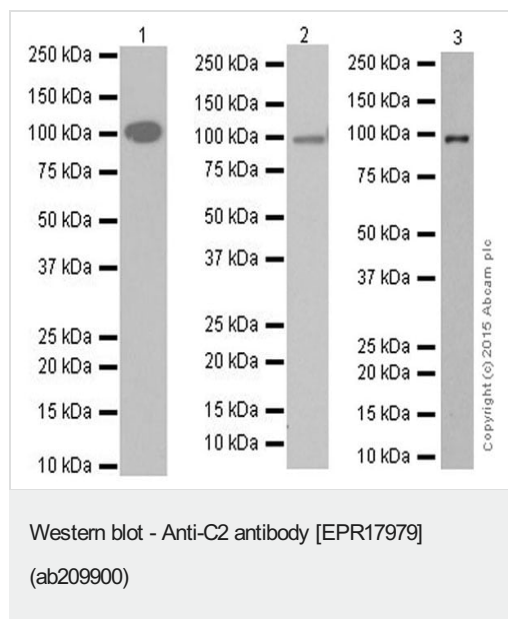
### Sequence similarities

Belongs to the peptidase S1 family.  
Contains 1 peptidase S1 domain.  
Contains 3 Sushi (CCP/SCR) domains.  
Contains 1 VWFA domain.

### Cellular localization

Secreted.

## Images



**All lanes** : Anti-C2 antibody [EPR17979] (ab209900) at 1/1000 dilution

**Lane 1** : Human serum

**Lane 2** : Human plasma

**Lane 3** : Human fetal kidney lysate

Lysates/proteins at 10 µg per lane.

### Secondary

**Lanes 1-2** : Goat Anti-Rabbit IgG Peroxidase Conjugate, specific to the non-reduced form of IgG at 1/10000 dilution

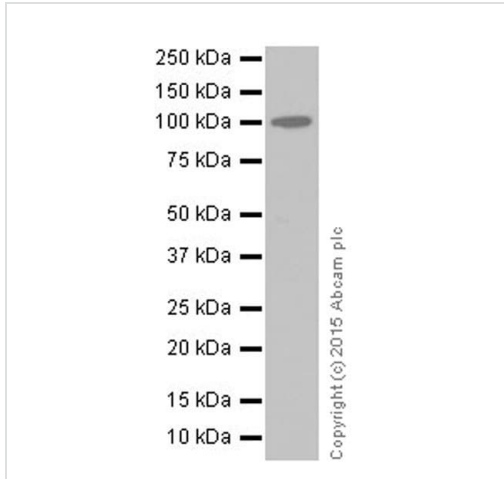
**Lane 3** : Goat Anti-Rabbit IgG Peroxidase Conjugate, specific to the non-reduced form of IgG at 1/1000 dilution

**Predicted band size:** 83 kDa

**Observed band size:** 100 kDa

Blocking/Dilution buffer: 5% NFDm/TBST.

Exposure time: Lane 1/3: 3 minutes; Lane 2: 30 seconds.



Western blot - Anti-C2 antibody [EPR17979]  
(ab209900)

Anti-C2 antibody [EPR17979] (ab209900) at 1/1000 dilution +  
Mouse serum at 10 µg

### Secondary

Goat Anti-Rabbit IgG H&L (HRP) ([ab97051](#)) at 1/100000 dilution

**Predicted band size:** 83 kDa

**Observed band size:** 100 kDa

**Exposure time:** 1 minute

Blocking/Dilution buffer: 5% NFDm/TBST.

Why choose a recombinant antibody?

<p><b>Research with confidence</b> Consistent and reproducible results</p>	<p><b>Long-term and scalable supply</b> Recombinant technology</p>
<p><b>Success from the first experiment</b> Confirmed specificity</p>	<p><b>Ethical standards compliant</b> Animal-free production</p>

Anti-C2 antibody [EPR17979] (ab209900)

**Please note:** All products are "FOR RESEARCH USE ONLY. NOT FOR USE IN DIAGNOSTIC PROCEDURES"

### Our Abpromise to you: Quality guaranteed and expert technical support

- Replacement or refund for products not performing as stated on the datasheet
- Valid for 12 months from date of delivery
- Response to your inquiry within 24 hours
- We provide support in Chinese, English, French, German, Japanese and Spanish

- Extensive multi-media technical resources to help you
- We investigate all quality concerns to ensure our products perform to the highest standards

If the product does not perform as described on this datasheet, we will offer a refund or replacement. For full details of the Abpromise, please visit <https://www.abcam.com/abpromise> or contact our technical team.

### **Terms and conditions**

---

- Guarantee only valid for products bought direct from Abcam or one of our authorized distributors