


Product datasheet

Anti-C20orf112/NOL4L antibody ab237758

[2 References](#) [6 Images](#)

Overview

Product name	Anti-C20orf112/NOL4L antibody
Description	Rabbit polyclonal to C20orf112/NOL4L
Host species	Rabbit
Tested applications	Suitable for: WB, IHC-P, ICC/IF
Species reactivity	Reacts with: Human Predicted to work with: Mouse, Orangutan 
Immunogen	Recombinant fragment corresponding to Human C20orf112/NOL4L aa 100-300. Database link: Q96MY1 Run BLAST with Run BLAST with
Positive control	WB: PC-3, A549, HepG2 and K562 whole cell lysates. IHC-P: Human thyroid, testis, small intestine and adrenal gland tissues. ICC/IF: HeLa cells.
General notes	<p>The Life Science industry has been in the grips of a reproducibility crisis for a number of years. Abcam is leading the way in addressing this with our range of recombinant monoclonal antibodies and knockout edited cell lines for gold-standard validation. Please check that this product meets your needs before purchasing.</p> <p>If you have any questions, special requirements or concerns, please send us an inquiry and/or contact our Support team ahead of purchase. Recommended alternatives for this product can be found below, along with publications, customer reviews and Q&As</p>

Properties

Form	Liquid
Storage instructions	Shipped at 4°C. Store at +4°C short term (1-2 weeks). Upon delivery aliquot. Store at -20°C long term. Avoid freeze / thaw cycle.
Storage buffer	pH: 7.40 Preservative: 0.03% Proclin 300 Constituents: 50% Glycerol (glycerin, glycerine), PBS
Purity	Protein G purified
Purification notes	Purity greater than 95%.
Clonality	Polyclonal

Isotype

IgG

Applications

The Abpromise guarantee

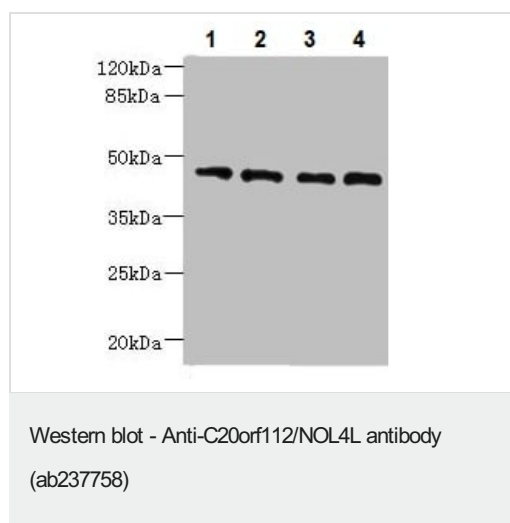
Our **Abpromise guarantee** covers the use of ab237758 in the following tested applications.

The application notes include recommended starting dilutions; optimal dilutions/concentrations should be determined by the end user.

Application	Abreviews	Notes
WB		1/500 - 1/5000. Predicted molecular weight: 47 kDa.
IHC-P		1/20 - 1/200.
ICC/IF		1/50 - 1/200.

Target

Images



All lanes : Anti-C20orf112/NOL4L antibody (ab237758) at 1/500 dilution

Lane 1 : PC-3 (human prostate adenocarcinoma cell line) whole cell lysate

Lane 2 : A549 (human lung carcinoma cell line) whole cell lysate

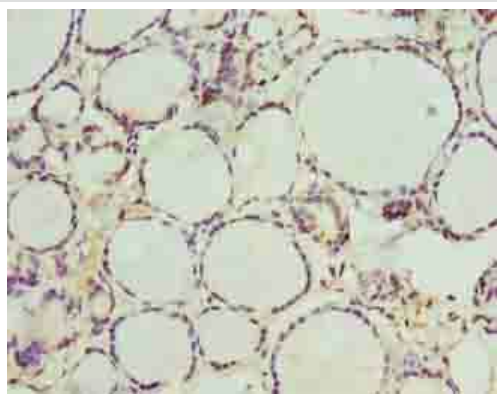
Lane 3 : HepG2 (human liver hepatocellular carcinoma cell line) whole cell lysate

Lane 4 : K562 (human chronic myelogenous leukemia cell line from bone marrow) whole cell lysate

Secondary

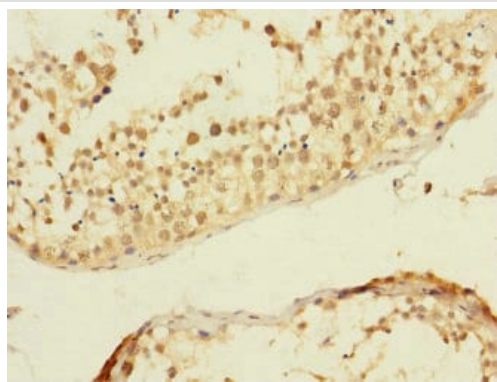
All lanes : Goat polyclonal to Rabbit IgG at 1/10000 dilution

Predicted band size: 47 kDa



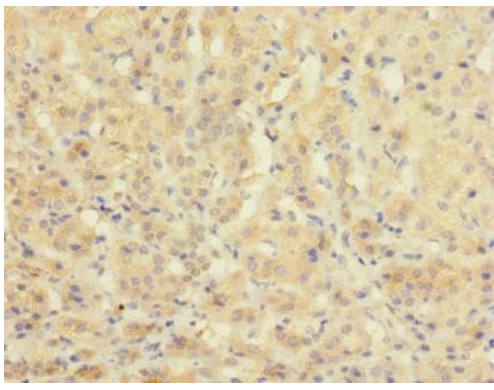
Paraffin-embedded human thyroid tissue stained for C20orf112/NOL4L with ab237758 at 1/100 dilution in immunohistochemical analysis.

Immunohistochemistry (Formalin/PFA-fixed paraffin-embedded sections) - Anti-C20orf112/NOL4L antibody (ab237758)



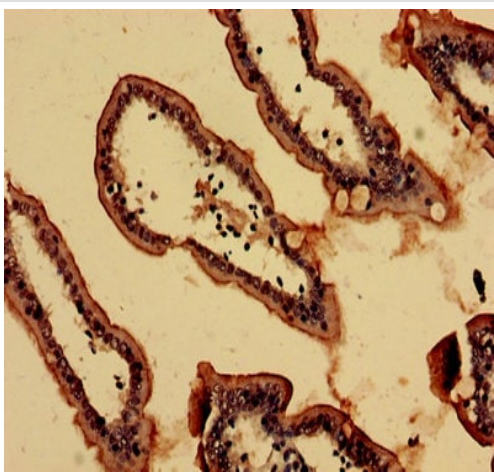
Paraffin-embedded human testis tissue stained for C20orf112/NOL4L with ab237758 at 1/100 dilution in immunohistochemical analysis.

Immunohistochemistry (Formalin/PFA-fixed paraffin-embedded sections) - Anti-C20orf112/NOL4L antibody (ab237758)



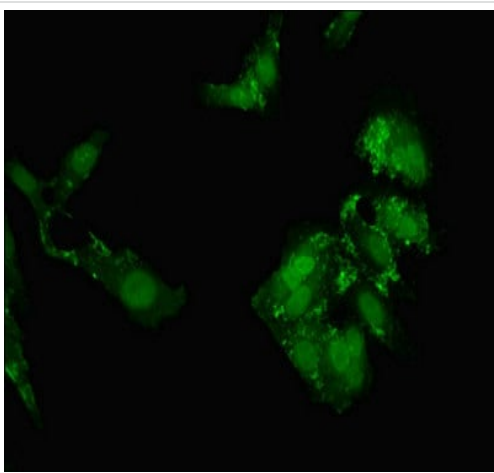
Paraffin-embedded human adrenal gland tissue stained for C20orf112/NOL4L with ab237758 at 1/100 dilution in immunohistochemical analysis.

Immunohistochemistry (Formalin/PFA-fixed paraffin-embedded sections) - Anti-C20orf112/NOL4L antibody (ab237758)



Paraffin-embedded human small intestine tissue stained for C20orf112/NOL4L with ab237758 at 1/100 dilution in immunohistochemical analysis.

Immunohistochemistry (Formalin/PFA-fixed paraffin-embedded sections) - Anti-C20orf112/NOL4L antibody (ab237758)



HeLa (human epithelial cell line from cervix adenocarcinoma) cells stained for C20orf112/NOL4L (green) using ab237758 at 1/100 dilution in ICC/IF, followed by Alexa Fluor 488[®] conjugated Goat Anti-Rabbit IgG (H+L).

Immunocytochemistry/ Immunofluorescence - Anti-C20orf112/NOL4L antibody (ab237758)

Please note: All products are "FOR RESEARCH USE ONLY. NOT FOR USE IN DIAGNOSTIC PROCEDURES"

Our Abpromise to you: Quality guaranteed and expert technical support

- Replacement or refund for products not performing as stated on the datasheet
- Valid for 12 months from date of delivery
- Response to your inquiry within 24 hours

- We provide support in Chinese, English, French, German, Japanese and Spanish
- Extensive multi-media technical resources to help you
- We investigate all quality concerns to ensure our products perform to the highest standards

If the product does not perform as described on this datasheet, we will offer a refund or replacement. For full details of the Abpromise, please visit <https://www.abcam.com/abpromise> or contact our technical team.

Terms and conditions

- Guarantee only valid for products bought direct from Abcam or one of our authorized distributors