




Product datasheet

Anti-C20orf77 antibody ab137246

2 Images

Overview

Product name	Anti-C20orf77 antibody
Description	Rabbit polyclonal to C20orf77
Host species	Rabbit
Tested applications	Suitable for: WB, IP
Species reactivity	Reacts with: Mouse, Human Predicted to work with: Rat, Rabbit, Horse, Chicken, Guinea pig, Cow, Dog, Turkey, Pig, Chimpanzee, Zebrafish, Rhesus monkey, Gorilla, Orangutan 
Immunogen	Synthetic peptide corresponding to Human C20orf77 aa 250-350. Database link: Q9NQG5 <div>  Run BLAST with  Run BLAST with </div>
Positive control	WB: HeLa, HEK-293T, Jurkat and TCMK cell lysates. IP: HeLa cell lysate.
General notes	<p>The Life Science industry has been in the grips of a reproducibility crisis for a number of years. Abcam is leading the way in addressing this with our range of recombinant monoclonal antibodies and knockout edited cell lines for gold-standard validation. Please check that this product meets your needs before purchasing.</p> <p>If you have any questions, special requirements or concerns, please send us an inquiry and/or contact our Support team ahead of purchase. Recommended alternatives for this product can be found below, along with publications, customer reviews and Q&As</p>

Properties

Form	Liquid
Storage instructions	Shipped at 4°C. Upon delivery aliquot and store at -20°C. Avoid freeze / thaw cycles.
Storage buffer	pH: 7 Preservative: 0.09% Sodium azide Constituent: 99% Tris citrate/phosphate pH 7 to 8
Purity	Immunogen affinity purified
Purification notes	ab137246 was affinity purified using an epitope specific to C20orf77 immobilized on solid support .

Clonality	Polyclonal
Isotype	IgG

Applications

The Abpromise guarantee Our **Abpromise guarantee** covers the use of ab137246 in the following tested applications. The application notes include recommended starting dilutions; optimal dilutions/concentrations should be determined by the end user.

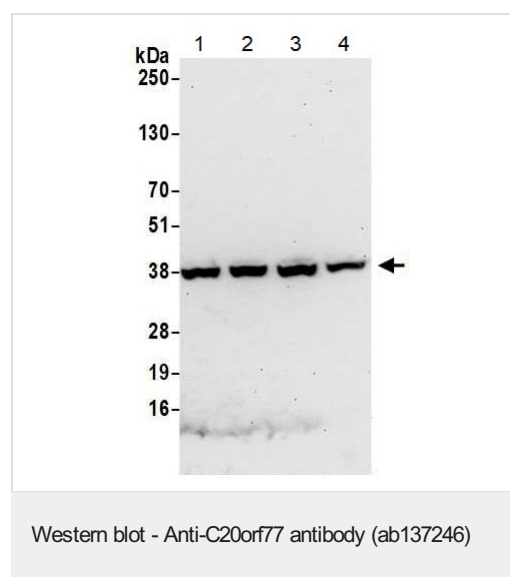
Application	Abreviews	Notes
WB		1/2000 - 1/1000. Predicted molecular weight: 37 kDa.
IP		Use at 2-10 µg/mg of lysate.

Target

Relevance C20orf77 interacts with the phosphorylated C-terminal heptapeptide repeat domain (CTD) of the largest RNA polymerase II subunit POLR2A, and participates in dephosphorylation of the CTD. It is a transcriptional regulator which enhances expression of CCND1. It promotes binding of RNA polymerase II to the CCND1 promoter and to the termination region before the poly-A site but decreases its binding after the poly-A site. It also reverts RNA polymerase II from reading through the 3' end termination site and may allow it to be recruited back to the promoter through promotion of the formation of a chromatin loop. Also enhances the transcription of a number of other cell cycle-related genes including CDK2, CDK4, CDK6 and cyclin-E but not CDKN1A, CDKN1B or cyclin-A. Promotes cell proliferation.

Cellular localization Nuclear

Images



All lanes : Anti-C20orf77 antibody (ab137246) at 0.1 µg/ml

Lane 1 : HeLa (Human cervix adenocarcinoma epithelial cell) whole cell lysate

Lane 2 : HEK-293T (Human epithelial cell line from embryonic kidney transformed with large T antigen) whole cell lysate

Lane 3 : Jurkat (Human T cell leukemia cell line from peripheral blood) whole cell lysate

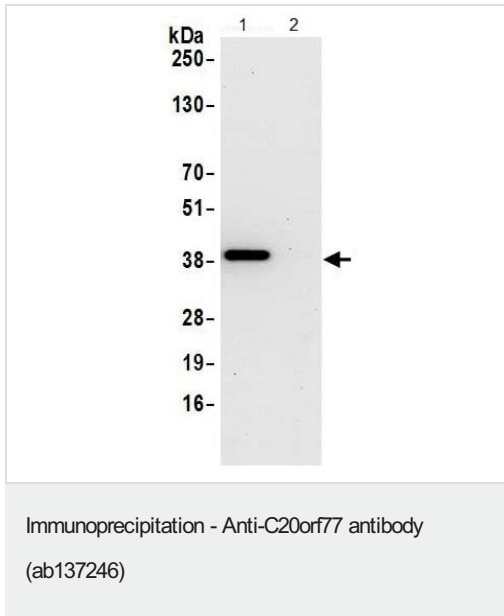
Lane 4 : TCMK-1 (Mouse kidney epithelial cell line) whole cell lysate

Lysates/proteins at 50 µg per lane.

Predicted band size: 37 kDa

Exposure time: 10 seconds

Western blot analysis labeling C20orf77 with ab137246 at 0.1 ug/ml.



Lane 1: ab137246

Lane 2: Control IgG

Immunoprecipitation of C20orf77 from whole cell lysate (1.0 mg per IP reaction; 20% of IP loaded) of HeLa cells prepared using NETN lysis buffer. ab137246 was used for IP at 3 µg per reaction. For blotting immunoprecipitated RPRD1B, ab137246 was used at 1 µg/ml. Detection was by chemiluminescence with an exposure time of 10 seconds.

Please note: All products are "FOR RESEARCH USE ONLY. NOT FOR USE IN DIAGNOSTIC PROCEDURES"

Our Abpromise to you: Quality guaranteed and expert technical support

- Replacement or refund for products not performing as stated on the datasheet
- Valid for 12 months from date of delivery
- Response to your inquiry within 24 hours
- We provide support in Chinese, English, French, German, Japanese and Spanish
- Extensive multi-media technical resources to help you
- We investigate all quality concerns to ensure our products perform to the highest standards

If the product does not perform as described on this datasheet, we will offer a refund or replacement. For full details of the Abpromise, please visit <https://www.abcam.com/abpromise> or contact our technical team.

Terms and conditions

- Guarantee only valid for products bought direct from Abcam or one of our authorized distributors