


Product datasheet

Anti-C21orf33 antibody [EPR13213] ab181366

Recombinant RabMAb

[1 References](#) [6 Images](#)

Overview

Product name	Anti-C21orf33 antibody [EPR13213]
Description	Rabbit monoclonal [EPR13213] to C21orf33
Host species	Rabbit
Tested applications	Suitable for: WB, IHC-P, ICC/IF, IP Unsuitable for: Flow Cyt
Species reactivity	Reacts with: Human Predicted to work with: Mouse, Rat 
Immunogen	Recombinant fragment. This information is proprietary to Abcam and/or its suppliers.
Positive control	A549, HeLa, HepG2 and K562 cell lysates, Human heart tissue, Human liver tissue and HepG2 cells
General notes	<p>This product is a recombinant monoclonal antibody, which offers several advantages including:</p> <ul style="list-style-type: none"> - High batch-to-batch consistency and reproducibility - Improved sensitivity and specificity - Long-term security of supply - Animal-free production <p>For more information see here.</p> <p>Our RabMAb[®] technology is a patented hybridoma-based technology for making rabbit monoclonal antibodies. For details on our patents, please refer to RabMAb[®] patents.</p>

Properties

Form	Liquid
Storage instructions	Shipped at 4°C. Store at +4°C short term (1-2 weeks). Upon delivery aliquot. Store at -20°C long term. Avoid freeze / thaw cycle.
Storage buffer	pH: 7.20 Preservative: 0.01% Sodium azide Constituents: 9% PBS, 40% Glycerol (glycerin, glycerine), 0.05% BSA, 50% Tissue culture supernatant
Purity	Tissue culture supernatant
Clonality	Monoclonal

Clone number EPR13213

Isotype IgG

Applications

The Abpromise guarantee Our **Abpromise guarantee** covers the use of ab181366 in the following tested applications.

The application notes include recommended starting dilutions; optimal dilutions/concentrations should be determined by the end user.

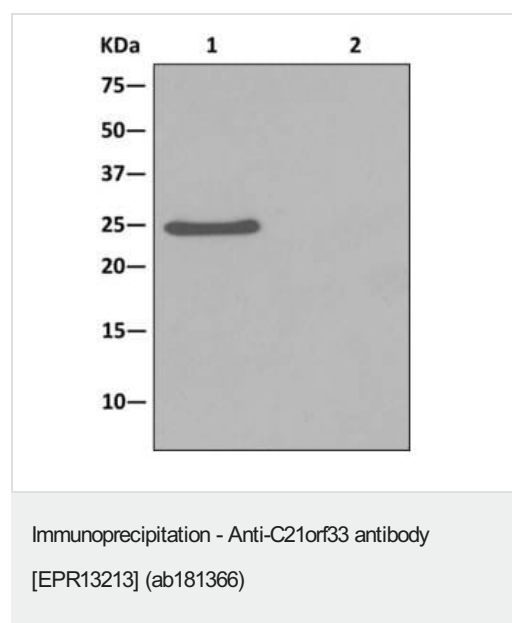
Application	Abreviews	Notes
WB		1/5000 - 1/10000. Predicted molecular weight: 25 kDa.
IHC-P		1/50 - 1/100. Perform heat mediated antigen retrieval before commencing with IHC staining protocol. Perform heat mediated antigen retrieval, heat up to 98 degrees C, below boiling, and then let cool for 10-20 min, before commencing with IHC staining.
ICC/IF		1/100 - 1/250.
IP		1/10 - 1/100.

Application notes Is unsuitable for Flow Cyt.

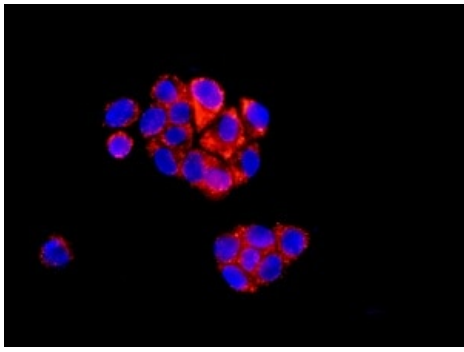
Target

Cellular localization Mitochondrial

Images

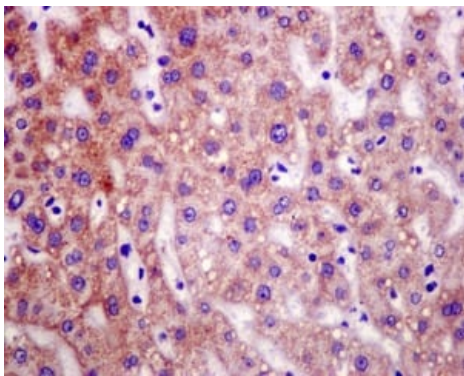


Western blot analysis on immunoprecipitation pellet from HepG2 cell lysate (lane 1) or 1XPBS (lane 2) labeling C21orf33 using ab181366 at a 1/10 dilution and HRP-conjugated anti-rabbit IgG preferentially detecting the non-reduced form of rabbit IgG.



Immunocytochemistry/ Immunofluorescence - Anti-C21orf33 antibody [EPR13213] (ab181366)

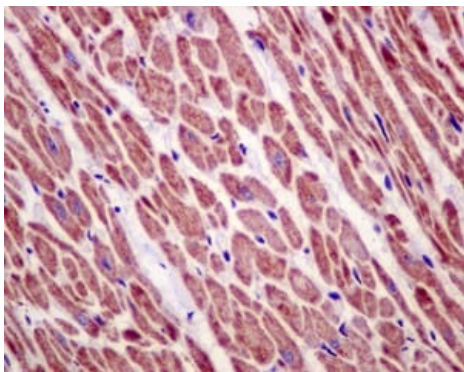
Immunofluorescent staining of HepG2 cells labeling C21orf33 using ab181366 at a 1/100 dilution (red) with DAPI nuclear staining (blue).



Immunohistochemistry (Formalin/PFA-fixed paraffin-embedded sections) - Anti-C21orf33 antibody [EPR13213] (ab181366)

Immunohistochemical analysis of paraffin-embedded Human liver tissue labeling C21orf33 using ab181366 at a 1/50 dilution

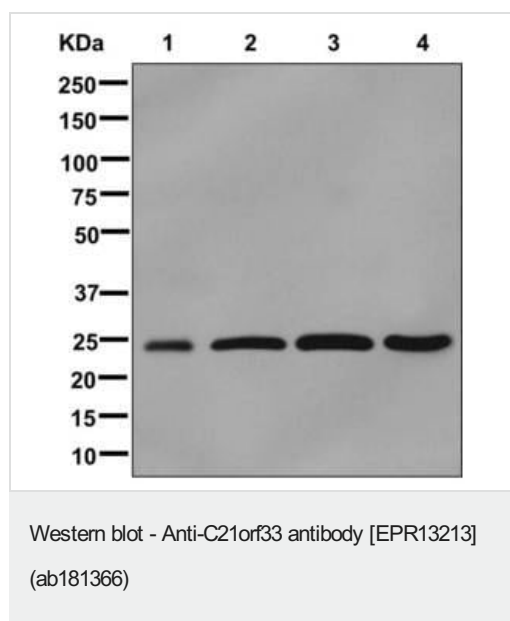
Perform heat mediated antigen retrieval before commencing with IHC staining protocol.



Immunohistochemistry (Formalin/PFA-fixed paraffin-embedded sections) - Anti-C21orf33 antibody [EPR13213] (ab181366)

Immunohistochemical analysis of paraffin-embedded Human heart tissue labeling C21orf33 using ab181366 at a 1/50 dilution.

Perform heat mediated antigen retrieval before commencing with IHC staining protocol.



All lanes : Anti-C21orf33 antibody [EPR13213] (ab181366) at 1/5000 dilution

Lane 1 : A549 cell lysate

Lane 2 : HeLa cell lysate

Lane 3 : HepG2 cell lysate

Lane 4 : K562 cell lysate

Lysates/proteins at 10 µg per lane.

Predicted band size: 25 kDa

Why choose a recombinant antibody?

Research with confidence
Consistent and reproducible results

Long-term and scalable supply
Recombinant technology

Success from the first experiment
Confirmed specificity

Ethical standards compliant
Animal-free production

Anti-C21orf33 antibody [EPR13213] (ab181366)

Please note: All products are "FOR RESEARCH USE ONLY. NOT FOR USE IN DIAGNOSTIC PROCEDURES"

Our Abpromise to you: Quality guaranteed and expert technical support

- Replacement or refund for products not performing as stated on the datasheet
- Valid for 12 months from date of delivery
- Response to your inquiry within 24 hours
- We provide support in Chinese, English, French, German, Japanese and Spanish
- Extensive multi-media technical resources to help you
- We investigate all quality concerns to ensure our products perform to the highest standards

If the product does not perform as described on this datasheet, we will offer a refund or replacement. For full details of the Abpromise, please visit <https://www.abcam.com/abpromise> or contact our technical team.

Terms and conditions

- Guarantee only valid for products bought direct from Abcam or one of our authorized distributors