

## Product datasheet

### Anti-C4b antibody [EPR11203] ab168358

Recombinant RabMAb

[2 References](#) [3 Images](#)

#### Overview

<b>Product name</b>	Anti-C4b antibody [EPR11203]
<b>Description</b>	Rabbit monoclonal [EPR11203] to C4b
<b>Host species</b>	Rabbit
<b>Tested applications</b>	<b>Suitable for:</b> Flow Cyt (Intra), WB <b>Unsuitable for:</b> ICC/IF, IHC-P or IP
<b>Species reactivity</b>	<b>Reacts with:</b> Human
<b>Immunogen</b>	Recombinant fragment corresponding to Human C4b.
<b>Positive control</b>	Human serum, Human fetal liver and HepG2 lysates; HepG2 cells.
<b>General notes</b>	<p>This product is a recombinant monoclonal antibody, which offers several advantages including:</p> <ul style="list-style-type: none"> <li>- High batch-to-batch consistency and reproducibility</li> <li>- Improved sensitivity and specificity</li> <li>- Long-term security of supply</li> <li>- Animal-free production</li> </ul> <p>For more information <a href="#">see here</a>.</p> <p>Our RabMAb<sup>®</sup> technology is a patented hybridoma-based technology for making rabbit monoclonal antibodies. For details on our patents, please refer to <a href="#">RabMAb<sup>®</sup> patents</a>.</p> <p>Mouse, Rat: We have preliminary internal testing data to indicate this antibody may not react with these species. Please contact us for more information.</p>

#### Properties

<b>Form</b>	Liquid
<b>Storage instructions</b>	Shipped at 4°C. Store at +4°C short term (1-2 weeks). Upon delivery aliquot. Store at -20°C long term.
<b>Storage buffer</b>	<p>pH: 7.2</p> <p>Preservative: 0.01% Sodium azide</p> <p>Constituents: 9% PBS, 40% Glycerol (glycerin, glycerine), 0.05% BSA, 50% Tissue culture supernatant</p>
<b>Purity</b>	Protein A purified

<b>Clonality</b>	Monoclonal
<b>Clone number</b>	EPR11203
<b>Isotype</b>	IgG

## Applications

**The Abpromise guarantee** Our **Abpromise guarantee** covers the use of ab168358 in the following tested applications. The application notes include recommended starting dilutions; optimal dilutions/concentrations should be determined by the end user.

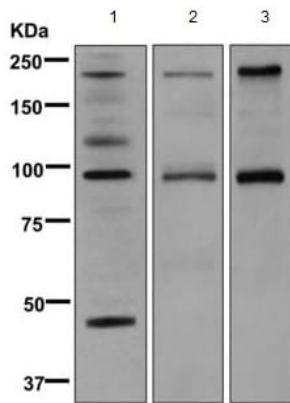
Application	Abreviews	Notes
<b>Flow Cyt (Intra)</b>		1/10 - 1/100. <b>ab172730</b> - Rabbit monoclonal IgG, is suitable for use as an isotype control with this antibody.
<b>WB</b>		1/1000 - 1/10000. Predicted molecular weight: 193 kDa.

**Application notes** Is unsuitable for ICC/IF, IHC-P or IP.

## Target

<b>Function</b>	<p>C4 plays a central role in the activation of the classical pathway of the complement system. It is processed by activated C1 which removes from the alpha chain the C4a anaphylatoxin. The remaining alpha chain fragment C4b is the major activation product and is an essential subunit of the C3 convertase (C4b2a) and the C5 convertase (C3bC4b2a) enzymes of the classical complement pathway.</p> <p>Derived from proteolytic degradation of complement C4, C4a anaphylatoxin is a mediator of local inflammatory process. It induces the contraction of smooth muscle, increases vascular permeability and causes histamine release from mast cells and basophilic leukocytes.</p>
<b>Sequence similarities</b>	<p>Contains 1 anaphylatoxin-like domain.</p> <p>Contains 1 NTR domain.</p>
<b>Post-translational modifications</b>	<p>Prior to secretion, the single-chain precursor is enzymatically cleaved to yield the non-identical chains (alpha, beta and gamma). During activation, the alpha chain is cleaved by C1 into C4a and C4b, and C4b stays linked to the beta and gamma chains. Further degradation of C4b by C1 into the inactive fragments C4c and C4d blocks the generation of C3 convertase.</p>
<b>Cellular localization</b>	Secreted.

## Images



Western blot - Anti-C4b antibody [EPR11203]  
(ab168358)

**All lanes** : Anti-C4b antibody [EPR11203] (ab168358) at 1/1000 dilution

**Lane 1** : Human serum lysate

**Lane 2** : Human fetal liver lysate

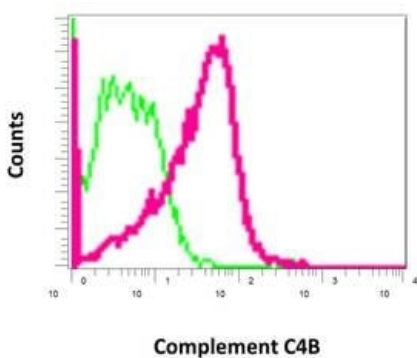
**Lane 3** : HepG2 cell lysate

Lysates/proteins at 10 µg per lane.

#### Secondary

**All lanes** : HRP labeled goat anti-rabbit at 1/2000 dilution

**Predicted band size:** 193 kDa



Flow Cytometry (Intracellular) - Anti-C4b antibody  
[EPR11203] (ab168358)

Intracellular flow cytometric analysis of permeabilized HepG2 cells labeling C4b with ab168358 at 1/10 dilution (red) compared to a rabbit IgG negative control (green).

### Why choose a recombinant antibody?



**Research with confidence**  
Consistent and reproducible results



**Long-term and scalable supply**  
Recombinant technology



**Success from the first experiment**  
Confirmed specificity



**Ethical standards compliant**  
Animal-free production

Anti-C4b antibody [EPR11203] (ab168358)

**Please note:** All products are "FOR RESEARCH USE ONLY. NOT FOR USE IN DIAGNOSTIC PROCEDURES"

### Our Abpromise to you: Quality guaranteed and expert technical support

---

- Replacement or refund for products not performing as stated on the datasheet
- Valid for 12 months from date of delivery
- Response to your inquiry within 24 hours
- We provide support in Chinese, English, French, German, Japanese and Spanish
- Extensive multi-media technical resources to help you
- We investigate all quality concerns to ensure our products perform to the highest standards

If the product does not perform as described on this datasheet, we will offer a refund or replacement. For full details of the Abpromise, please visit <https://www.abcam.com/abpromise> or contact our technical team.

### Terms and conditions

---

- Guarantee only valid for products bought direct from Abcam or one of our authorized distributors