

Product datasheet

Anti-C9 antibody [EPR11232] ab168345

Recombinant RabMAb

[1 References](#) [4 Images](#)

Overview

| | |
|----------------------------|--|
| Product name | Anti-C9 antibody [EPR11232] |
| Description | Rabbit monoclonal [EPR11232] to C9 |
| Host species | Rabbit |
| Tested applications | Suitable for: WB, IHC-P, IP Unsuitable for: ICC/IF |
| Species reactivity | Reacts with: Human Does not react with: Mouse, Rat |
| Immunogen | Recombinant fragment corresponding to Human C9. Database link: P02748 |
| Positive control | Human fetal liver, Human angioneoplasm, Human placenta, Human serum and Human plasma lysates, Human lung tissue |
| General notes | <p>This product is a recombinant monoclonal antibody, which offers several advantages including:</p> <ul style="list-style-type: none">- High batch-to-batch consistency and reproducibility- Improved sensitivity and specificity- Long-term security of supply- Animal-free production <p>For more information see here.</p> <p>Our RabMAb[®] technology is a patented hybridoma-based technology for making rabbit monoclonal antibodies. For details on our patents, please refer to RabMAb[®] patents.</p> |

Properties

| | |
|-----------------------------|--|
| Form | Liquid |
| Storage instructions | Shipped at 4°C. Store at +4°C short term (1-2 weeks). Upon delivery aliquot. Store at -20°C long term. Avoid freeze / thaw cycle. |
| Storage buffer | pH: 7.2 Preservative: 0.01% Sodium azide Constituents: 9% PBS, 40% Glycerol (glycerin, glycerine), 0.05% BSA, 50% Tissue culture supernatant |
| Purity | Protein A purified |

| | |
|---------------------|------------|
| Clonality | Monoclonal |
| Clone number | EPR11232 |
| Isotype | IgG |

Applications

The Abpromise guarantee Our **Abpromise guarantee** covers the use of ab168345 in the following tested applications. The application notes include recommended starting dilutions; optimal dilutions/concentrations should be determined by the end user.

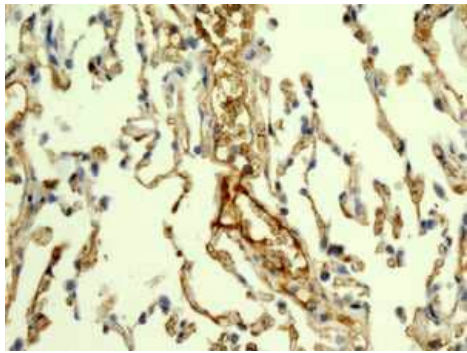
| Application | Abreviews | Notes |
|--------------|-----------|---|
| WB | | 1/1000 - 1/5000. Predicted molecular weight: 63 kDa. |
| IHC-P | | 1/100 - 1/250. Perform heat mediated antigen retrieval with citrate buffer pH 6 before commencing with IHC staining protocol. |
| IP | | 1/10 - 1/100. |

Application notes Is unsuitable for ICC/IF.

Target

| | |
|---|--|
| Function | Constituent of the membrane attack complex (MAC) that plays a key role in the innate and adaptive immune response by forming pores in the plasma membrane of target cells. C9 is the pore-forming subunit of the MAC. |
| Tissue specificity | Plasma. |
| Involvement in disease | Defects in C9 are a cause of complement component 9 deficiency (C9D) [MIM:613825]. A rare defect of the complement classical pathway associated with susceptibility to severe recurrent infections, predominantly by <i>Neisseria gonorrhoeae</i> or <i>Neisseria meningitidis</i> . |
| Sequence similarities | Belongs to the complement C6/C7/C8/C9 family. Contains 1 EGF-like domain. Contains 1 LDL-receptor class A domain. Contains 1 MACPF domain. Contains 1 TSP type-1 domain. |
| Post-translational modifications | Thrombin cleaves factor C9 to produce C9a and C9b. Phosphorylation sites are present in the extracellular medium. |
| Cellular localization | Secreted. Cell membrane. Secreted as soluble monomer. Oligomerizes at target membranes, forming a pre-pore. A conformation change then leads to the formation of a 100 Angstrom diameter pore. |

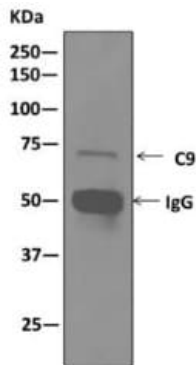
Images



Immunohistochemistry (Formalin/PFA-fixed paraffin-embedded sections) - Anti-C9 antibody [EPR11232] (ab168345)

Immunohistochemical analysis of paraffin embedded Human lung tissue labeling C9 with ab168345 at a 1/100 dilution.

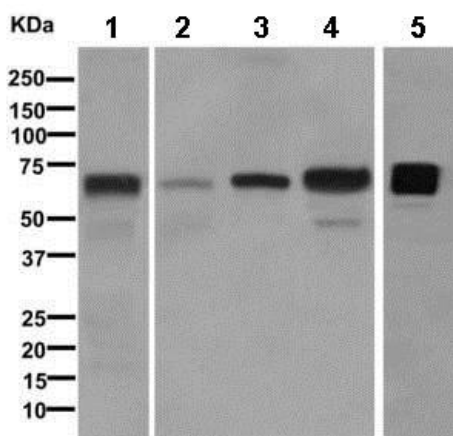
Perform heat mediated antigen retrieval with citrate buffer pH 6 before commencing with IHC staining protocol.



Immunoprecipitation - Anti-C9 antibody [EPR11232] (ab168345)

Immunoprecipitation: Western blot analysis on immunoprecipitation pellet from Human plasma cell lysate using ab168345 at a 1/10 dilution.

Anti-C9 antibody [EPR11232] (ab168345) at 1/10 dilution + Human plasma cell lysate



Western blot - Anti-C9 antibody [EPR11232] (ab168345)

All lanes : Anti-ZNF239 antibody (**ab118345**) at 1/1000 dilution

Lane 1 : Human fetal liver lysate

Lane 2 : Human angioneoplasm lysate

Lane 3 : Human placenta lysate

Lane 4 : Human serum lysate

Lane 5 : Human plasma lysate

Lysates/proteins at 10 µg per lane.

Predicted band size: 63 kDa

Why choose a recombinant antibody?

Research with confidence
Consistent and reproducible results

Long-term and scalable supply
Recombinant technology

Success from the first experiment
Confirmed specificity

Ethical standards compliant
Animal-free production

Anti-C9 antibody [EPR11232] (ab168345)

Please note: All products are "FOR RESEARCH USE ONLY. NOT FOR USE IN DIAGNOSTIC PROCEDURES"

Our Abpromise to you: Quality guaranteed and expert technical support

- Replacement or refund for products not performing as stated on the datasheet
- Valid for 12 months from date of delivery
- Response to your inquiry within 24 hours
- We provide support in Chinese, English, French, German, Japanese and Spanish
- Extensive multi-media technical resources to help you
- We investigate all quality concerns to ensure our products perform to the highest standards

If the product does not perform as described on this datasheet, we will offer a refund or replacement. For full details of the Abpromise, please visit <https://www.abcam.com/abpromise> or contact our technical team.

Terms and conditions

- Guarantee only valid for products bought direct from Abcam or one of our authorized distributors