


Anti-CA150 antibody ab10481

2 Images

Overview

Product name	Anti-CA150 antibody
Description	Rabbit polyclonal to CA150
Host species	Rabbit
Tested applications	Suitable for: WB, IHC-P
Species reactivity	Reacts with: Mouse, Human Predicted to work with: Chimpanzee, Gorilla 
Immunogen	Synthetic peptide corresponding to Human CA150 aa 1-100. Database link: 10915
Positive control	WB: HeLa and HEK293T cells. IHC-P: human breast carcinoma, mouse squamous cell carcinoma
General notes	<p>The Life Science industry has been in the grips of a reproducibility crisis for a number of years. Abcam is leading the way in addressing this with our range of recombinant monoclonal antibodies and knockout edited cell lines for gold-standard validation. Please check that this product meets your needs before purchasing.</p> <p>If you have any questions, special requirements or concerns, please send us an inquiry and/or contact our Support team ahead of purchase. Recommended alternatives for this product can be found below, along with publications, customer reviews and Q&As</p>

Properties

Form	Liquid
Storage instructions	Shipped at 4°C. Upon delivery aliquot and store at -20°C. Avoid freeze / thaw cycles.
Storage buffer	pH: 7 Preservative: 0.1% Sodium azide Constituents: 0.021% PBS, 1.764% Sodium citrate, 1.815% Tris
Purity	Immunogen affinity purified
Purification notes	Antibodies were affinity purified using the peptide immobilized on solid support.
Clonality	Polyclonal
Isotype	IgG

Applications

The Abpromise guarantee

Our **Abpromise guarantee** covers the use of ab10481 in the following tested applications.

The application notes include recommended starting dilutions; optimal dilutions/concentrations should be determined by the end user.

Application	Abreviews	Notes
WB		1/1000 - 1/10000. Detects a band of approximately 150 kDa (predicted molecular weight: 150 kDa).
IHC-P		1/1000 - 1/5000. Perform heat mediated antigen retrieval with citrate buffer pH 6 before commencing with IHC staining protocol.

Target

Function

Transcription factor that binds RNA polymerase II and inhibits the elongation of transcripts from target promoters. Regulates transcription elongation in a TATA box-dependent manner. Necessary for TAT-dependent activation of the human immunodeficiency virus type 1 (HIV-1) promoter.

Tissue specificity

Detected in brain neurons.

Sequence similarities

Contains 6 FF domains.

Contains 3 WW domains.

Domain

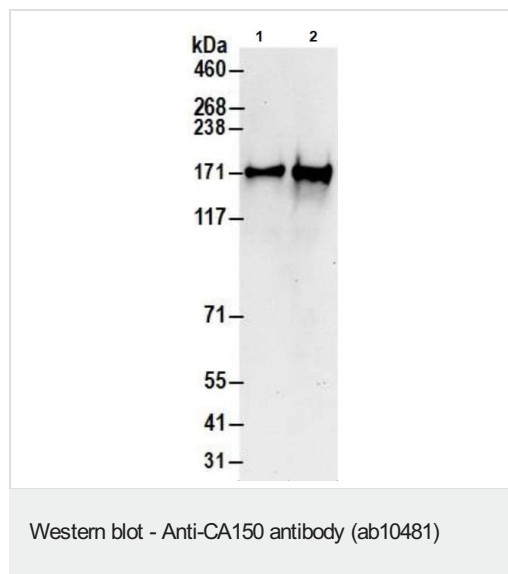
The FF domains bind the phosphorylated C-terminus of the largest subunit of RNA polymerase II, probably mediate interaction with HTATSF1 and preferentially bind peptides with the consensus sequence [DE](2-5)-[FWY]-[DE](2-5).

The WW domains bind Pro-rich domains.

Cellular localization

Nucleus.

Images



All lanes : Anti-CA150 antibody (ab10481) at 1/10000 dilution

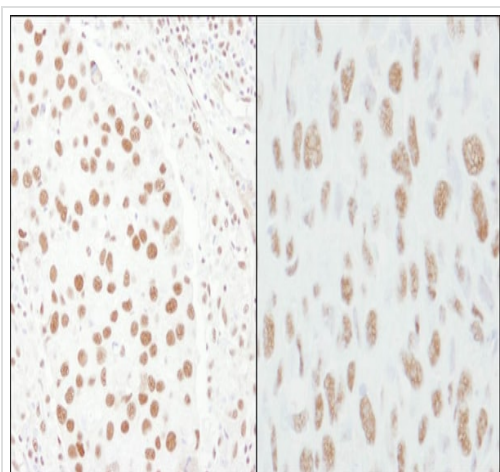
Lane 1 : HeLa Whole cell lysate

Lane 2 : HEK293T Whole cell lysate

Lysates/proteins at 50 µg per lane.

Predicted band size: 150 kDa

Detection: Chemiluminescence with an exposure time of 10 seconds.



Immunohistochemistry (Formalin/PFA-fixed paraffin-embedded sections) analysis of human breast carcinoma (left) and mouse squamous cell carcinoma (right) tissues labelling CA150 at 1/1000 (1µg/ml). Detection: DAB.

Immunohistochemistry (Formalin/PFA-fixed paraffin-embedded sections) - Anti-CA150 antibody (ab10481)

Please note: All products are "FOR RESEARCH USE ONLY. NOT FOR USE IN DIAGNOSTIC PROCEDURES"

Our Abpromise to you: Quality guaranteed and expert technical support

- Replacement or refund for products not performing as stated on the datasheet
- Valid for 12 months from date of delivery
- Response to your inquiry within 24 hours
- We provide support in Chinese, English, French, German, Japanese and Spanish
- Extensive multi-media technical resources to help you
- We investigate all quality concerns to ensure our products perform to the highest standards

If the product does not perform as described on this datasheet, we will offer a refund or replacement. For full details of the Abpromise, please visit <https://www.abcam.com/abpromise> or contact our technical team.

Terms and conditions

- Guarantee only valid for products bought direct from Abcam or one of our authorized distributors