


Product datasheet

Anti-Calbindin antibody, prediluted ab53642

1 Image

Overview

Product name	Anti-Calbindin antibody, prediluted
Description	Rabbit polyclonal to Calbindin, prediluted
Host species	Rabbit
Tested applications	Suitable for: IHC-P
Species reactivity	Reacts with: Human Predicted to work with: Mouse, Rat, Rabbit, Horse, Chicken, Hamster, Cow, Xenopus laevis, Orangutan 
Immunogen	Synthetic peptide within Human Calbindin aa 150-250. The exact sequence is proprietary. Database link: P05937
Positive control	Rat brain, human cerebellum.
General notes	This product is FOR RESEARCH USE ONLY. For commercial use, please contact partnerships@abcam.com. The Life Science industry has been in the grips of a reproducibility crisis for a number of years. Abcam is leading the way in addressing this with our range of recombinant monoclonal antibodies and knockout edited cell lines for gold-standard validation. Please check that this product meets your needs before purchasing. If you have any questions, special requirements or concerns, please send us an inquiry and/or contact our Support team ahead of purchase. Recommended alternatives for this product can be found below, along with publications, customer reviews and Q&As

Properties

Form	Liquid
Storage instructions	Shipped at 4°C. Store at +4°C.
Storage buffer	pH: 7.60 Preservative: 0.1% Sodium azide Constituents: Tris buffered saline, 1% BSA
Purity	Immunogen affinity purified
Clonality	Polyclonal
Isotype	IgG

Applications

The Abpromise guarantee

Our **Abpromise guarantee** covers the use of ab53642 in the following tested applications.

The application notes include recommended starting dilutions; optimal dilutions/concentrations should be determined by the end user.

Application	Abreviews	Notes
IHC-P		1/1. Perform heat mediated antigen retrieval with citrate buffer pH 6 before commencing with IHC staining protocol. Staining of formalin-fixed tissues requires boiling tissue sections in 10mM citrate buffer, pH 6.0 for 10 min followed by cooling at RT for 20 min.

Target

Function

Buffers cytosolic calcium. May stimulate a membrane $\text{Ca}(2+)\text{-ATPase}$ and a 3',5'-cyclic nucleotide phosphodiesterase.

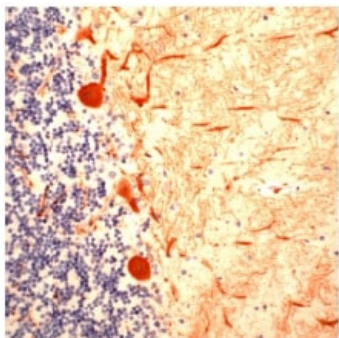
Sequence similarities

Belongs to the calbindin family.
Contains 5 EF-hand domains.

Domain

This protein has four functional calcium-binding sites; potential sites II and VI have lost affinity for calcium.

Images



Ab53642 at a ready to use dilution staining human cerebellum; formalin fixed, paraffin embedded.

Immunohistochemistry (Formalin/PFA-fixed paraffin-embedded sections) - Anti-Calbindin antibody, prediluted (ab53642)

Please note: All products are "FOR RESEARCH USE ONLY. NOT FOR USE IN DIAGNOSTIC PROCEDURES"

Our Abpromise to you: Quality guaranteed and expert technical support

- Replacement or refund for products not performing as stated on the datasheet
- Valid for 12 months from date of delivery

- Response to your inquiry within 24 hours
- We provide support in Chinese, English, French, German, Japanese and Spanish
- Extensive multi-media technical resources to help you
- We investigate all quality concerns to ensure our products perform to the highest standards

If the product does not perform as described on this datasheet, we will offer a refund or replacement. For full details of the Abpromise, please visit <https://www.abcam.com/abpromise> or contact our technical team.

Terms and conditions

- Guarantee only valid for products bought direct from Abcam or one of our authorized distributors