


Product datasheet

Anti-Calcium-independent Phospholipase A2/PLA2G6 antibody ab244247

3 Images

Overview

Product name	Anti-Calcium-independent Phospholipase A2/PLA2G6 antibody
Description	Rabbit polyclonal to Calcium-independent Phospholipase A2/PLA2G6
Host species	Rabbit
Tested applications	Suitable for: WB, ICC/IF
Species reactivity	Reacts with: Human Predicted to work with: Mouse, Rat 
Immunogen	Recombinant fragment corresponding to Human Calcium-independent Phospholipase A2/PLA2G6 aa 100-250. Database link: O60733 Run BLAST with Run BLAST with
Positive control	WB: HEL cell lysate. Calcium-independent Phospholipase A2/PLA2G6 overexpression HEK-293T cell lysate. ICC/IF: A431 cells.
General notes	<p>The Life Science industry has been in the grips of a reproducibility crisis for a number of years. Abcam is leading the way in addressing this with our range of recombinant monoclonal antibodies and knockout edited cell lines for gold-standard validation. Please check that this product meets your needs before purchasing.</p> <p>If you have any questions, special requirements or concerns, please send us an inquiry and/or contact our Support team ahead of purchase. Recommended alternatives for this product can be found below, along with publications, customer reviews and Q&As</p>

Properties

Form	Liquid
Storage instructions	Shipped at 4°C. Store at +4°C short term (1-2 weeks). Upon delivery aliquot. Store at -20°C long term. Avoid freeze / thaw cycle.
Storage buffer	pH: 7.20 Preservative: 0.02% Sodium azide Constituents: PBS, 40% Glycerol (glycerin, glycerine)
Purity	Immunogen affinity purified

Clonality	Polyclonal
Isotype	IgG

Applications

The Abpromise guarantee Our **Abpromise guarantee** covers the use of ab244247 in the following tested applications.

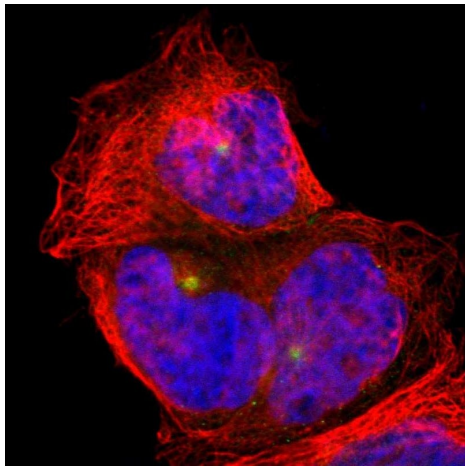
The application notes include recommended starting dilutions; optimal dilutions/concentrations should be determined by the end user.

Application	Abreviews	Notes
WB		Use a concentration of 0.04 - 0.4 µg/ml. Predicted molecular weight: 90 kDa.
ICC/IF		Use a concentration of 0.25 - 2 µg/ml. Fixation/Permeabilization: PFA/Triton X-100.

Target

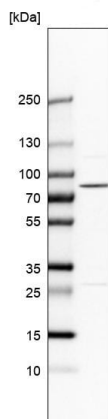
Function	Catalyzes the release of fatty acids from phospholipids. It has been implicated in normal phospholipid remodeling, nitric oxide-induced or vasopressin-induced arachidonic acid release and in leukotriene and prostaglandin production. May participate in fas mediated apoptosis and in regulating transmembrane ion flux in glucose-stimulated B-cells. Has a role in cardiolipin (CL) deacylation. Required for both speed and directionality of monocyte MCP1/CCL2-induced chemotaxis through regulation of F-actin polymerization at the pseudopods. Isoform ankyrin-iPLA2-1 and isoform ankyrin-iPLA2-2, which lack the catalytic domain, are probably involved in the negative regulation of iPLA2 activity.
Tissue specificity	Four different transcripts were found to be expressed in a distinct tissue distribution.
Involvement in disease	Neurodegeneration with brain iron accumulation 2B Neurodegeneration with brain iron accumulation 2A Parkinson disease 14
Sequence similarities	Contains 7 ANK repeats. Contains 1 patatin domain.
Cellular localization	Cytoplasm and Membrane. Recruited to the membrane-enriched pseudopod upon MCP1/CCL2 stimulation in monocytes.
Form	The isoform LH-iPLA2 is located at the membrane. The isoform SH-iPLA2 is cytoplasmic.

Images



Immunocytochemistry/ Immunofluorescence - Anti-Calcium-independent Phospholipase A2/PLA2G6 antibody (ab244247)

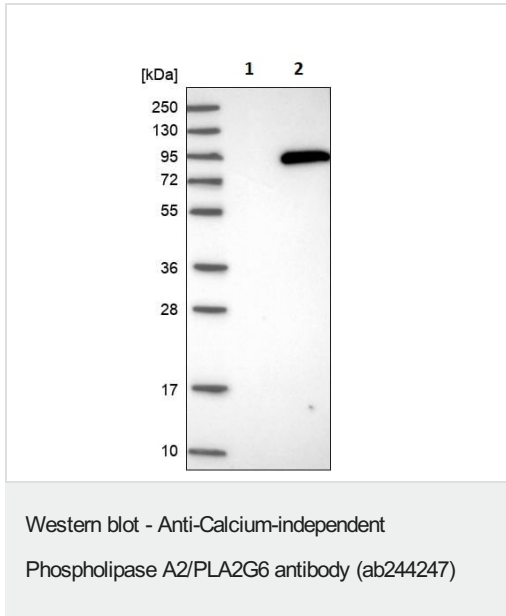
PFA fixed, Triton X-100 permeabilized A431 (Human epidermoid carcinoma cell line) cells labeling Calcium-independent Phospholipase A2/PLA2G6 using ab244247 at 4 $\mu\text{g/ml}$ (green) in ICC/IF.



Western blot - Anti-Calcium-independent Phospholipase A2/PLA2G6 antibody (ab244247)

Anti-Calcium-independent Phospholipase A2/PLA2G6 antibody (ab244247) at 0.4 $\mu\text{g/ml}$ + HEL (Human bone marrow erythroleukemia cell line) cell lysate

Predicted band size: 90 kDa



All lanes : Anti-Calcium-independent Phospholipase A2/PLA2G6 antibody (ab244247) at 0.4 µg/ml

Lane 1 : Vector only transfected HEK-293T (Human epithelial cell line from embryonic kidney transformed with large T antigen) cell lysate

Lane 2 : Calcium-independent Phospholipase A2 overexpression HEK-293T cell lysate

Predicted band size: 90 kDa

Please note: All products are "FOR RESEARCH USE ONLY. NOT FOR USE IN DIAGNOSTIC PROCEDURES"

Our Abpromise to you: Quality guaranteed and expert technical support

- Replacement or refund for products not performing as stated on the datasheet
- Valid for 12 months from date of delivery
- Response to your inquiry within 24 hours
- We provide support in Chinese, English, French, German, Japanese and Spanish
- Extensive multi-media technical resources to help you
- We investigate all quality concerns to ensure our products perform to the highest standards

If the product does not perform as described on this datasheet, we will offer a refund or replacement. For full details of the Abpromise, please visit <https://www.abcam.com/abpromise> or contact our technical team.

Terms and conditions

- Guarantee only valid for products bought direct from Abcam or one of our authorized distributors