


Product datasheet

Anti-Calcium Pump PMCA3 ATPase antibody ab223787

[5 Images](#)

Overview

Product name	Anti-Calcium Pump PMCA3 ATPase antibody
Description	Rabbit polyclonal to Calcium Pump PMCA3 ATPase
Host species	Rabbit
Tested applications	Suitable for: IHC-P, ICC
Species reactivity	Reacts with: Human Predicted to work with: Mouse, Rat 
Immunogen	Recombinant fragment corresponding to Human Calcium Pump PMCA3 ATPase aa 1100 to the C-terminus. Database link: Q16720 Run BLAST with Run BLAST with
Positive control	IHC-P: Human cerebellum and cerebral cortex tissue. ICC: A431 cells.
General notes	<p>The Life Science industry has been in the grips of a reproducibility crisis for a number of years. Abcam is leading the way in addressing this with our range of recombinant monoclonal antibodies and knockout edited cell lines for gold-standard validation. Please check that this product meets your needs before purchasing.</p> <p>If you have any questions, special requirements or concerns, please send us an inquiry and/or contact our Support team ahead of purchase. Recommended alternatives for this product can be found below, along with publications, customer reviews and Q&As</p>

Properties

Form	Liquid
Storage instructions	Shipped at 4°C. Store at +4°C short term (1-2 weeks). Upon delivery aliquot. Store at -20°C long term. Avoid freeze / thaw cycle.
Storage buffer	pH: 7.20 Preservative: 0.02% Sodium azide Constituents: 40% Glycerol (glycerin, glycerine), PBS
Purity	Immunogen affinity purified
Clonality	Polyclonal
Isotype	IgG

Applications

The Abpromise guarantee Our **Abpromise guarantee** covers the use of ab223787 in the following tested applications.

The application notes include recommended starting dilutions; optimal dilutions/concentrations should be determined by the end user.

Application	Abreviews	Notes
IHC-P		1/200 - 1/500. Perform heat mediated antigen retrieval with citrate buffer pH 6 before commencing with IHC staining protocol.
ICC		Use a concentration of 0.25 - 2 µg/ml. Fixation/Permeabilization: PFA/Triton X-100.

Target

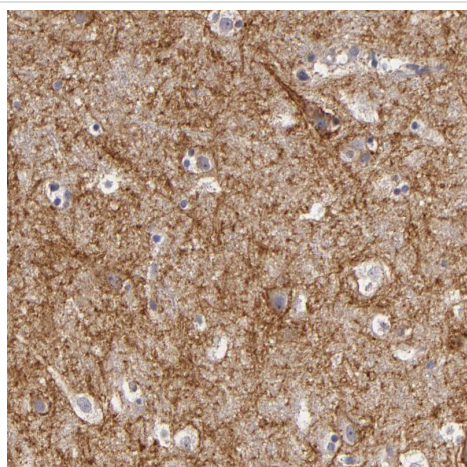
Relevance

Calcium Pump PMCA3 ATPase belongs to the family of P-type primary ion transport ATPases characterized by the formation of an aspartyl phosphate intermediate during the reaction cycle. These enzymes remove bivalent calcium ions from eukaryotic cells against very large concentration gradients and play a critical role in intracellular calcium homeostasis. The mammalian plasma membrane calcium ATPase isoforms are encoded by at least four separate genes and the diversity of these enzymes is further increased by alternative splicing of transcripts. The expression of different isoforms and splice variants is regulated in a developmental, tissue- and cell type-specific manner, suggesting that these pumps are functionally adapted to the physiological needs of particular cells and tissues. Calcium Pump PMCA3 ATPase is the plasma membrane calcium ATPase isoform 3.

Cellular localization

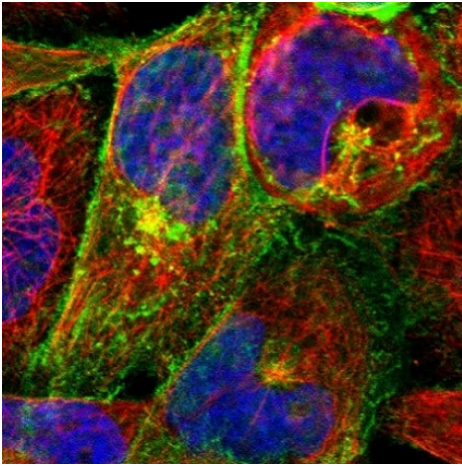
Cell membrane; Multi-pass membrane protein.

Images



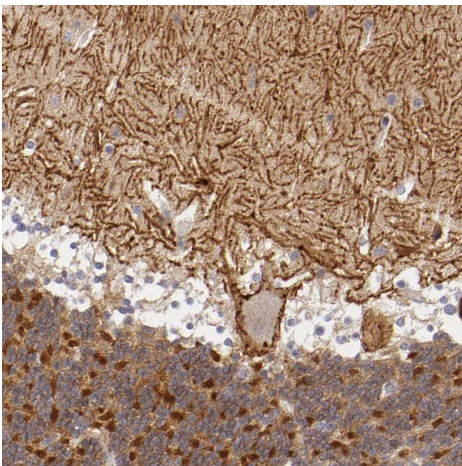
Paraffin-embedded human cerebral cortex tissue stained for Calcium Pump PMCA3 ATPase using ab223787 at 1/500 dilution in immunohistochemical analysis.

Immunohistochemistry (Formalin/PFA-fixed paraffin-embedded sections) - Anti-Calcium Pump PMCA3 ATPase antibody (ab223787)



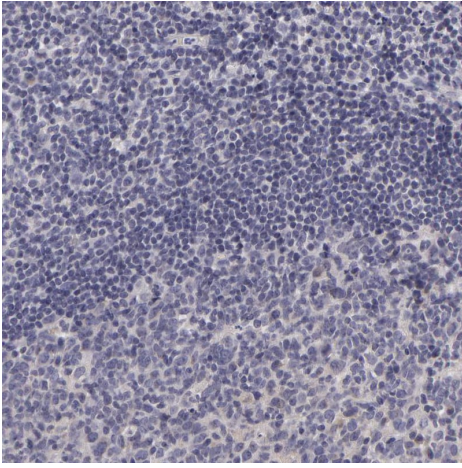
Immunocytochemistry - Anti-Calcium Pump PMCA3 ATPase antibody (ab223787)

PFA-fixed, Triton X-100 permeabilized A431 (human epidermoid carcinoma cell line) cells stained for Calcium Pump PMCA3 ATPase (green) using ab223787 at 4 $\mu\text{g}/\text{ml}$ in ICC.



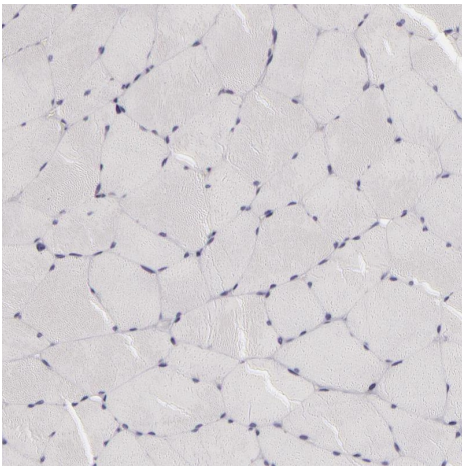
Immunohistochemistry (Formalin/PFA-fixed paraffin-embedded sections) - Anti-Calcium Pump PMCA3 ATPase antibody (ab223787)

Paraffin-embedded human cerebellum tissue stained for Calcium Pump PMCA3 ATPase using ab223787 at 1/500 dilution in immunohistochemical analysis.



Paraffin-embedded human lymph node tissue stained for Calcium Pump PMCA3 ATPase using ab223787 at 1/500 dilution in immunohistochemical analysis. No positivity as expected.

Immunohistochemistry (Formalin/PFA-fixed paraffin-embedded sections) - Anti-Calcium Pump PMCA3 ATPase antibody (ab223787)



Paraffin-embedded human skeletal muscle tissue stained for Calcium Pump PMCA3 ATPase using ab223787 at 1/500 dilution in immunohistochemical analysis. No positivity as expected.

Immunohistochemistry (Formalin/PFA-fixed paraffin-embedded sections) - Anti-Calcium Pump PMCA3 ATPase antibody (ab223787)

Please note: All products are "FOR RESEARCH USE ONLY. NOT FOR USE IN DIAGNOSTIC PROCEDURES"

Our Abpromise to you: Quality guaranteed and expert technical support

- Replacement or refund for products not performing as stated on the datasheet
- Valid for 12 months from date of delivery
- Response to your inquiry within 24 hours
- We provide support in Chinese, English, French, German, Japanese and Spanish
- Extensive multi-media technical resources to help you
- We investigate all quality concerns to ensure our products perform to the highest standards

If the product does not perform as described on this datasheet, we will offer a refund or replacement. For full details of the Abpromise,

please visit <https://www.abcam.com/abpromise> or contact our technical team.

Terms and conditions

- Guarantee only valid for products bought direct from Abcam or one of our authorized distributors