

Product datasheet

Anti-Calcium Pump PMCA4 ATPase antibody ab238158

3 Images

Overview

Product name	Anti-Calcium Pump PMCA4 ATPase antibody
Description	Rabbit polyclonal to Calcium Pump PMCA4 ATPase
Host species	Rabbit
Tested applications	Suitable for: ICC/IF, IHC-P
Species reactivity	Reacts with: Human
Immunogen	Recombinant fragment corresponding to Human Calcium Pump PMCA4 ATPase aa 281-345. Database link: P23634
Positive control	IHC-P: Human colon cancer and brain tissue. ICC/IF: HeLa cells.
General notes	<p>The Life Science industry has been in the grips of a reproducibility crisis for a number of years. Abcam is leading the way in addressing this with our range of recombinant monoclonal antibodies and knockout edited cell lines for gold-standard validation. Please check that this product meets your needs before purchasing.</p> <p>If you have any questions, special requirements or concerns, please send us an inquiry and/or contact our Support team ahead of purchase. Recommended alternatives for this product can be found below, along with publications, customer reviews and Q&As</p>

Properties

Form	Liquid
Storage instructions	Shipped at 4°C. Store at +4°C short term (1-2 weeks). Upon delivery aliquot. Store at -20°C long term. Avoid freeze / thaw cycle.
Storage buffer	pH: 7.40 Preservative: 0.03% Proclin 300 Constituents: PBS, 50% Glycerol (glycerin, glycerine)
Purity	Protein G purified
Purification notes	Purity >95%
Clonality	Polyclonal
Isotype	IgG

Applications

The Abpromise guarantee

Our **Abpromise guarantee** covers the use of ab238158 in the following tested applications.

The application notes include recommended starting dilutions; optimal dilutions/concentrations should be determined by the end user.

Application	Abreviews	Notes
ICC/IF		1/20 - 1/200.
IHC-P		1/20 - 1/200.

Target

Function

This magnesium-dependent enzyme catalyzes the hydrolysis of ATP coupled with the transport of calcium out of the cell.

Tissue specificity

Isoform XB is the most abundant isoform and is expressed ubiquitously. Isoforms containing segment Z have only been detected in heart, while isoforms containing segment a have been found in heart, stomach and brain cortex.

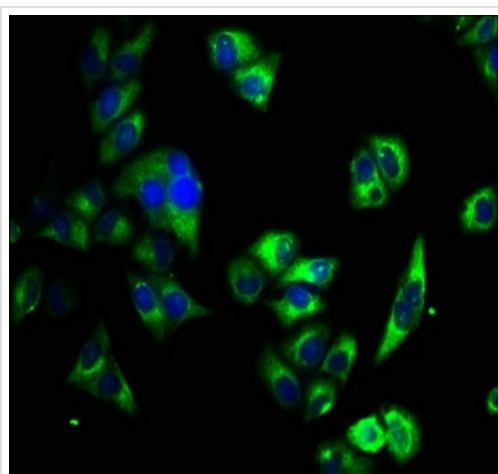
Sequence similarities

Belongs to the cation transport ATPase (P-type) (TC 3.A.3) family. Type IIb subfamily.

Cellular localization

Cell membrane.

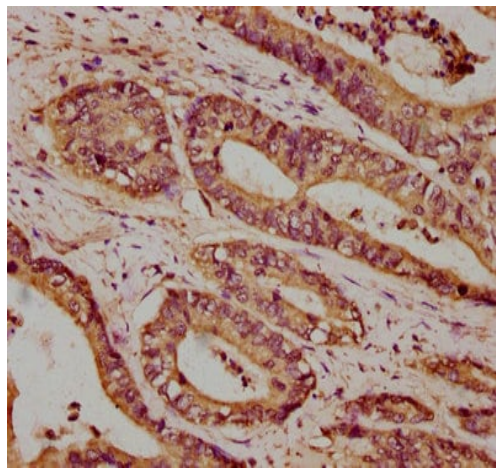
Images



Immunocytochemistry/ Immunofluorescence - Anti-Calcium Pump PMCA4 ATPase antibody (ab238158)

HeLa (Human epithelial cell line from cervix adenocarcinoma) cells stained for Calcium Pump PMCA4 ATPase (Green) using ab238158 at a 1/33 dilution in ICC/IF.

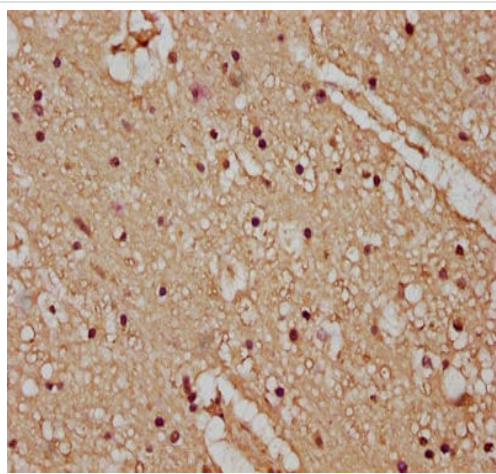
The cells were fixed in 4% formaldehyde, permeabilized using 0.2% Triton X-100 and blocked in 10% normal goat serum. The cells were then incubated with the primary antibody overnight at 4°C. Secondary used is an Alexa-Fluor[®]488-conjugated Goat Anti-Rabbit IgG (H+L). Counterstained with DAPI.



Immunohistochemistry (Formalin/PFA-fixed paraffin-embedded sections) - Anti-Calcium Pump PMCA4 ATPase antibody (ab238158)

Paraffin-embedded human colon cancer tissue stained for Calcium Pump PMCA4 ATPase with ab238158 at a 1/100 dilution in immunohistochemical analysis.

After dewaxing and hydration, antigen retrieval was mediated by high pressure in a citrate buffer (pH 6.0). Section was blocked with 10% normal goat serum 30 minutes at RT. Then primary antibody (1% BSA) was incubated at 4°C overnight. The primary is detected by a biotinylated secondary antibody and visualized using an HRP conjugated SP system.



Immunohistochemistry (Formalin/PFA-fixed paraffin-embedded sections) - Anti-Calcium Pump PMCA4 ATPase antibody (ab238158)

Paraffin-embedded human brain tissue stained for Calcium Pump PMCA4 ATPase with ab238158 at a 1/100 dilution in immunohistochemical analysis.

After dewaxing and hydration, antigen retrieval was mediated by high pressure in a citrate buffer (pH 6.0). Section was blocked with 10% normal goat serum 30 minutes at RT. Then primary antibody (1% BSA) was incubated at 4°C overnight. The primary is detected by a biotinylated secondary antibody and visualized using an HRP conjugated SP system.

Please note: All products are "FOR RESEARCH USE ONLY. NOT FOR USE IN DIAGNOSTIC PROCEDURES"

Our Abpromise to you: Quality guaranteed and expert technical support

- Replacement or refund for products not performing as stated on the datasheet
- Valid for 12 months from date of delivery

- Response to your inquiry within 24 hours
- We provide support in Chinese, English, French, German, Japanese and Spanish
- Extensive multi-media technical resources to help you
- We investigate all quality concerns to ensure our products perform to the highest standards

If the product does not perform as described on this datasheet, we will offer a refund or replacement. For full details of the Abpromise, please visit <https://www.abcam.com/abpromise> or contact our technical team.

Terms and conditions

- Guarantee only valid for products bought direct from Abcam or one of our authorized distributors