




Product datasheet

Anti-CALML3 antibody ab230240

3 Images

Overview

Product name	Anti-CALML3 antibody
Description	Rabbit polyclonal to CALML3
Host species	Rabbit
Tested applications	Suitable for: WB, IHC-P
Species reactivity	Reacts with: Human Predicted to work with: Rat 
Immunogen	Recombinant full length protein corresponding to Human CALML3 aa 1 to the C-terminus. Database link: P27482  Run BLAST with  Run BLAST with
Positive control	WB: A431 whole cell lysate. IHC-P: Human cervical cancer and skin tissues.
General notes	<p>The Life Science industry has been in the grips of a reproducibility crisis for a number of years. Abcam is leading the way in addressing this with our range of recombinant monoclonal antibodies and knockout edited cell lines for gold-standard validation. Please check that this product meets your needs before purchasing.</p> <p>If you have any questions, special requirements or concerns, please send us an inquiry and/or contact our Support team ahead of purchase. Recommended alternatives for this product can be found below, along with publications, customer reviews and Q&As</p>

Properties

Form	Liquid
Storage instructions	Shipped at 4°C. Store at +4°C short term (1-2 weeks). Upon delivery aliquot. Store at -20°C long term. Avoid freeze / thaw cycle.
Storage buffer	pH: 7.30 Preservative: 0.02% Sodium azide Constituents: PBS, 50% Glycerol (glycerin, glycerine)
Purity	Immunogen affinity purified
Clonality	Polyclonal
Isotype	IgG

Applications

The Abpromise guarantee

Our **Abpromise guarantee** covers the use of ab230240 in the following tested applications.

The application notes include recommended starting dilutions; optimal dilutions/concentrations should be determined by the end user.

Application	Abreviews	Notes
WB		1/1000 - 1/5000. Predicted molecular weight: 17 kDa.
IHC-P		1/20 - 1/200.

Target

Function

May be similar to that of authentic calmodulin and may actually compete with calmodulin by binding, with different affinities, to cellular substrates.

Tissue specificity

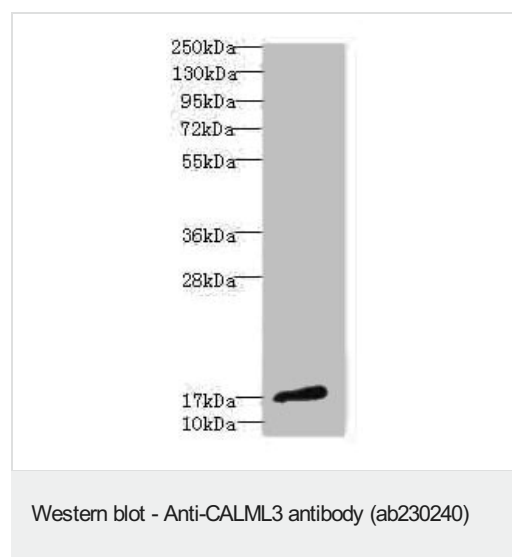
Expressed in normal mammary, prostate, cervical, and epidermal tissues. It is greatly reduced or undetectable in transformed cells.

Sequence similarities

Belongs to the calmodulin family.

Contains 4 EF-hand domains.

Images



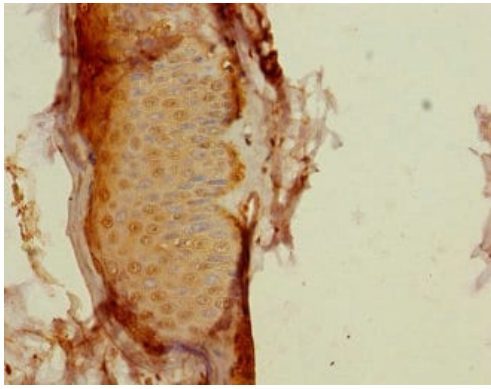
Anti-CALML3 antibody (ab230240) at 1/1000 dilution + A431
(human epidermoid carcinoma cell line) whole cell lysate

Secondary

Goat polyclonal to rabbit IgG at 1/10000 dilution

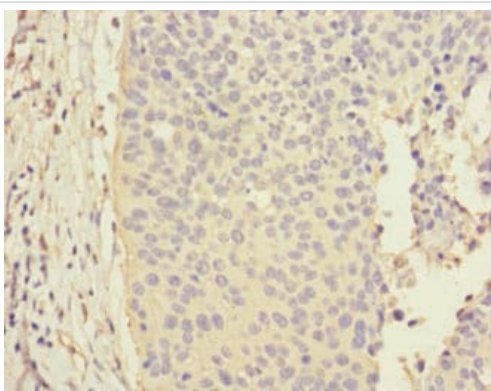
Predicted band size: 17 kDa

Observed band size: 17 kDa



Immunohistochemistry (Formalin/PFA-fixed paraffin-embedded sections) - Anti-CALML3 antibody (ab230240)

Paraffin-embedded human skin tissue stained for CALML3 using ab230240 at 1/100 dilution in immunohistochemical analysis.



Immunohistochemistry (Formalin/PFA-fixed paraffin-embedded sections) - Anti-CALML3 antibody (ab230240)

Paraffin-embedded human cervical cancer tissue stained for CALML3 using ab230240 at 1/100 dilution in immunohistochemical analysis.

Please note: All products are "FOR RESEARCH USE ONLY. NOT FOR USE IN DIAGNOSTIC PROCEDURES"

Our Abpromise to you: Quality guaranteed and expert technical support

- Replacement or refund for products not performing as stated on the datasheet
- Valid for 12 months from date of delivery
- Response to your inquiry within 24 hours
- We provide support in Chinese, English, French, German, Japanese and Spanish
- Extensive multi-media technical resources to help you
- We investigate all quality concerns to ensure our products perform to the highest standards

If the product does not perform as described on this datasheet, we will offer a refund or replacement. For full details of the Abpromise, please visit <https://www.abcam.com/abpromise> or contact our technical team.

Terms and conditions

- Guarantee only valid for products bought direct from Abcam or one of our authorized distributors