


Product datasheet

Anti-Calnexin antibody ab227310

[2 References](#) [7 Images](#)

Overview

Product name	Anti-Calnexin antibody
Description	Rabbit polyclonal to Calnexin
Host species	Rabbit
Tested applications	Suitable for: ICC/IF, IHC-P, WB
Species reactivity	Reacts with: Mouse, Rat, Human Predicted to work with: Chicken, Cow, Dog, Pig 
Immunogen	Recombinant fragment within Human Calnexin (internal sequence). The exact sequence is proprietary. Database link: P27824
Positive control	WB: HEK-293T, PC-12 and Rat2 whole cell extracts; HEK-293T, A431, HeLa and HepG2 whole cell lysate (ab7900); Mouse liver lysate. IHC-P: SW480 xenograft and human breast carcinoma tissues. ICC/IF: HeLa cells.
General notes	<p>The Life Science industry has been in the grips of a reproducibility crisis for a number of years. Abcam is leading the way in addressing this with our range of recombinant monoclonal antibodies and knockout edited cell lines for gold-standard validation. Please check that this product meets your needs before purchasing.</p> <p>If you have any questions, special requirements or concerns, please send us an inquiry and/or contact our Support team ahead of purchase. Recommended alternatives for this product can be found below, along with publications, customer reviews and Q&As</p>

Properties

Form	Liquid
Storage instructions	Shipped at 4°C. Store at +4°C short term (1-2 weeks). Upon delivery aliquot. Store at -20°C long term. Avoid freeze / thaw cycle.
Storage buffer	pH: 7.00 Preservative: 0.01% Thimerosal (merthiolate) Constituents: 1.21% Tris, 0.75% Glycine, 10% Glycerol (glycerin, glycerine)
Purity	Immunogen affinity purified
Clonality	Polyclonal
Isotype	IgG

Applications

The Abpromise guarantee

Our **Abpromise guarantee** covers the use of ab227310 in the following tested applications.

The application notes include recommended starting dilutions; optimal dilutions/concentrations should be determined by the end user.

Application	Abreviews	Notes
ICC/IF		1/100 - 1/1000.
IHC-P		1/100 - 1/1000.
WB		1/500 - 1/10000. Predicted molecular weight: 68 kDa.

Target

Function

Calcium-binding protein that interacts with newly synthesized glycoproteins in the endoplasmic reticulum. It may act in assisting protein assembly and/or in the retention within the ER of unassembled protein subunits. It seems to play a major role in the quality control apparatus of the ER by the retention of incorrectly folded proteins.

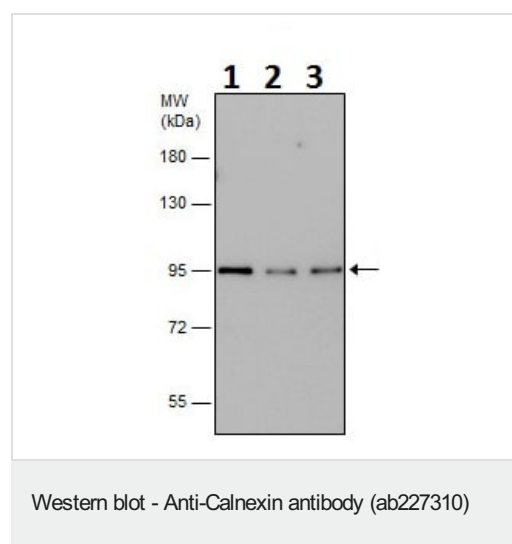
Sequence similarities

Belongs to the calreticulin family.

Cellular localization

Endoplasmic reticulum membrane. Melanosome. Identified by mass spectrometry in melanosome fractions from stage I to stage IV.

Images



All lanes : Anti-Calnexin antibody (ab227310) at 1/10000 dilution

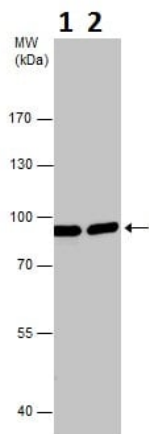
Lane 1 : Non-transfected HEK-293T (human epithelial cell line from embryonic kidney transformed with large T antigen) whole cell extract

Lanes 2-3 : Calnexin shRNA transfected HEK-293T whole cell extract

Lysates/proteins at 15 µg per lane.

Predicted band size: 68 kDa

7.5% SDS-PAGE gel.



Western blot - Anti-Calnexin antibody (ab227310)

All lanes : Anti-Calnexin antibody (ab227310) at 1/1000 dilution

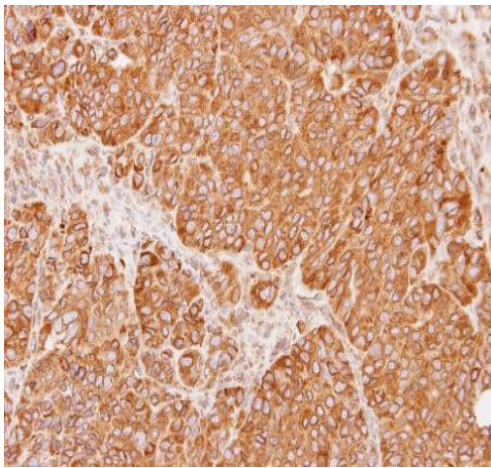
Lane 1 : PC-12 (rat adrenal gland pheochromocytoma cell line) whole cell extract

Lane 2 : Rat2 (rat fibroblast cell line) whole cell extract

Lysates/proteins at 30 µg per lane.

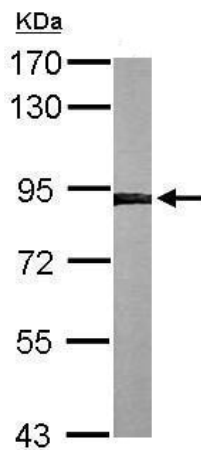
Predicted band size: 68 kDa

7.5% SDS-PAGE gel.



Immunohistochemistry (Formalin/PFA-fixed paraffin-embedded sections) - Anti-Calnexin antibody (ab227310)

Paraffin-embedded SW480 (human) xenograft tissue stained for Calnexin using ab227310 at 1/500 dilution in immunohistochemical analysis.

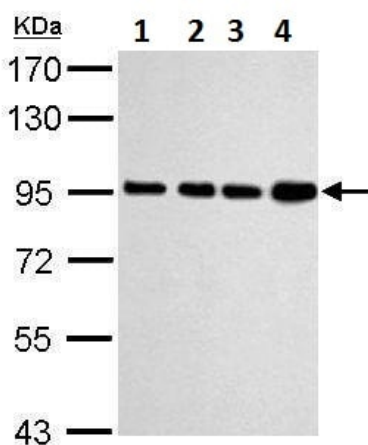


Western blot - Anti-Calnexin antibody (ab227310)

Anti-Calnexin antibody (ab227310) at 1/1000 dilution + Mouse liver lysate at 50 µg

Predicted band size: 68 kDa

7.5% SDS-PAGE gel.



Western blot - Anti-Calnexin antibody (ab227310)

All lanes : Anti-Calnexin antibody (ab227310) at 1/10000 dilution

Lane 1 : HEK-293T (human epithelial cell line from embryonic kidney transformed with large T antigen) whole cell lysate

Lane 2 : A431 (human epidermoid carcinoma cell line) whole cell lysate

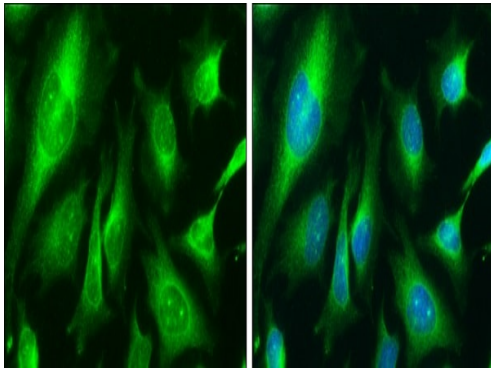
Lane 3 : HeLa (human epithelial cell line from cervix adenocarcinoma) whole cell lysate

Lane 4 : HepG2 (human liver hepatocellular carcinoma cell line) whole cell lysate

Lysates/proteins at 30 µg per lane.

Predicted band size: 68 kDa

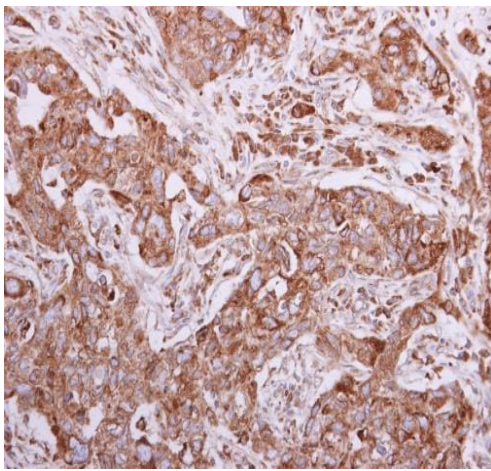
7.5% SDS-PAGE gel.



Immunocytochemistry/ Immunofluorescence - Anti-Calnexin antibody (ab227310)

Ice-cold methanol-fixed HeLa (human epithelial cell line from cervix adenocarcinoma) cells stained for Calnexin (green) using ab227310 at 1/200 dilution in ICC/IF.

Blue: Hoechst 33342 staining.



Immunohistochemistry (Formalin/PFA-fixed paraffin-embedded sections) - Anti-Calnexin antibody (ab227310)

Paraffin-embedded human breast carcinoma tissue stained for Calnexin using ab227310 at 1/500 dilution in immunohistochemical analysis.

Please note: All products are "FOR RESEARCH USE ONLY. NOT FOR USE IN DIAGNOSTIC PROCEDURES"

Our Abpromise to you: Quality guaranteed and expert technical support

- Replacement or refund for products not performing as stated on the datasheet
- Valid for 12 months from date of delivery
- Response to your inquiry within 24 hours
- We provide support in Chinese, English, French, German, Japanese and Spanish
- Extensive multi-media technical resources to help you
- We investigate all quality concerns to ensure our products perform to the highest standards

If the product does not perform as described on this datasheet, we will offer a refund or replacement. For full details of the Abpromise, please visit <https://www.abcam.com/abpromise> or contact our technical team.

Terms and conditions

- Guarantee only valid for products bought direct from Abcam or one of our authorized distributors