


Anti-Calnexin (phospho S583) antibody ab58503

[2 References](#) [1 Image](#)

Overview

Product name	Anti-Calnexin (phospho S583) antibody
Description	Rabbit polyclonal to Calnexin (phospho S583)
Host species	Rabbit
Specificity	ab58503 detects endogenous levels of Calnexin - ER membrane marker only when phosphorylated at serine 583. Recognizes ER membrane, mitochondria and cis-Golgi
Tested applications	Suitable for: WB
Species reactivity	Reacts with: Human Predicted to work with: Rat 
Immunogen	Synthetic peptide corresponding to Human Calnexin aa 500-600 (phospho S583). Database link: P27824
General notes	<p>The Life Science industry has been in the grips of a reproducibility crisis for a number of years. Abcam is leading the way in addressing this with our range of recombinant monoclonal antibodies and knockout edited cell lines for gold-standard validation. Please check that this product meets your needs before purchasing.</p> <p>If you have any questions, special requirements or concerns, please send us an inquiry and/or contact our Support team ahead of purchase. Recommended alternatives for this product can be found below, along with publications, customer reviews and Q&As</p>

Properties

Form	Liquid
Storage instructions	Shipped at 4°C. Store at -20°C. Stable for 12 months at -20°C.
Storage buffer	<p>pH: 7.40</p> <p>Preservative: 0.02% Sodium azide</p> <p>Constituents: PBS, 50% Glycerol (glycerin, glycerine), 0.87% Sodium chloride</p> <p>Without Mg+2 and Ca+2</p>
Purity	Immunogen affinity purified
Purification notes	ab58503 was affinity-purified from rabbit antiserum by affinity-chromatography using epitope-specific phosphopeptide. The antibody against non-phosphopeptide was removed by chromatography using non-phosphopeptide corresponding to the phosphorylation site.

Clonality	Polyclonal
Isotype	IgG

Applications

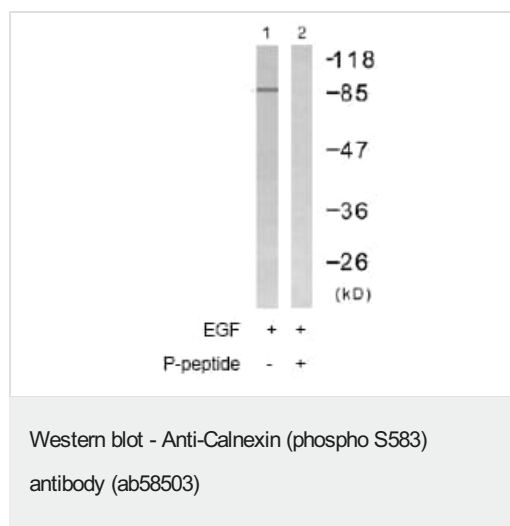
The Abpromise guarantee Our **Abpromise guarantee** covers the use of ab58503 in the following tested applications. The application notes include recommended starting dilutions; optimal dilutions/concentrations should be determined by the end user.

Application	Abreviews	Notes
WB		1/500 - 1/1000. Detects a band of approximately 90 kDa (predicted molecular weight: 90 kDa).

Target

Function	Calcium-binding protein that interacts with newly synthesized glycoproteins in the endoplasmic reticulum. It may act in assisting protein assembly and/or in the retention within the ER of unassembled protein subunits. It seems to play a major role in the quality control apparatus of the ER by the retention of incorrectly folded proteins.
Sequence similarities	Belongs to the calreticulin family.
Cellular localization	Endoplasmic reticulum membrane. Melanosome. Identified by mass spectrometry in melanosome fractions from stage I to stage IV.

Images



All lanes : Anti-Calnexin (phospho S583) antibody (ab58503) at 1/500 dilution

Lane 1 : HeLa cell extract treated with EGF (200ng/ml, 30mins)

Lane 2 : HeLa cell extract treated with EGF (200ng/ml, 30mins) with immunising peptide

Predicted band size: 90 kDa

Observed band size: 90 kDa

Please note: All products are "FOR RESEARCH USE ONLY. NOT FOR USE IN DIAGNOSTIC PROCEDURES"

Our Abpromise to you: Quality guaranteed and expert technical support

- Replacement or refund for products not performing as stated on the datasheet

- Valid for 12 months from date of delivery
- Response to your inquiry within 24 hours
- We provide support in Chinese, English, French, German, Japanese and Spanish
- Extensive multi-media technical resources to help you
- We investigate all quality concerns to ensure our products perform to the highest standards

If the product does not perform as described on this datasheet, we will offer a refund or replacement. For full details of the Abpromise, please visit <https://www.abcam.com/abpromise> or contact our technical team.

Terms and conditions

- Guarantee only valid for products bought direct from Abcam or one of our authorized distributors