


Product datasheet

Anti-Calretinin antibody ab702

★★★★☆ [4 Abreviews](#) [59 References](#) [1 Image](#)

Overview

Product name	Anti-Calretinin antibody
Description	Rabbit polyclonal to Calretinin
Host species	Rabbit
Tested applications	Suitable for: IHC-P
Species reactivity	Reacts with: Human Predicted to work with: Chicken, Cat, Dog, Xenopus laevis 
Immunogen	Full length protein corresponding to Calretinin.
General notes	<p>Contains a proprietary preservative that is not sodium azide or thimerosal.</p> <p>The Life Science industry has been in the grips of a reproducibility crisis for a number of years. Abcam is leading the way in addressing this with our range of recombinant monoclonal antibodies and knockout edited cell lines for gold-standard validation. Please check that this product meets your needs before purchasing.</p> <p>If you have any questions, special requirements or concerns, please send us an inquiry and/or contact our Support team ahead of purchase. Recommended alternatives for this product can be found below, along with publications, customer reviews and Q&As</p>

Properties

Form	Liquid
Storage instructions	Shipped at 4°C. Store at +4°C short term (1-2 weeks). Store at -20°C or -80°C. Avoid freeze / thaw cycle.
Storage buffer	Preservative: 0.09% Sodium azide Constituents: PBS, Carrier protein Van Gogh Yellow Diluent
Purity	Whole antiserum
Clonality	Polyclonal
Myeloma	unknown
Isotype	IgG

Applications

The Abpromise guarantee

Our **Abpromise guarantee** covers the use of ab702 in the following tested applications.

The application notes include recommended starting dilutions; optimal dilutions/concentrations should be determined by the end user.

Application	Abreviews	Notes
IHC-P	★ ★ ★ ★ ★ (1)	Use at an assay dependent concentration. Perform heat mediated antigen retrieval before commencing with IHC staining protocol. For an ABC system, dilute 1/50-1/100 and incubate for 30-60 minutes at RT.

Target

Function

Calretinin is a calcium-binding protein which is abundant in auditory neurons.

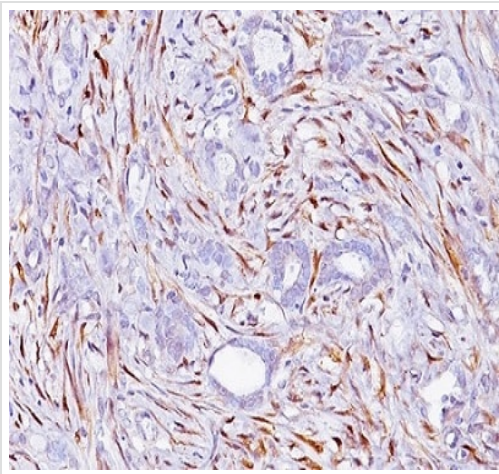
Tissue specificity

Brain.

Sequence similarities

Belongs to the calbindin family.
Contains 6 EF-hand domains.

Images



Paraffin embedded mesothelioma (human) stained for Calretinin with ab702 (1/100 dilution) in immunohistochemical analysis.

Immunohistochemistry (Formalin/PFA-fixed paraffin-embedded sections) - Anti-Calretinin antibody (ab702)

Please note: All products are "FOR RESEARCH USE ONLY. NOT FOR USE IN DIAGNOSTIC PROCEDURES"

Our Abpromise to you: Quality guaranteed and expert technical support

- Replacement or refund for products not performing as stated on the datasheet
- Valid for 12 months from date of delivery

- Response to your inquiry within 24 hours
- We provide support in Chinese, English, French, German, Japanese and Spanish
- Extensive multi-media technical resources to help you
- We investigate all quality concerns to ensure our products perform to the highest standards

If the product does not perform as described on this datasheet, we will offer a refund or replacement. For full details of the Abpromise, please visit <https://www.abcam.com/abpromise> or contact our technical team.

Terms and conditions

- Guarantee only valid for products bought direct from Abcam or one of our authorized distributors